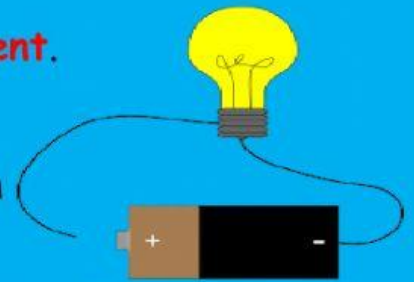


Simple Circuits

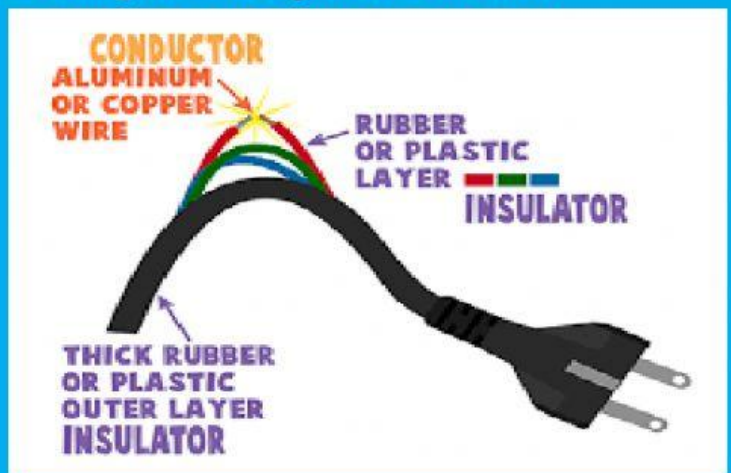
A flow of electric charges is called an **electric current**.

A wire, a bulb and a battery are needed to make a path in which negative charges could flow. This path is called a **circuit**.

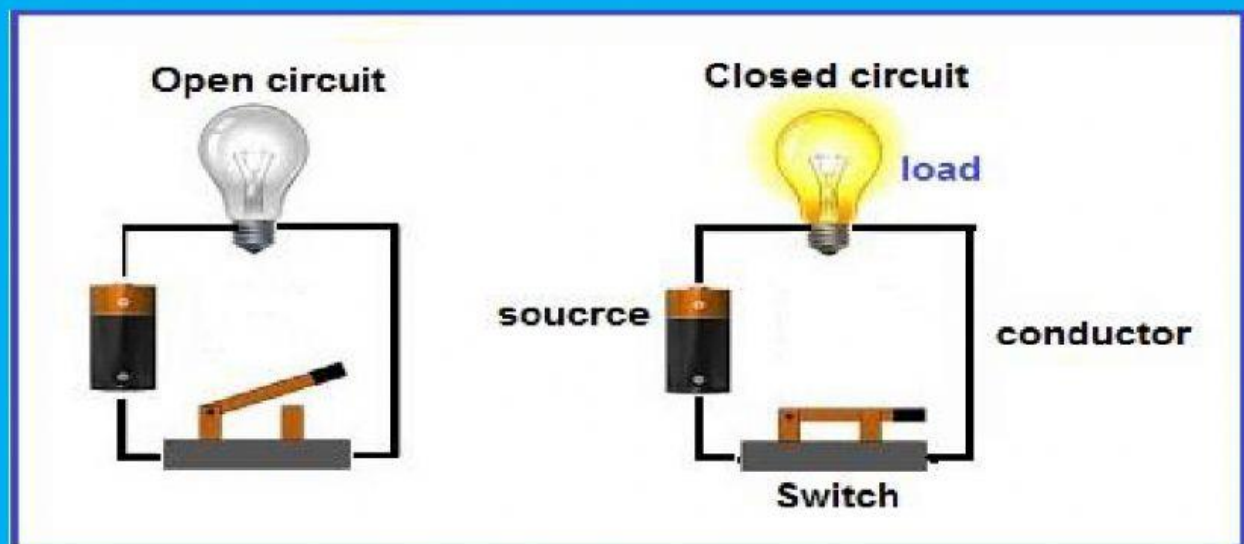


The **battery** is an electric circuit cell which supplies energy to move charges through the circuit.

The electric wire is made of metal, mainly copper. This wire is the **conductor** that allows current to pass through it easily. The plastic covering the wire is called an **insulator**. Insulators do not allow current to pass through them easily.



A **switch** is used to turn an electric current off or on. When the switch is on, the path is complete. Then the light bulb comes on. (Closed circuit). When the switch is off, the path is broken (open circuit). The light bulb would be off.



2. Green 2021