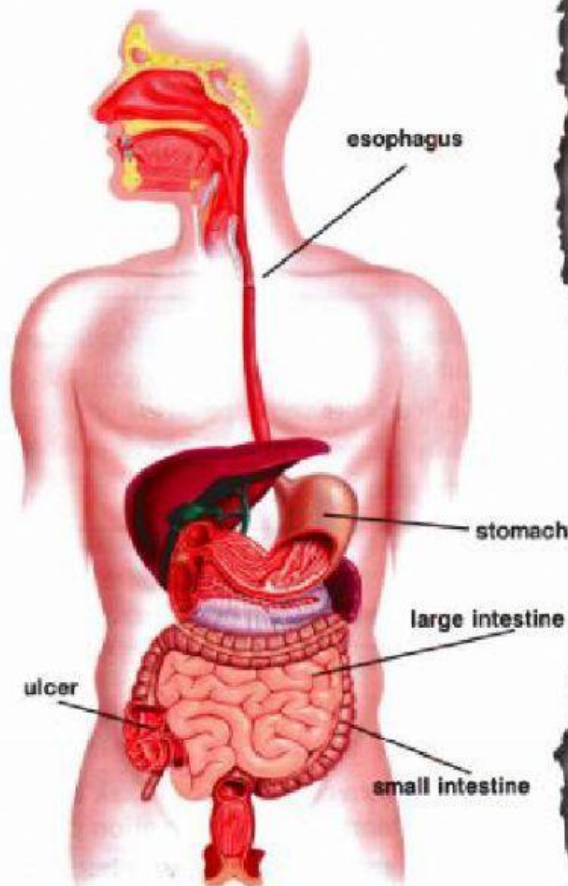




DIGESTIVE SYSTEM (12th grade)

ABDOMINAL PAINS



Dear Dr. Diane:

I've had persistent pains for two days. At first there was a dull stomach pain. Lately the pain has become sharper. I'm a little stressed out because of family and work. Friends say it might be an **ulcer**. Is it that serious?

- Painful in PA

Get ready!

1 Before you read the passage, talk about these questions.

- 1 What are the main parts of the digestive system?
- 2 What are possible problems that can occur in the digestive system?

Reading

2 Read the advice column on abdominal pains. Then, choose the correct answers.

- 1 What does the man write to the doctor about?
 - A His ulcer will not heal.
 - B His esophagus is burning.
 - C He has increasing stomach pain.
 - D He is concerned about a colonoscopy.
- 2 Which of the following is NOT a possible cause of the problem?
 - A an ulcer
 - B appendicitis
 - C an irritated colon
 - D an inflamed small intestine
- 3 Why does the doctor say pain in the stomach should be taken seriously?
 - A The problem could spread.
 - B The pain could have several causes.
 - C The man could die from the condition.
 - D The treatment could take weeks to work.

Vocabulary

Dear Painful in PA:

Always take persistent pains seriously. Persistent pain could mean an ulcer. Pain between the heart and stomach might mean an **esophagus** problem. Pain lower in the abdomen could mean **appendicitis**. The appendix is between the **small intestine** and **large intestine**. It sometimes becomes inflamed, and causes real problems. It's part of the **digestive system**. But its function is unknown and it can be removed without any consequences.

Your doctor may want to perform a **colonoscopy**. That will check your **colon** and intestines for any serious problems.

- Dr. Diane

3 Match the words (1-5) with the definitions (A-E).

- 1 — appendicitis 4 — stomach
2 — colonoscopy 5 — digestive system
3 — esophagus

- A a pouch-like organ between the esophagus and small intestine.
B a condition where the appendix becomes inflamed
C a muscular tube connecting the mouth to the stomach
D a medical procedure which examines the inside of the colon
E a system of organs which processes food, nutrients, and waste

20

4 Read the sentence pair. Choose where the words best fit the blanks.

1 small intestine / large intestine

- A The _____ removes excess water from food as it is turned into waste.
B Nutrients are absorbed from food as it passes through the _____.

2 ulcer / colon

- A Jane was worried that her illness had left her stomach susceptible to a(n) _____.
B Much of the bacteria found in the _____ exists harmlessly in the body.

Keep Up
The
Good
Work

