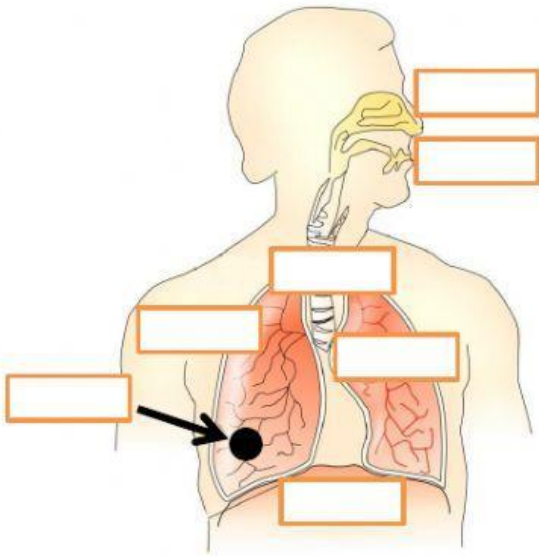


RESPIRATORY SYSTEM



- MOUTH
- NOSE
- TRACHEA
- BRONCHI
- ALVEOLI
- DIAPHRAGM
- LUNGS

Join the paragraph with the right part of the respiratory system.

Two parts of our face.

Alveoli.

It is a long tube.

Bronchi.

Two smaller tubes.

Trachea.

Air sacks.

Diaphragm.

Two organs in our chest.

Mouth and nose.

It is a muscle in our abdomen.

Lungs.