

SERENDIPITY

ENGLISH, THE MOST FORTUNATE
DISCOVERY

OPPORTUNITIES
English!

THIS IS



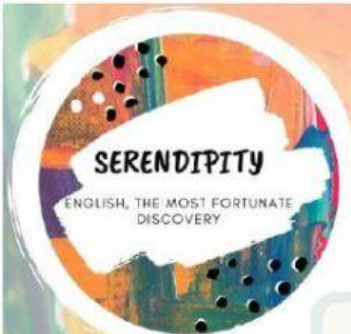
Social English

Getting lost

Visit the following website; [Visit Tate Modern](#)



- What is the Tate Modern?
- Where is it?



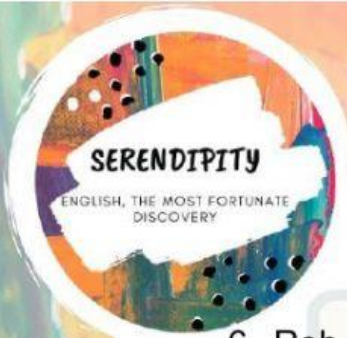
A FREE MORNING

a. Rob and Jenny are planning what to do on their free morning. Watch or listen once. What is the problem?



b. Complete the sentences with a word, a name, or a number.

1. Rob suggests that they go
2. He says that they can bikes.
3. phones
4. Rob needs to interview an
5. Rob asks if he can do the interview on

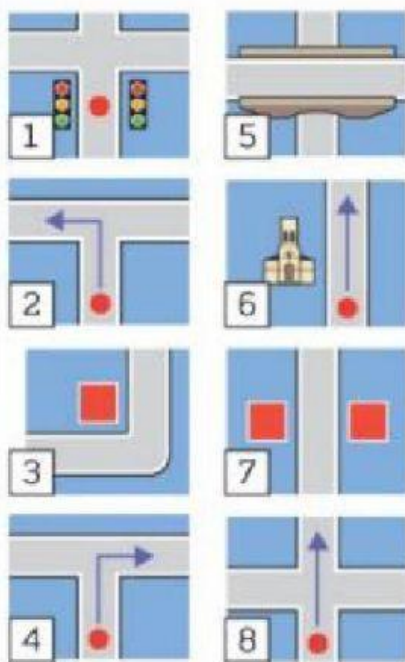


6. Rob and Jenny arrange to meet at o'clock outside the Tate Modern.



VOCABULARY: DIRECTIONS

a. Match the words and pictures.



on the corner

at the traffic lights

a bridge

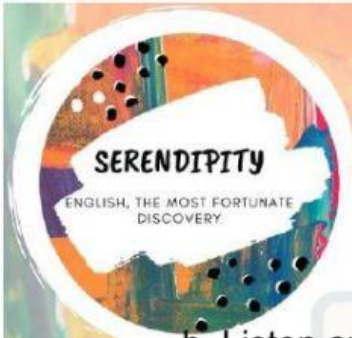
opposite

turn left

turn right

go straight on

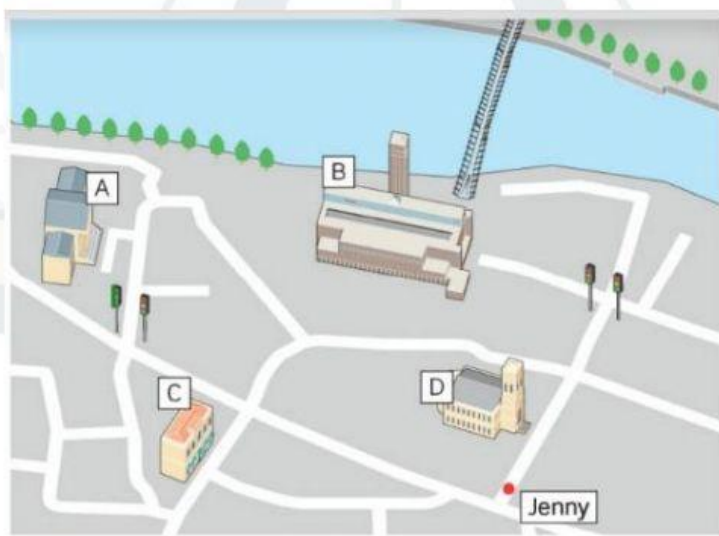
go past (the church)

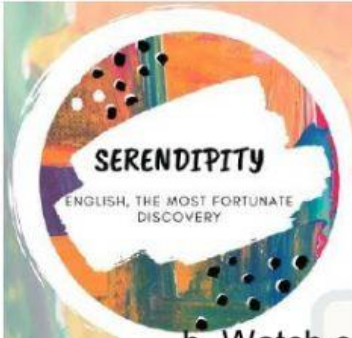


b. Listen and check. 3.65

ASKING THE WAY

a. Jenny is trying to find the Tate Modern. Is it A, B, C or D?
3.66

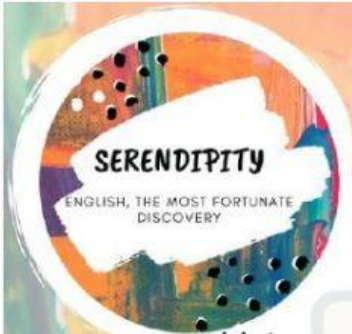




b. Watch or listen again. Complete the missing phrases;



-
- Sorry, I don't live here.
- Excuse me, Is the Tate Modern near here?.....
- The Tate Modern? It's near here, but I don't know exactly where. Sorry.
-
- Excuse me. Can you tell me the way to the Tate Modern, please?
- Yes, of course. Go straight on. Go past the church, then turn left at the traffic lights. And it's at the end of the street.
-
- Yes, go straight on, Go past the church, then turn left at the traffic lights. And it's at the end of the street. You can't miss it!
-



c. Listen and repeat the phrases. Copy the rhythm.
3.67



Can you...? or Could you...?

Can you tell me the way to the Tate Modern?

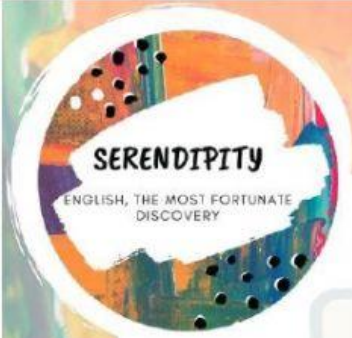
Could you say that again, please?

We can use *Can you...?* Or *Could you...?* when we want to ask another person to do something.

Could you...? is more polite.

JENNY AND ROB GO SIGHTSEEING

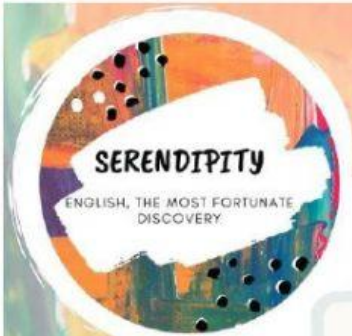




a. Watch to Jenny and Rob; Mark the sentences True or False. Say why the F are false.

1. The Millennium Bridge is for cars and people.
2. It was the first new bridge over the Thames for 100 years.
3. Rob interviewed the engineer last year.
4. Jenny doesn't like Shakespeare.
5. Daniel phones and invites Jenny to dinner.
6. Jenny accepts the invitation.
7. There's a gift shop on the top floor of the Tate Modern.
8. The Tate Modern was a power station until 1981.

True	False



b. Look at the Social English Phrases. Who says them?



Social English phrases

What a view!

What would you like to visit?

What is there to see?

We could go to the Globe Theatre.

Would you like to meet for lunch?

That's really nice of you.

Maybe another time?

Yes, of course.

c. Listen and check. Do you know what they are in your language?

3.69

d. Watch or listen again and repeat the phrases.