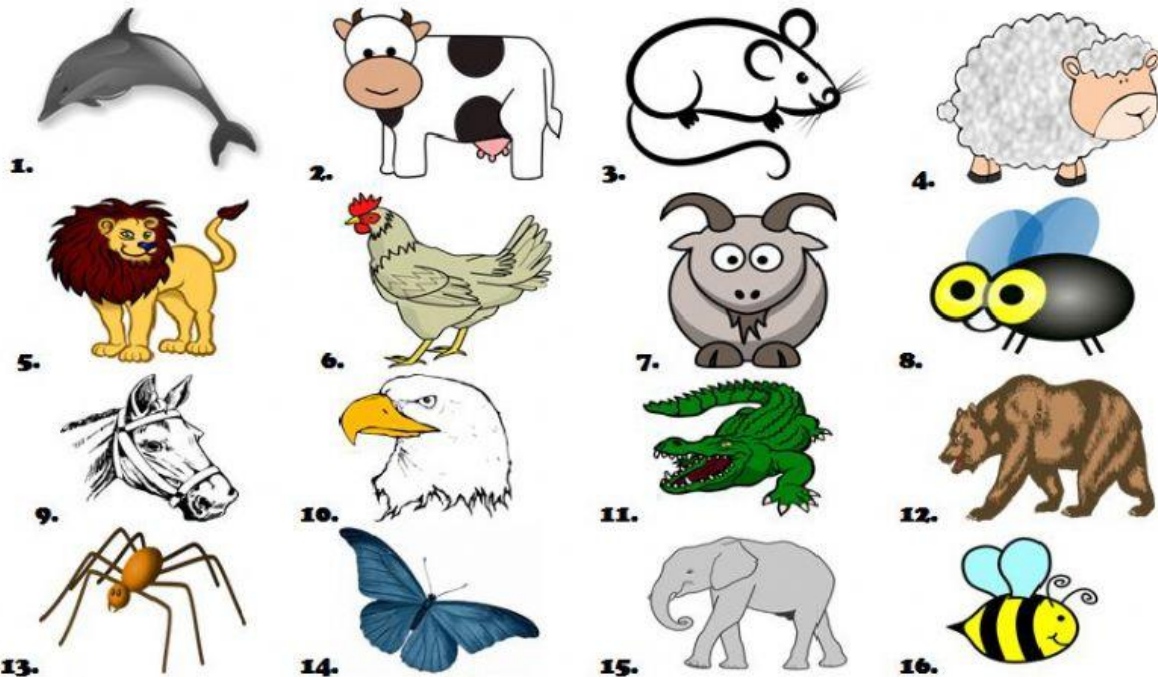




UNIT 1- ANIMALS

TEST PRACTICE 2

1. Tick the invertebrates



2. Read and match

- Have a thin exoskeleton.
Their body is divided in three parts.
- Have long, soft body.
- Have a soft, muscular body.
Sometimes they have a shell.
- Worms
- Molluscs
- Arthropods

3. Choose the correct answer.

a) MUSSEL 

b) SPIDER 

c) EARTHWORM 

d) BEE 

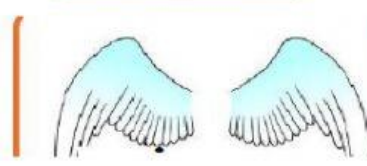
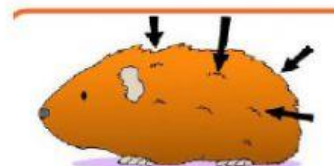
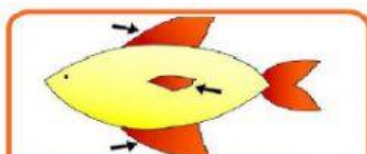
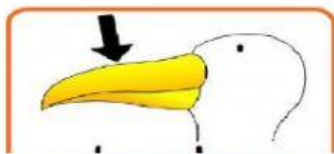
e) OYSTER 

f) OCTOPUS 

4. Read and choose TRUE or FALSE.

- Birds are cold-blooded. ☐ TRUE ☐ FALSE
- Mammals are viviparous. ☐ TRUE ☐ FALSE
- Arthropods have an exoskeleton. ☐ TRUE ☐ FALSE
- Fish breathe with lungs. ☐ TRUE ☐ FALSE
- Amphibians are viviparous. ☐ TRUE ☐ FALSE
- Reptiles lay soft eggs. ☐ TRUE ☐ FALSE
- Molluscs have a soft, muscular body. ☐ TRUE ☐ FALSE
- Arthropods have head, thorax and abdomen. ☐ TRUE ☐ FALSE
- Birds have fins. ☐ TRUE ☐ FALSE

5. Drag and drop.



FUR

SCALES

FINS

WINGS

FEATHERS

BEAK

6. Read and complete the text.

Most animals in the world are _____, which means that they don't have a _____.
Some invertebrates have a soft body, but others have an _____. This is a thin skeleton
outside their bodies which protects them. Other invertebrates have a _____, like snails and
mussels. All invertebrates are _____, they are born from eggs.

backbone

exoskeleton

invertebrates

shell

oviparous