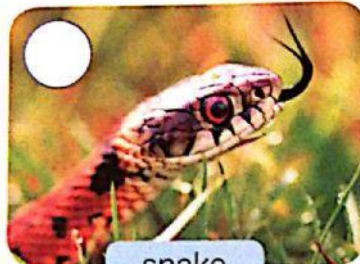


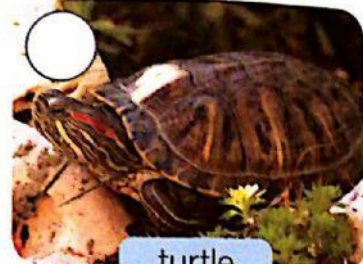
1. Write **V** if the animal is a vertebrate and **I** if it is an invertebrate.



crab



snake



turtle



frog



caterpillar



rabbit

2. Match the characteristics with the vertebrates.

Mammals

Most of them can fly.

Reptiles

They have mammary glands.

Birds

They have scales.

Amphibians

They have thin, moist skin.

3. Write **T** for true and **F** for false.

- _____ Snakes have a backbone.
- _____ Amphibians are invertebrates.
- _____ Animals that have an internal skeleton are called invertebrates.
- _____ A mammal's body is divided into a head, an abdomen and limbs.
- _____ Insects are invertebrates.