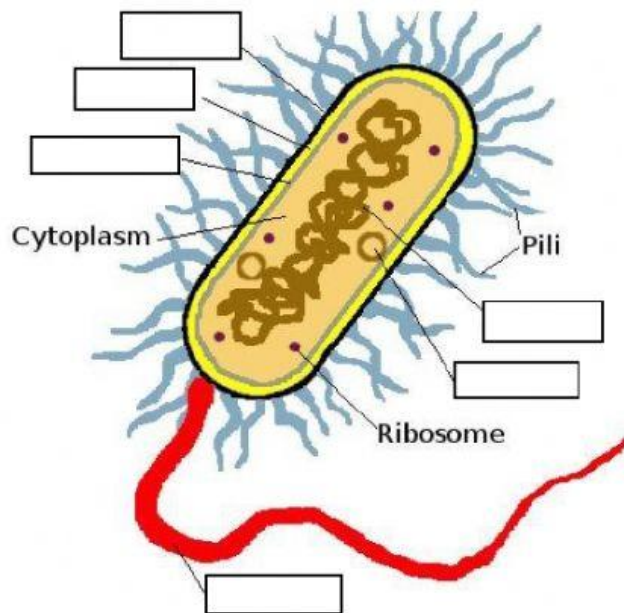


Labeling diagrams

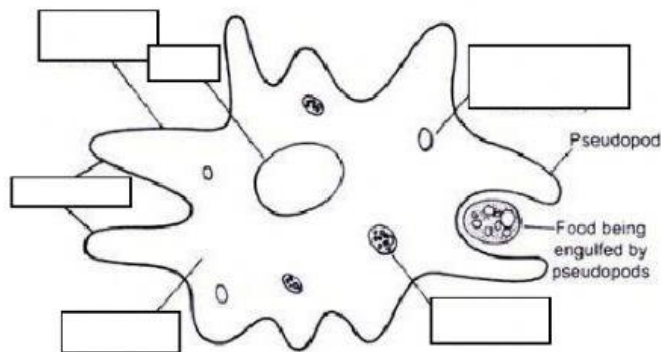
Look at the following diagrams of microorganisms and label them by dragging the correct labels from their boxes:

1) Bacteria:



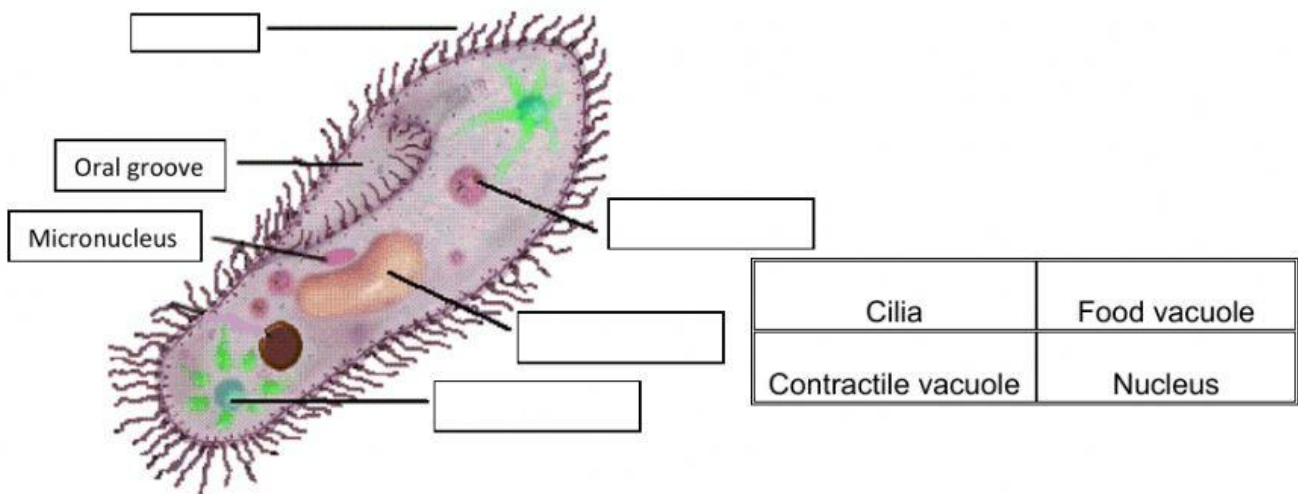
Cell wall	DNA/Nucleoid	Flagellum
Plasmid/DNA loop	Cell membrane	Slime capsule

2) Amoeba:

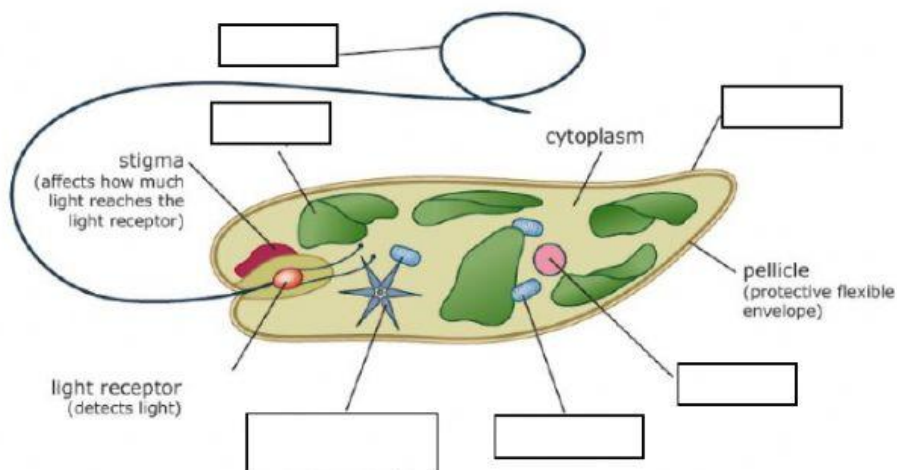


Food vacuole	Pseudopods	Nucleus
Contractile vacuole	Cell membrane	Cytoplasm

3) Paramecium:



4) Euglena:



Chloroplast	Mitochondria	Nucleus
Contractile vacuole	Cell membrane	Flagellum