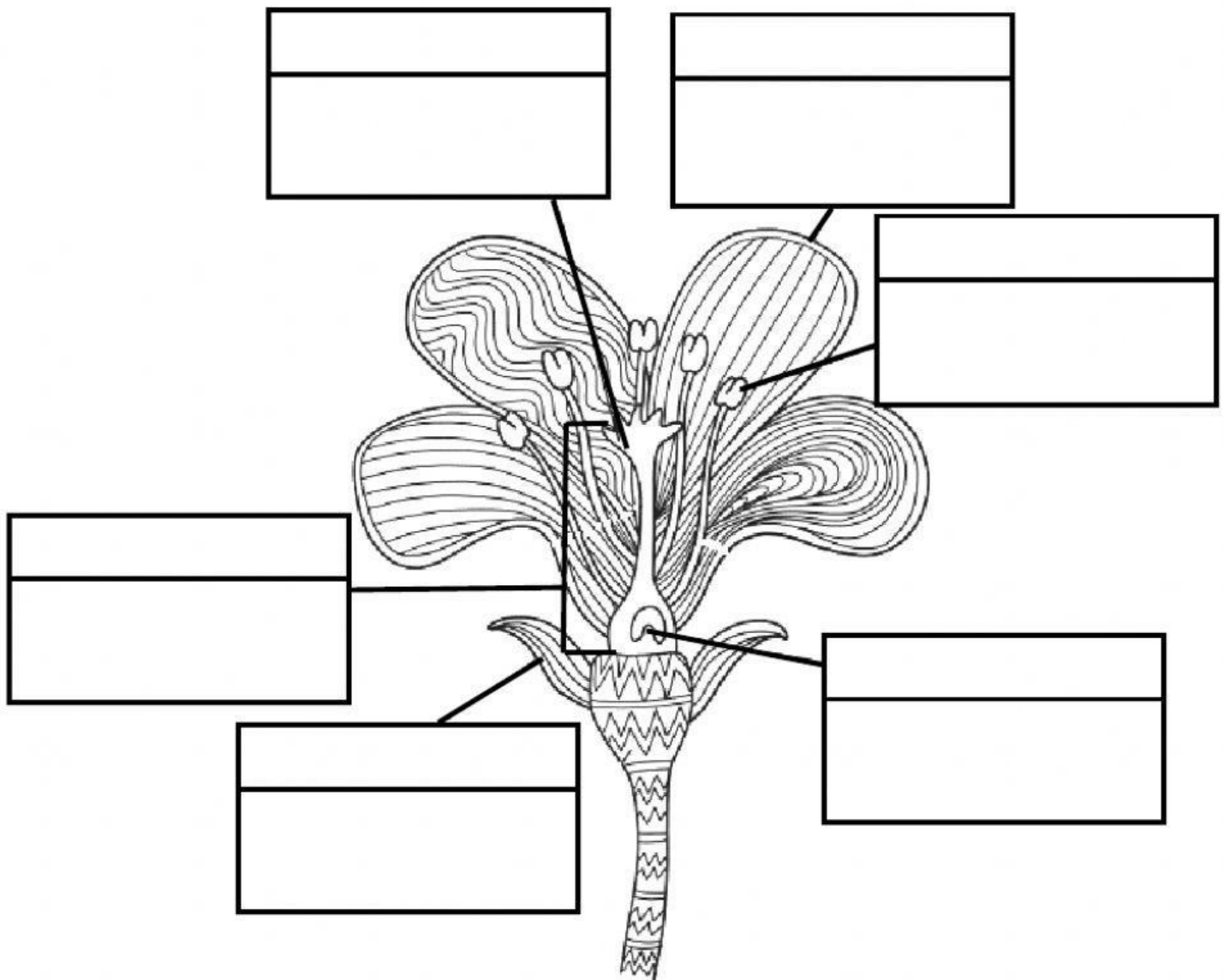


Reproduction of angiosperms

Parts of a flower and their functions



Attract insects to the flower

Is the female reproductive organ.

Are the male reproductive organs. It produces pollen.

Receives the pollen

Where the seeds develop

Small green leaves which protect the flower

PETALS

SEPAL

CARPEL

STAMENS

STIGMA

OVARY

