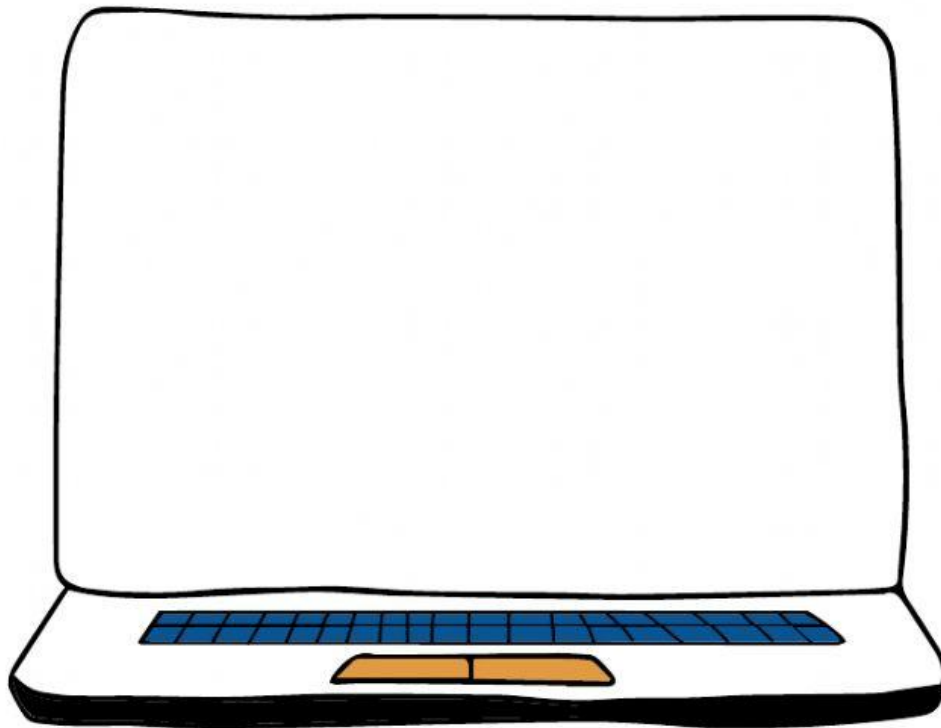


THE PERCENT PROPORTION



$$\frac{\text{part}}{\text{whole}} = \frac{\%}{100}$$

percent: always has a "%" or the word "percent" after it

whole: always comes right after the percent "percent of the whole"

part: the leftover number (if there are no more numbers, this is your variable.)

For each problem, set up and solve a Percent Proportion.

What percent of 125 is 15?

$$\frac{\quad}{\quad} = \frac{\quad}{100}$$

85 is 40% of what amount?

$$\frac{\quad}{\quad} = \frac{\quad}{100}$$

What is 18% of 20?

$$\frac{\quad}{\quad} = \frac{\quad}{100}$$

36 out of 60 is what percent?

$$\frac{\quad}{\quad} = \frac{\quad}{100}$$