

Someone You Loved
Lewis Capaldi

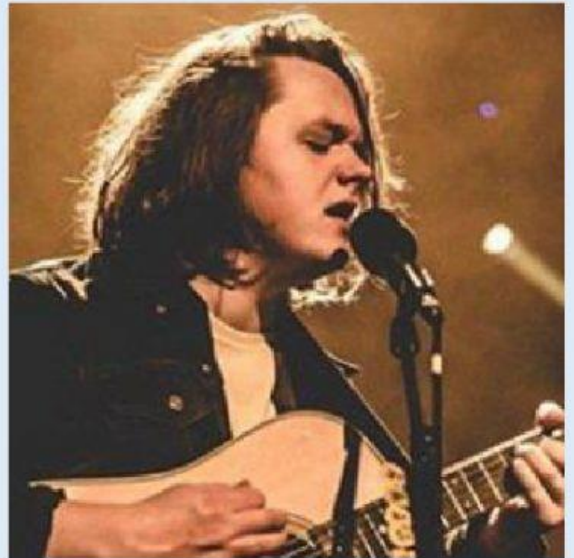
Listen to the song. Notice the infinitives and infinitive phrases that are used as adjectives. They are in bold.

I'm going under, and this time I fear there's no one _____
This all or nothing really got a way of driving me crazy
I need somebody _____
Somebody _____
Somebody _____
Somebody _____
It's easy to say¹
But it's never the same
I guess I kind of² liked the way you numbed all the pain
Now the day bleeds
Into nightfall
And you're not here
To get me through it all
I let my guard down
And then you pulled the rug
I was getting kind of used to being someone you loved
I'm going under, and this time I fear there's no one to turn to
This all or nothing way of loving got me sleeping without you
Now, I need somebody _____
Somebody _____
Somebody _____
Just to know how it feels
It's easy to say but it's never the same
I guess I kind of liked the way you helped me escape

Now the day bleeds
Into nightfall
And you're not here
To get me through it all
I let my guard down
And then you pulled the rug
I was getting kind of used to being someone you loved

And I tend to close my eyes when it hurts sometimes
I fall into your arms
I'll be safe in your sound 'til I come back around

For now the day bleeds
Into nightfall
And you're not here
To get me through it all
I let my guard down
And then you pulled the rug
I was getting kind of used to being someone you loved



¹ The infinitive *to say* is used as an adverb. It modifies the adjective *easy*.

² *Kind of* is often pronounced "kinda" in informal speech.