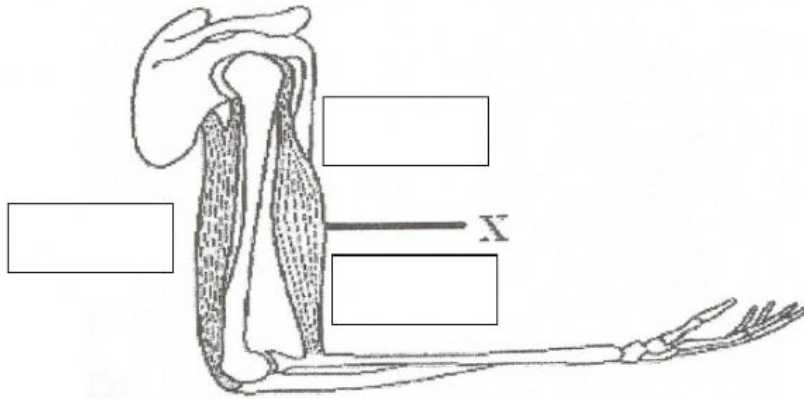


The diagram represents some of the bones and muscles in the human arm.



- (a) On the diagram, label the **humerus**, the **biceps** and the **triceps**. [3]
 (b) Muscle X is said to be voluntary muscle. What does this mean?

 _____ [1]

- (c) Name the kind of tissue that:
 I. Attaches a muscles to a bone

 II. holds the ends of two bones together at a joint
 _____ [2]

- (d) Explain what is meant by:
 I. a fracture

 II. a dislocation
 _____ [2]

- (e) Complete the following table about joints

Name of Joint	Type of Joint
Shoulder	
elbow	

Total marks [10]