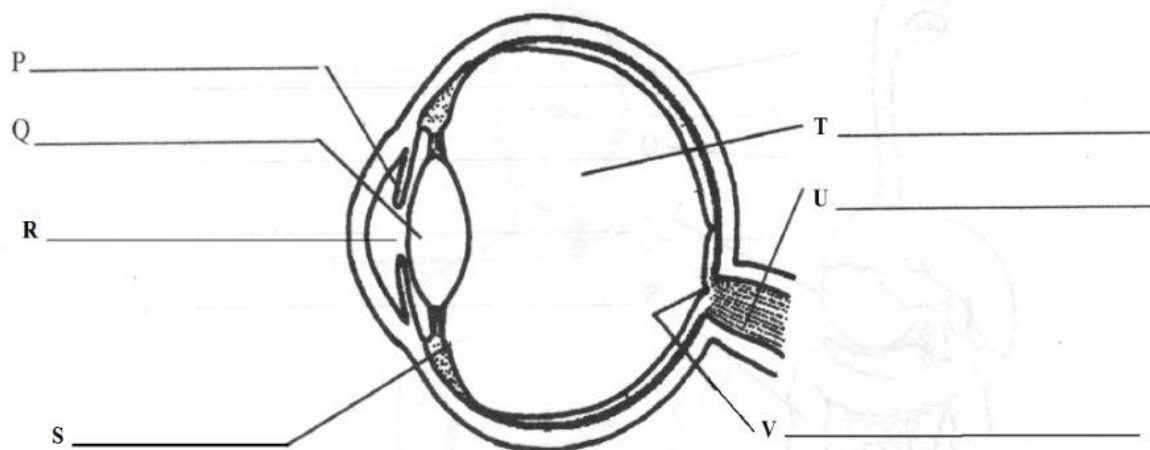


Worksheet: The Eye

1. Label the following diagram of the eye. Type your answer into the box space provided.

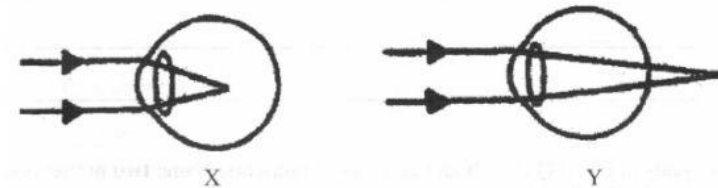


2. Part P gives the eye its color. What is another function of the part labeled P? [1]

3. What kind of tissue is part P made of? _____ [1]
4. What is the function of the part labeled U? [1]

5. Name the eye defect that affects the structure labeled Q? [1]

6. Diagrams X and Y below show two eye defects. Choose your answers from the drop-down options.



- (i) Identify the eye defect shown in:

Diagram X _____

Diagram Y _____

- (ii) Name the type of lens which would correct the eye defect shown in:

Diagram X _____

Diagram Y _____

7. Below are the steps to how we see. Place the steps in the correct order by dragging them to the correct position.

The lens focuses the light rays on to the retina.	The cells of the retina change the light energy into an electrical impulse	Light bounces of an object and are reflected to the eye.
Light rays pass through the cornea.	The light rays pass through the pupil.	The cornea bends the light rays towards the pupil.
Light rays pass through the lens.	The brain interprets the impulse - an image has been seen.	The optic nerve carries messages to the brain.

Step 1		Step 6	
Step 2		Step 7	
Step 3		Step 8	
Step 4		Step 9	
Step 5			

8. Place the following parts of the eye in the correct position to show the pathway light takes as it travels through the eye.

