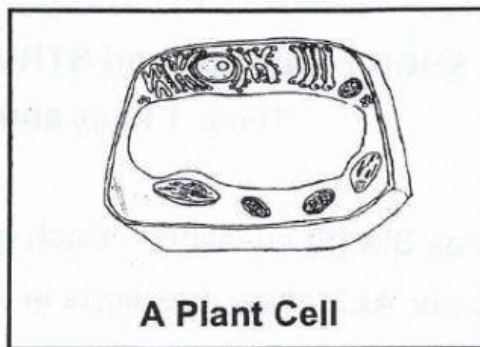
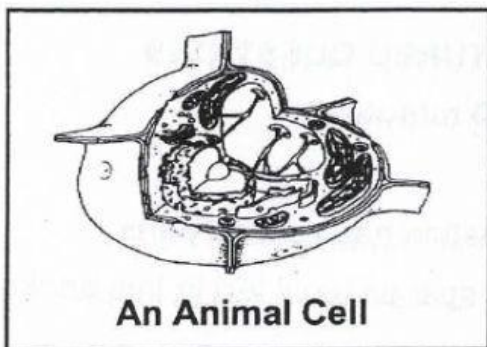


## 1. CELLS

The diagrams show two different types of cells.



(a). What is a cell?

---

---

---

[2]

(b). 'Cells must work together to perform basic life processes which helps to keep organisms alive.'

Name **TWO** life processes of cells.

(i) \_\_\_\_\_ [1]

(ii) \_\_\_\_\_ [1]

(c). 'All cells have a cell membrane.'

Name **TWO** materials that can pass through the cell membrane.

(i) \_\_\_\_\_ [1]

(ii) \_\_\_\_\_ [1]

[GO ON]

(d). 'All cells have a nucleus.'

Why is the nucleus an important part of the cell?

---

---

[1]

(e) . (i). What is the name of the green substance that is found in the cells of green plants?

---

---

[1]

(e) (ii). Explain what would happen if the green substance you named in (e) (i) was missing from the cells of a green plant?

---

---

---

---

[2]

**[TOTAL MARKS 10]**

**[GO ON]**