

C. letakkan grafik-grafik dari persamaan eksponen dan persamaan logaritma yang sesuai !



$$y = f(x) = 2^x \quad (x \in \mathbb{R})$$



$$y = f(x) = \left(\frac{1}{2}\right)^x \quad (x \in \mathbb{R})$$



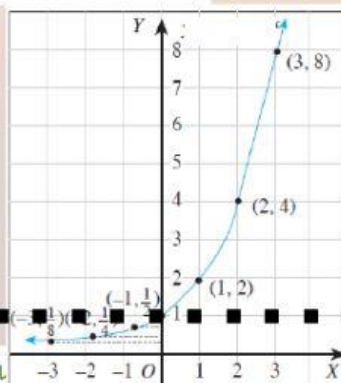
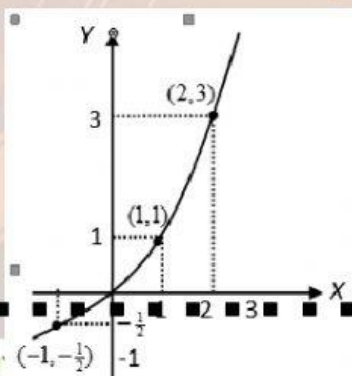
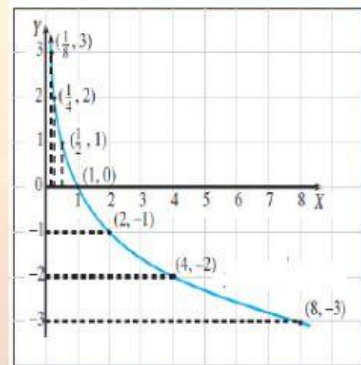
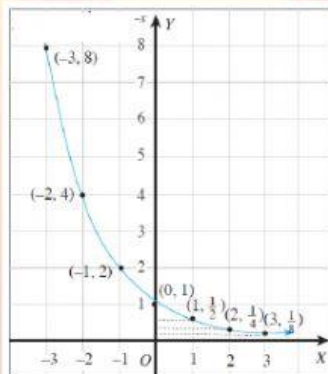
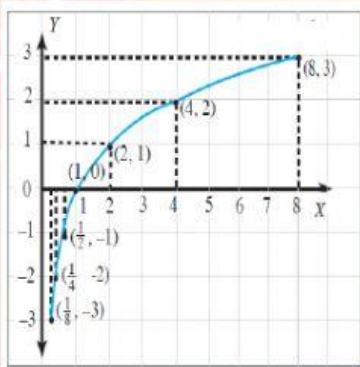
$$y = f(x) = {}^2\log x \quad (x > 0 \text{ dan } x \in \mathbb{R})$$



$$y = f(x) = \frac{1}{2} \log x \quad (x > 0 \text{ dan } x \in \mathbb{R})$$



$$y = f(x) = 2^x - 1$$



D. Hubungkan setiap kotak di sebelah kiri dengan pasangan yang sesuai di sebelah kanan!

Fungsi Logaritma

Invers fungsi $y = f(x) = {}^a\log x$

Fungsi Monoton Naik

Fungsi Monoton Turun

Daerah Asal

$y = f(x) = a^x$

$a > 1$

Domain

$0 < a < 1$

$y = f(x) = {}^a\log x$