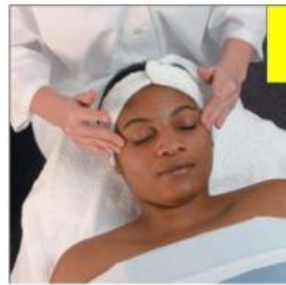


45. Select types of massage movement with the image:



46. What is an enzyme peel?

- a. Acne treatment using a nourishing cream.
- b. Cleansing procedure using banana peels.
- c. Exfoliating procedure using fruit acids.
- d. Exfoliation treatment that uses natural enzymes derived from fruits.

47. Types of massage movement.



- Rapid shaking movement
- Soft, continuous stroking movement
- Kneading movement that stimulates (Fulling)
- Rubbing movement (Chucking, Rolling, Wringing)
- Known as Percussion, like piano movement



48. Is there anything use daily to reduce dryness?

- a. Moisturizer.
- b. Treatment cream.
- c. Night cream.
- d. Massage cream.

49. Select infection control levels:



The highest level of decontamination eliminates all forms of microbial life, including spores.

The higher level of cleaning that uses chemicals or heat.

The most basic level of cleaning with soap and water.



50. An adolescent entering puberty has inquired about getting rid of blackheads and milia. The MOST effective way to clear up skin is:

- a. The sale of multiple skin care products.
- b. Daily treatments within the salon.
- c. The removal and cleansing of blemishes.
- d. Chemicals and laser treatments.

51. During the consultation, a client indicates they have vitiligo. How does this appear on the skin?



52. When analyzing the skin through a Wood's lamp, hyperpigmentation will appear:

- a. Blue.
- b. Yellow.
- c. Orange.
- d. Brown.

53. During extractions, the implement falls to the floor. What should the practitioner do next?

- a. Pick up the implement, wash it, and continue with extractions.
- b. Pick up the implement, place it in the “items to be disinfected” container, replace gloves, and continue with extractions.
- c. Pick up the implement, place it on the workstation, wash hands, and continue with extractions.
- d. Stop the service, disinfect the entire work area, replace gloves, and continue with extractions.

54. The negative electrode of an electrotherapy device is called a:

- a. Anode.
- b. Electron.
- c. Carbide.
- d. Cathode.



55. is the process that introduces water-soluble products into the skin.

- a. Desincrustation
- b. Iontophoresis
- c. Anaerobic
- d. Cannibalism

56. Arrange the effects of the galvanic current:

| | | | |
|-----------------------------|--------------------------------|-----------------------------|--------------------------|
| Increases blood circulation | Causes an acidic reaction | Softens and relaxes tissue | Stimulates nerve endings |
| Decreases blood circulation | Calms or soothes nerve endings | Causes an alkaline reaction | Tightens the skin |

NEGATIVE POLE (CATHODE):
ANAPHORESIS (Negative Solutions)

| | |
|--|--|
| | |
| | |

POSITIVE POLE (ANODE):
CATAPHORESIS (Positive Solutions)

| | |
|--|--|
| | |
| | |

57. Clients with which Fitzpatrick skin type tend to have the most sensitive skin?

- a. Skin type I.
- b. Skin type V.
- c. Skin type VI.
- d. Skin type III.



58. What is a characteristic of Seborrhea?

- a. Excessive hair growth.
- b. Blisters.
- c. Wrinkles.
- d. Flaking skin.

59. When should you analyze the skin type and condition?

- a. While performing services.
- b. Before performing services.
- c. While scheduling the next appointment.
- d. While selecting products.

60. What does a clay mask do as it dries and tightens?

- a. Seal follicles.
- b. Rupture comedones.
- c. Extract facial hairs.
- d. Draw impurities to the surface.



61. How does dehydrated skin appear under a Woods Lamp?

- a. Light turquoise/Blue.
- b. Deep Red.
- c. Deep emerald/Green.
- d. Light Violet/Purple.

62. What is a heat effect that is used for permanent hair removal?

- a. Thermolysis.
- b. Saponification.
- c. Desincrustation.
- d. Anaphoresis.