

Objectives
Graph and
analyze
tangent
functions.



Tangent

Find the period for each tangent function.

The period of $y = \tan 4x$ is

a. $\frac{\pi}{4}$

b. $\frac{\pi}{2}$

c. 2π

d. 4π

The period of $y = \tan \frac{1}{3}x$ is

a. 3π

b. $\frac{\pi}{3}$

c. $\frac{\pi}{6}$

d. 6π

Find the period of this tangent function.

The period of $y = 2 \tan (3x)$ is

a. 2π

b. $\frac{\pi}{2}$

c. $\frac{\pi}{3}$

d. 3π

Two consecutive vertical asymptotes of

$y = \tan \left(x - \frac{\pi}{2} \right)$ are

a. $x = -\frac{\pi}{2}$ and $x = \frac{\pi}{2}$

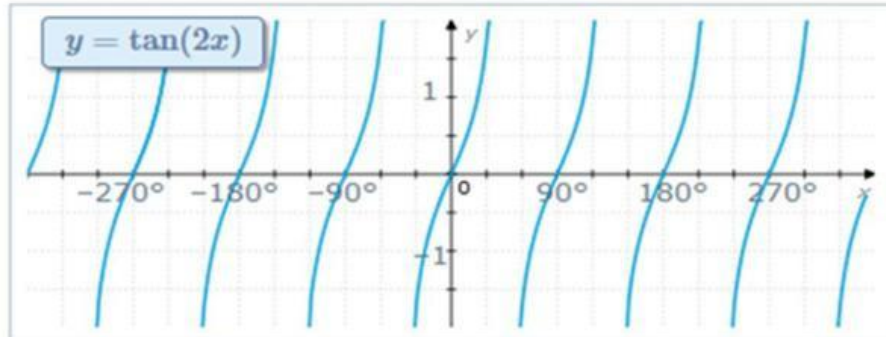
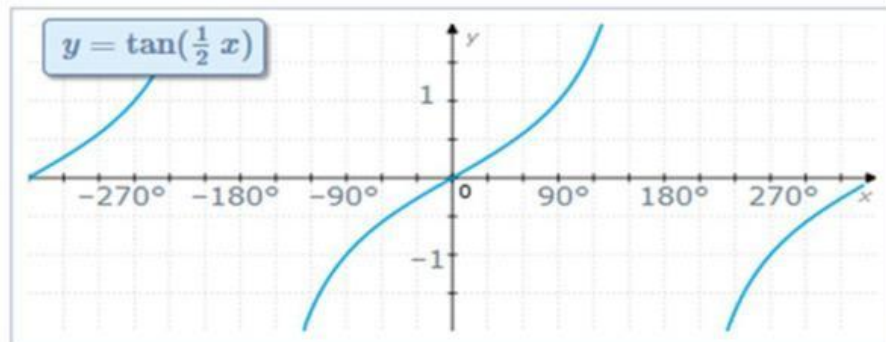
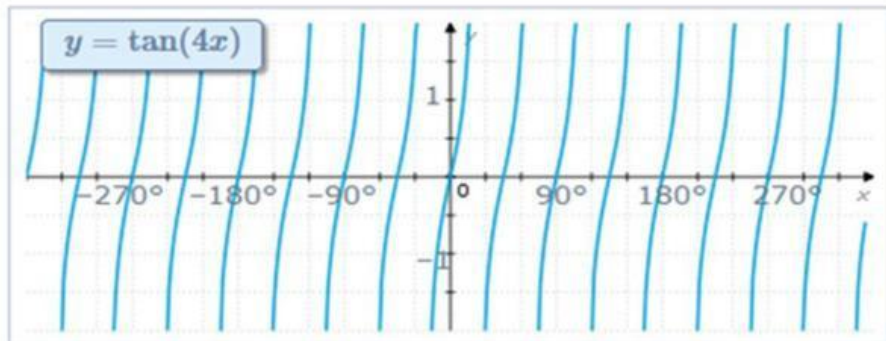
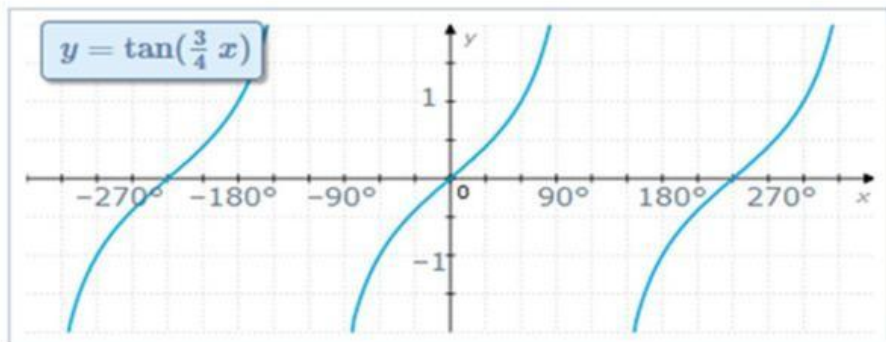
b. $x = -\pi$ and $x = \pi$

c. $x = 0$ and $x = \pi$

d. $x = 0$ and $x = \frac{\pi}{2}$

ObjectivesGraph and
analyze
tangent
functions.

period

LIVEWORKSHEETS
T $T = \square^\circ$  $T = \square^\circ$  $T = \square^\circ$  $T = \square^\circ$