

CIRCULATORY SYSTEM

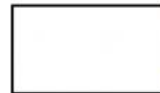
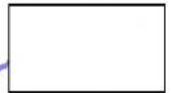
1. Label the picture with the words above.

heart

artery

capillary

vein



2. Join the word with the correct sentence.

Platelets

carry oxygen from the lungs to all the body cells.

White blood cells

transports nutrients and waste products around the body.

Plasma

are fragments of old cells. They repair vessels and help to stop bleeding.

Red blood cells

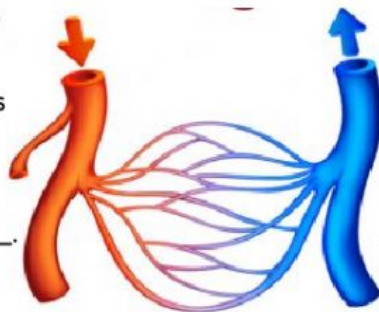
protect us from germs.

3. Fill in the gaps of the three next paragraphs.

_____ are blood vessels

that _____ blood away from the

_____ towards all body _____.



_____ are _____

That transport blood _____ to the

_____ from all body _____.

_____ are blood vessels with very _____ walls.

These walls allow _____ and _____ to pass into the _____.

They also allow _____ and other _____ products to leave the _____.