

Name: \_\_\_\_\_

## What's the Matter?



Tell whether each is a solid, liquid, or gas.

1. milk - \_\_\_\_\_

2. cookie - \_\_\_\_\_

3. oxygen - \_\_\_\_\_

4. fish - \_\_\_\_\_

5. pencil - \_\_\_\_\_

6. maple syrup - \_\_\_\_\_

7. shampoo - \_\_\_\_\_

8. carbon dioxide - \_\_\_\_\_

9. ice cube - \_\_\_\_\_

10. paint - \_\_\_\_\_

11. oil - \_\_\_\_\_

12. salt - \_\_\_\_\_

13. water vapor - \_\_\_\_\_

14. gasoline - \_\_\_\_\_

15. helium - \_\_\_\_\_

16. sand - \_\_\_\_\_

Complete each sentence with the word **solid**, **liquid**, or **gas**.

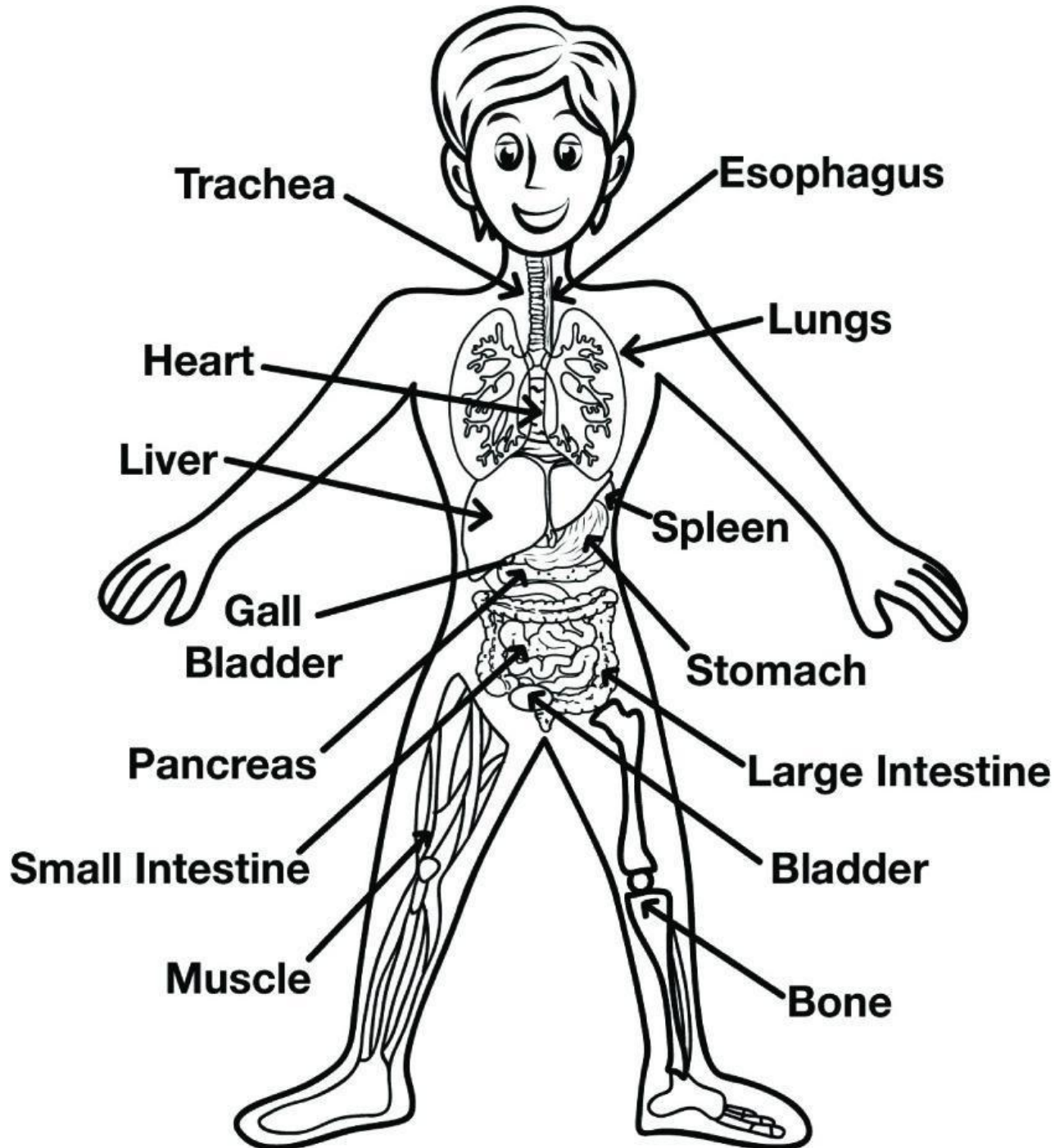
A \_\_\_\_\_ has a definite shape. It does not take the shape of its container. It also has a definite volume because it can be measured.

A \_\_\_\_\_ does not have a definite shape. It takes the shape of its container. It does have a definite volume because it can be measured.

A \_\_\_\_\_ does not have a definite shape. It sometimes takes the shape of its container and sometimes flies freely around you. These particles are not connected to each other and takes up whatever space is available.

Name: \_\_\_\_\_

# Organs of the Human Body



Name: \_\_\_\_\_

## Predator and Prey

A **predator** is an animal that hunts other animals for food.

**Prey** is an animal that is hunted and eaten for food.



Identify the predator and prey for each scenario below.

1. **A robin pulls an earthworm from the lawn and eats it.**

predator - \_\_\_\_\_ prey - \_\_\_\_\_

2. **A shrew is eaten by a barn owl.**

predator - \_\_\_\_\_ prey - \_\_\_\_\_

3. **A seagull lands near an alligator and the alligator eats it.**

predator - \_\_\_\_\_ prey - \_\_\_\_\_

4. **A gray wolf hunts and eats a rabbit.**

predator - \_\_\_\_\_ prey - \_\_\_\_\_

5. **A blue whale swallows krill.**

predator - \_\_\_\_\_ prey - \_\_\_\_\_

6. **A penguin is captured and eaten by a leopard seal.**

predator - \_\_\_\_\_ prey - \_\_\_\_\_

7. **A snapping turtle in a pond eats a small perch.**

predator - \_\_\_\_\_ prey - \_\_\_\_\_

Name: \_\_\_\_\_

