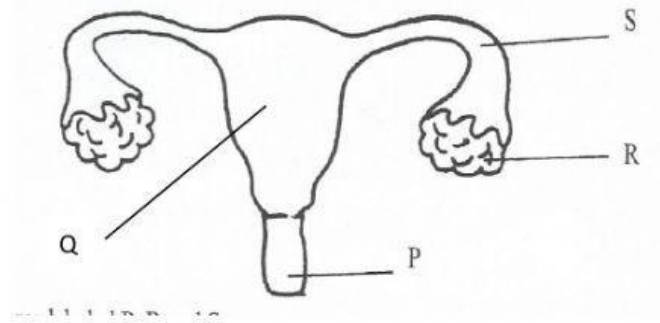



## HEALTH SCIENCE BJC REVIEW

1. Which letter is pointing to the uterus of the female reproductive system?



2. What name is given to the process in which a male and a female gamete (or reproductive cell) join together?
- A. Fertilization
  - B. Insemination
  - C. Intercourse
  - D. Pregnancy
3. Before birth, a developing foetus is contained in a fluid-filled sac in the womb of its mother. What is this fluid called?
- A. Amniotic fluid
  - B. Seminal fluid
  - C. Synovial fluid
  - D. Gastric fluid
4. In humans, how long after fertilization does birth normally take place?
- A. 3 months
  - B. 6 months
  - C. 9 months
  - D. 12 months
5. In human reproduction, the fertilization of two eggs at the same time usually results in
- A. Cloning
  - B. Fraternal twins
  - C. Identical twins
  - D. Mutations

6. What type of twins would be formed when two eggs are released in a woman at the same time and each egg is fertilized by a different sperm cell?
- A. Artificial twins
  - B. Fraternal twins
  - C. Identical twins
  - D. Siamese twins
7. Which of the following may be prevented by wearing a condom?
- A. Lung cancer
  - B. Influenza
  - C. Scurvy
  - D. Syphilis
8. What kind of cell is shown in the diagram at the right and what is its function?
- A. It's a bone cell and its job is to produce marrow.
  - B. It's a muscle cell and its job is to move parts of the body.
  - C. It's a sperm cells and its job is to fertilize an ovum.
  - D. It's a blood cell and its job is to engulf and destroy germs.
- 
9. Menstruation in female is a sign that
- A. Conception has taken place
  - B. Puberty has taken place.
  - C. The female is sterile.
  - D. The female has become pregnant.
10. Which of the following is found in a woman's body, but not in a man's body?
- A. Epididymis
  - B. Oviduct
  - C. Prostate
  - D. Sperm duct