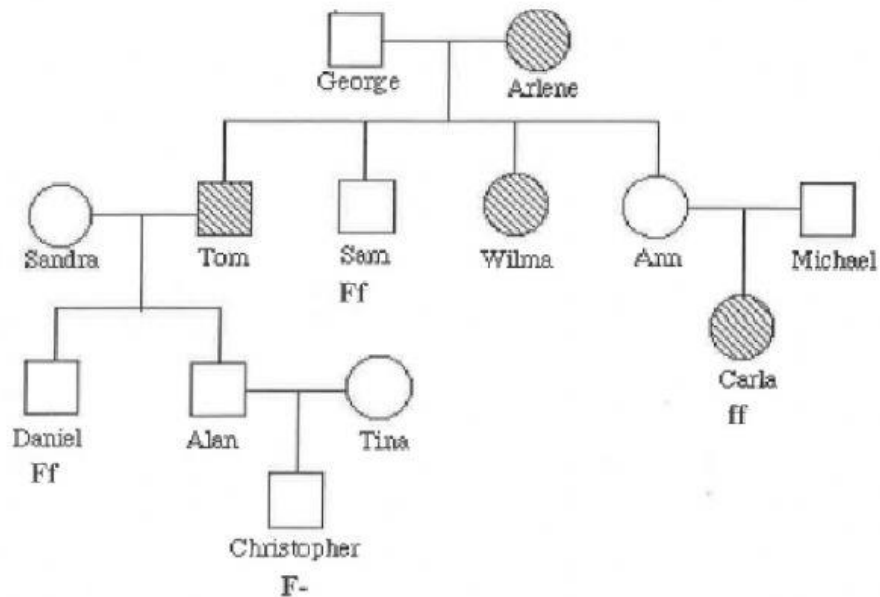


## Autosomal Recessive trait

Trait: Falconi anemia

- Dominant form in normal bone marrow function
- Recessive is Falconi anemia

A typical pedigree for a family that carries Falconi Anemia. Note that carriers are NOT indicated with half colored shapes in this chart.



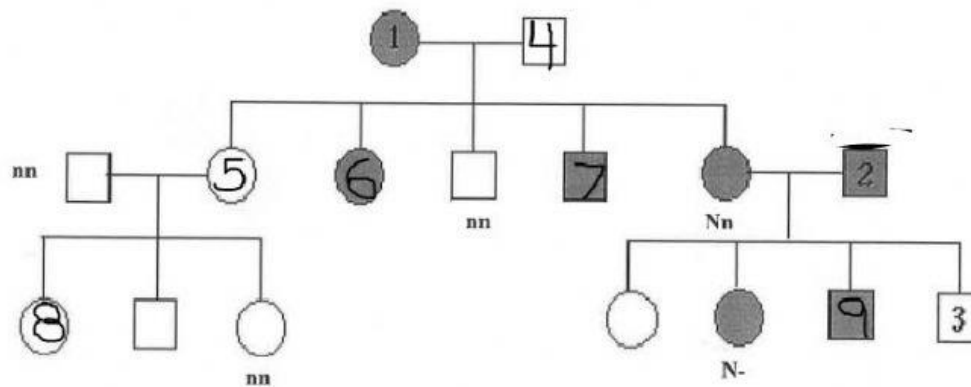
Identify the genotypes of each individual in the chart.

George	Arlene	Sandra	Tom	Wilma
Ann	Michael	Alan	Tina	

Autosomal Dominant trait

Trait: Huntington's disease

- The dominant form is huntington's disease
- The recessive form is normal



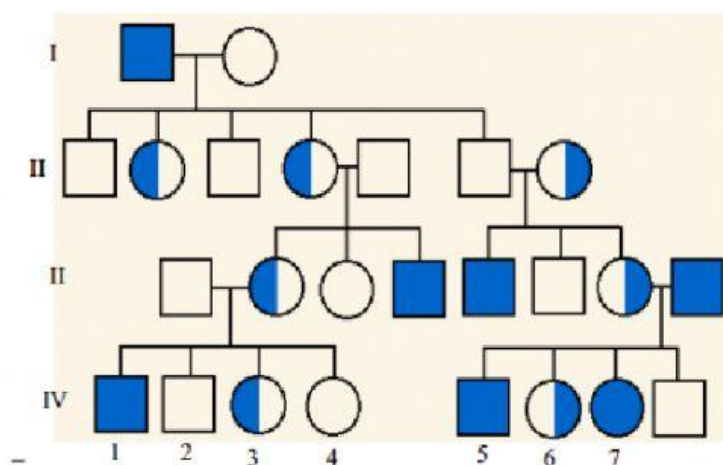
Identify the genotypes of the individuals in the above chart.

1	2	3	4	5	6	7
8	9					

## Sex linked traits

### Trait: Color-blindness

A typical pedigree for a family that carries color blindness is shown below. Note that carriers are indicated the half-colored shapes in this chart. Also, notice that mostly males in this family are color-blind. This is a usual pattern in sex linked traits. Since the gene for color blindness is located on the X chromosome, it is much more likely to be inherited by a male than a female.



1. What sex can ONLY be carriers of colorblindness?
2. With this in mind, what kind of non-mendelian trait is colorblindness?

Identify the genotypes of the following individuals.

1                      2                      3                      4                      5                      6                      7