

# Embryology



shutterstock.com · 2318569847

## Introduction

**Embryology** is the study of how a **baby develops** before birth. It starts at **fertilization**, when a sperm joins an egg. This process is important to understand human development.

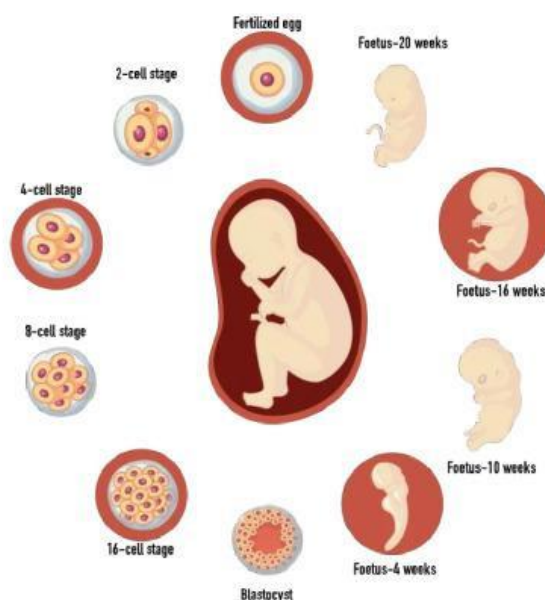
## Fertilization

Fertilization happens when the **sperm cell** meets the **egg cell**. Together they form a **zygote**. The zygote begins to divide and grow. This marks the beginning of a new life.

## Stages of Embryonic Development

The embryo develops in stages:

- **Zygote**
- **Embryo**
- **Fetus**



Each stage has important changes. Organs and systems begin to form during the embryonic stage.

### Importance of Embryology

Embryology helps doctors understand **birth defects**, pregnancy problems, and normal growth. It is important in medicine and health sciences.

### Comprehension Reading Activities – Embryology

#### True (T) or False (F)

- |  |   |   |
|--|---|---|
| 1. Embryology studies adults.              | F | T |
| 2. Development starts before birth.        | F | T |
| 3. Fertilization begins life.              | F | T |
| 4. A zygote forms after fertilization.     | F | T |
| 5. The embryo does not grow.               | F | T |
| 6. The fetus stage comes after the embryo. | F | T |
| 7. Organs form during development.         | F | T |
| 8. Embryology is not useful in medicine.   | F | T |
| 9. Sperm and egg join together.            | F | T |
| 10. Human development has stages.          | F | T |

#### Multiple Choice

11. Embryology studies:

- a) plants
- b) animals
- c) **human development**

12. Fertilization occurs when:

- a) two eggs meet
- b) **sperm and egg join**
- c) baby is born

13. Zygote is:
- a) an adult
  - b) **first cell**
  - c) organ
14. After zygote comes:
- a) fetus
  - b) adult
  - c) **embryo**
15. Organs begin to form in the:
- a) adult
  - b) **embryo**
  - c) sperm
16. The fetus stage is:
- a) first
  - b) **later**
  - c) before fertilization
17. Embryology helps understand:
- a) exercise
  - b) **birth defects**
  - c) sleep
18. Development happens:
- a) only at birth
  - b) **before birth**
  - c) after death
19. Fertilization marks:
- a) the end of life
  - b) **the beginning of life**
  - c) disease
20. Embryology is important in:
- a) art
  - b) **medicine**
  - c) music

T. SUE