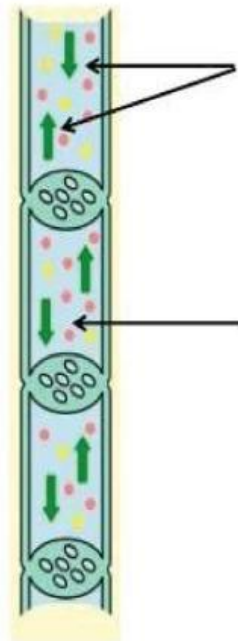


Phloem  
two-way flow

Transports glucose  
throughout the plant



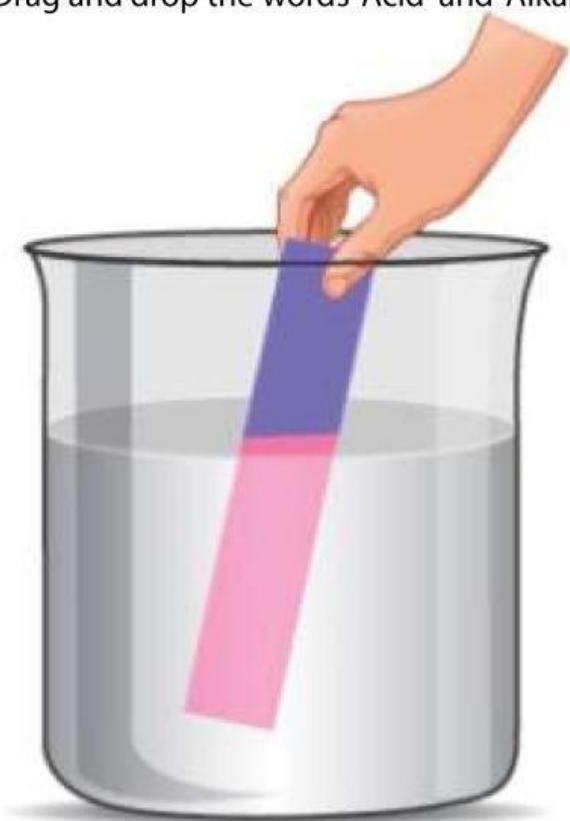
One-way flow

Transports water  
and minerals

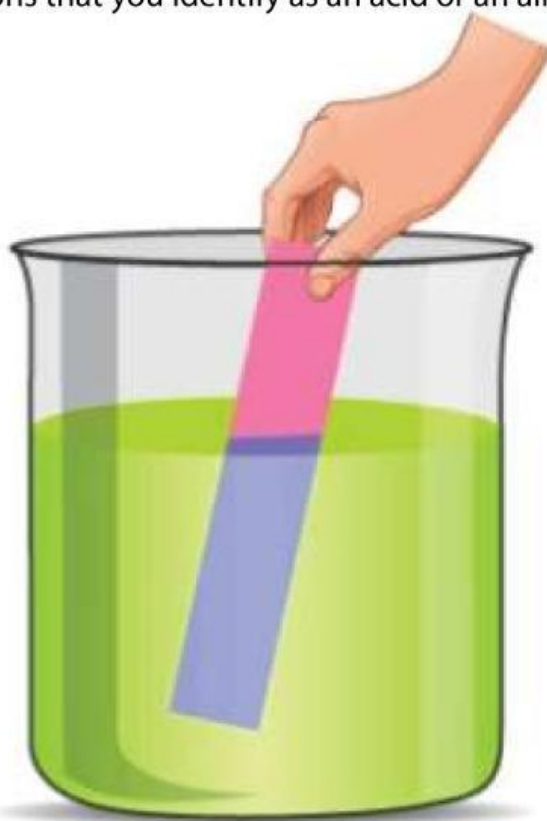
Xylem

Litmus paper is a common indicator used to tell if the solution is acidic or alkaline, but not how strong the acid or alkali is.

Drag and drop the words 'Acid' and 'Alkali' next to the solutions that you identify as an acid or an alkali.



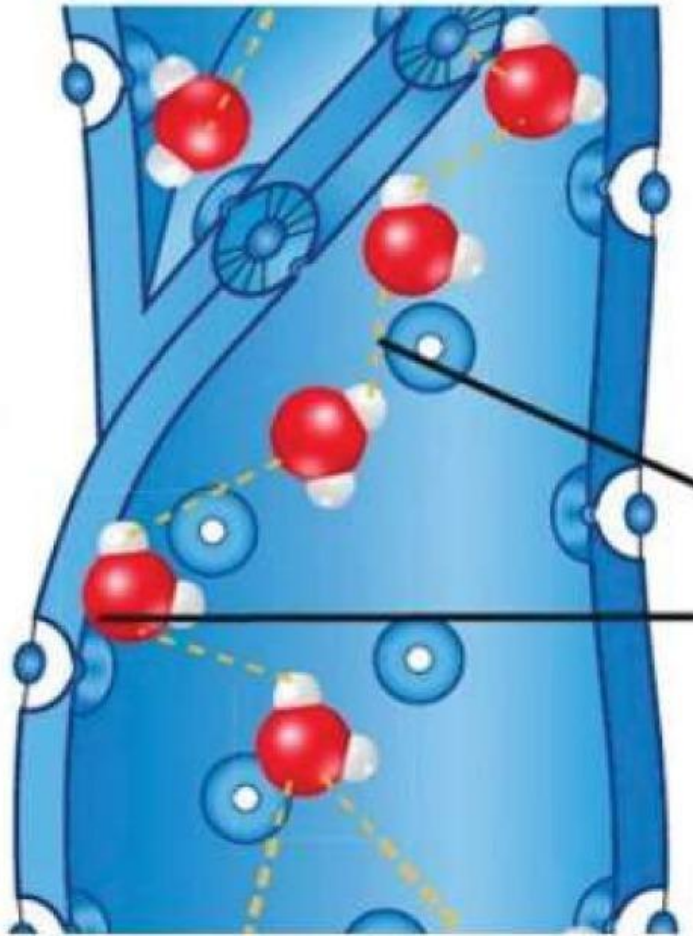
**Acid**



**Alkali**

Water moves up the plant through the xylem vessel within plants. Label the diagram below with the two properties of water that allows this to happen.

[Drag and drop the words onto the diagram]



Adhesion

Cohesion

<b>Gas</b>	<b><i>Amount in inhaled from air</i></b>	<b><i>Amount exhaled from body</i></b>
oxygen		
carbon dioxide		
nitrogen		

same amount as inhaled air

3 %

0.04 %

21 %

3 %

78 %

1 %

Various solutions below have different pH ratings. Correctly identify the pH of the solutions by dragging and dropping the solutions on the pH scale.

The image shows a pH scale from 0 to 14. The scale is represented by a horizontal bar with 15 vertical segments, each containing a number and a color gradient. The colors transition from red at 0, through orange, yellow, green, blue, to purple at 14. Above the scale, there are five yellow rectangular boxes for dragging solutions. Below the scale, there are five yellow rectangular boxes, each containing an illustration and a label for a solution: Drain Cleaner (with a drain cleaner bottle), Battery (with a battery), Soap (with a bar of soap), Water (with a water bottle), and Lemon (with a lemon). The boxes are arranged horizontally below the pH scale.

pH	0	1	2	3	4	5	6	7	8	9	10	11	12	13	14
Solution															

Solution	Drain Cleaner	Battery	Soap	Water	Lemon
Image					

What are the names of the properties of water that allows water to travel up the plant?

[Drag and drop the words below to the correct definitions]

Water molecules stick to other water molecules



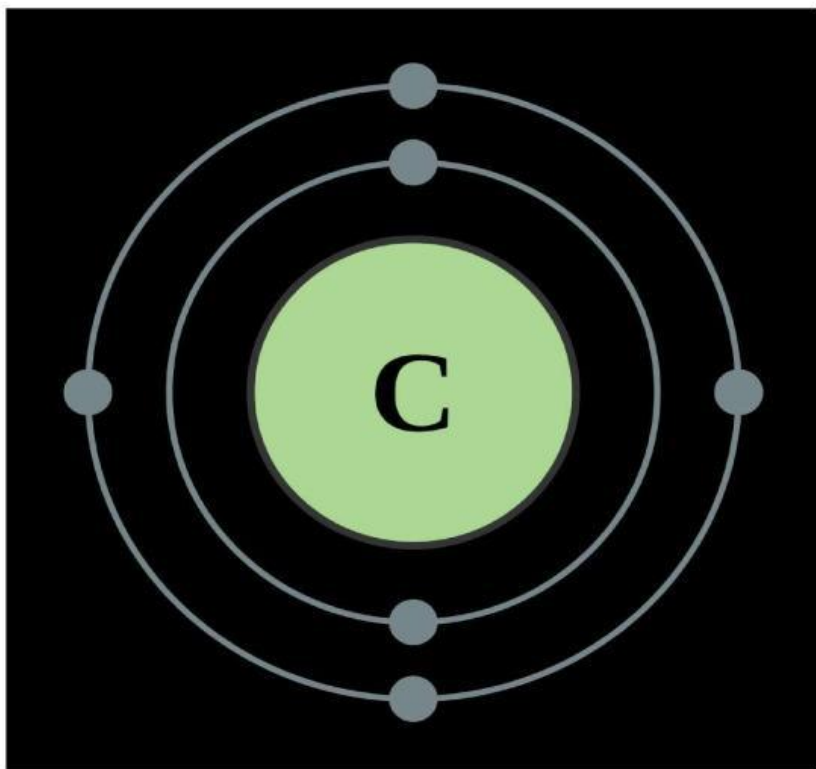
**Adhesion**

Water molecules stick to other substances, like the xylem vessels



**Cohesion**





What group does it belong to?

What is the name of the element?

Answer 2 Question 18

What period does it belong to?

H																	He
Li	Be											B	C	N	O	F	Ne
Na	Mg											Al	Si	P	S	Cl	Ar
K	Ca	Sc	Ti	V	Cr	Mn	Fe	Co	Ni	Cu	Zn	Ga	Ge	As	Se	Br	Kr
Rb	Sr	Y	Zr	Nb	Mo	Tc	Ru	Rh	Pd	Ag	Cd	In	Sn	Sb	Te	I	Xe
Cs	Ba		Hf	Ta	W	Re	Os	Ir	Pt	Au	Hg	Tl	Pb	Bi	Po	At	Rn
Fr	Ra		Rf	Db	Sg	Bh	Hs	Mt	Ds	Rg	Cn	Nh	Fl	Mc	Lv	Ts	Og

La	Ce	Pr	Nd	Pm	Sm	Eu	Gd	Tb	Dy	Ho	Er	Tm	Yb	Lu
Ac	Th	Pa	U	Np	Pu	Am	Cm	Bk	Cf	Es	Fm	Md	No	Lr

What period is the element Sodium in?

What period is the element Neon in?

What element is in group 0 and period 2?

What group is the element Calcium in?

What element has 5 valence electrons and 3 electron shells?

What element is in group 3 and period 3?

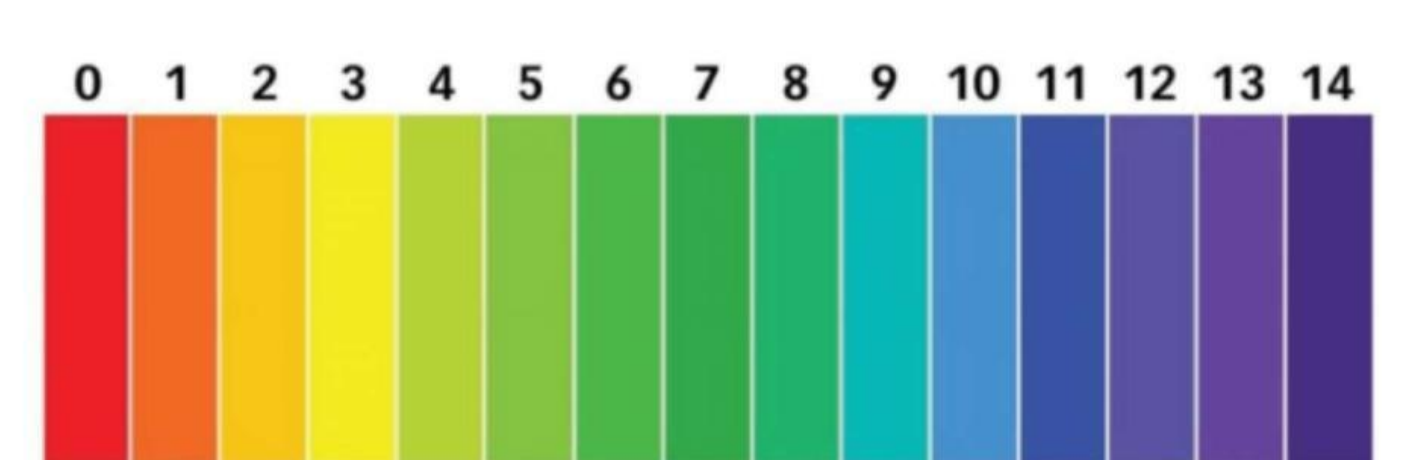
What does the chemical symbol Au stand for?

What element is in period 2 and group 5?

What group is the element Boron in?

What element has 4 valence electrons and 3 electron shells?

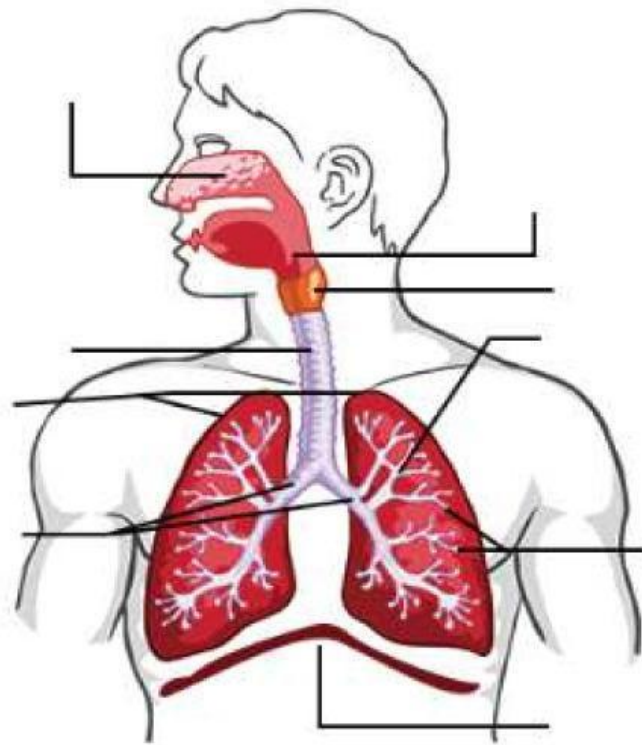




Neutral

Alkaline

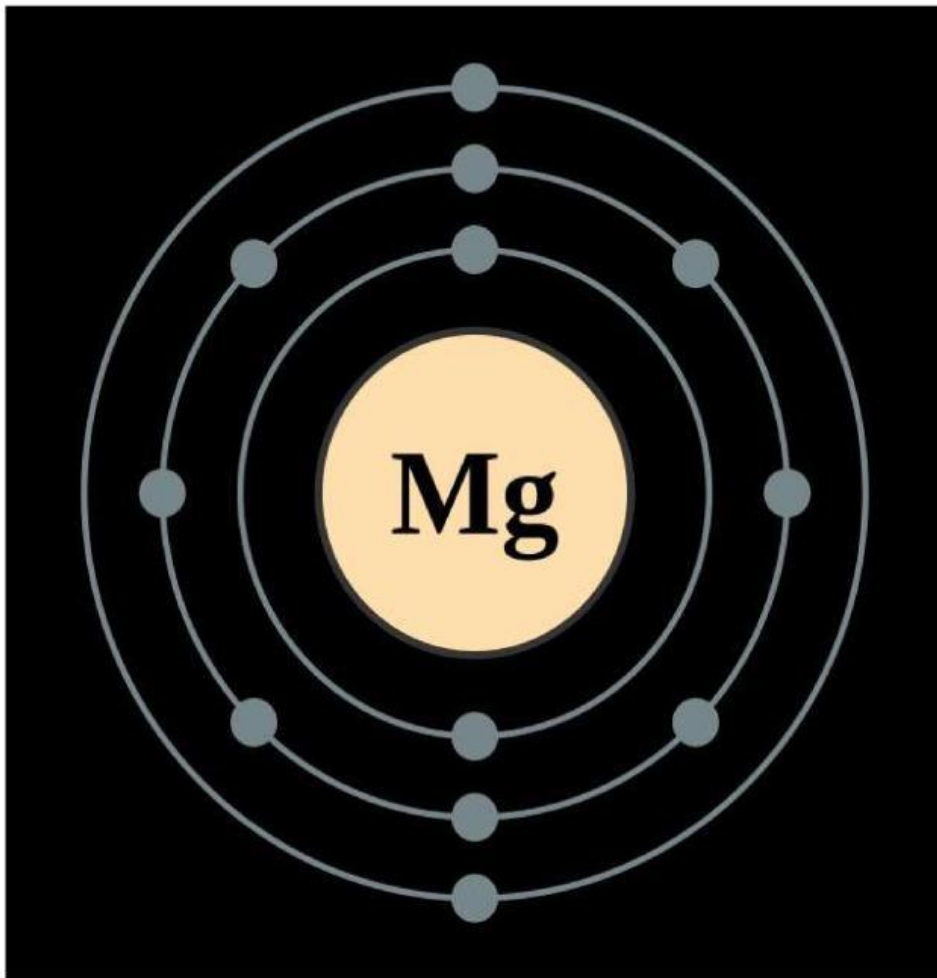
Acidic



Bronchioles   lungs   larynx   Nasal Cavity

Bronchi   Alveoli   Diaphragm   Pharynx

Trachea



What is the name of the element?

What period does the element belong in?

What group does the element belong in?