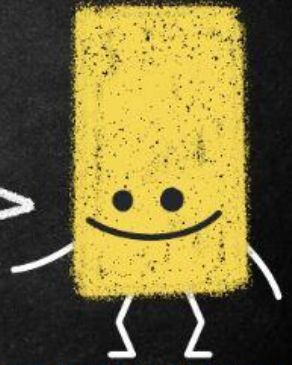


QUIZ #2

DESCRIBING ANIMALS



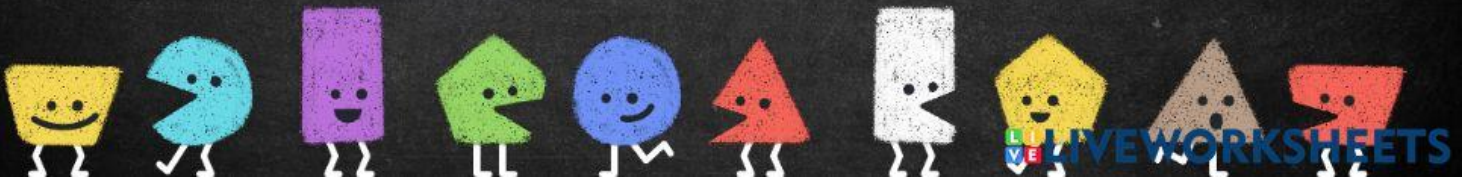
AHMAD ABDUL AZIZ MUSLIM
SMP NEGERI 1 FAKFAK



HELLO!

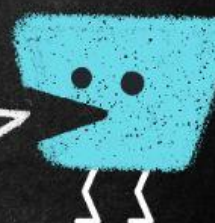
Nama: -----

Kelas:-----



WATCH THE FOLLOWING VIDEO!
DO THE INSTRUCTION THAT FOLLOWS!

MENTION ANIMALS THAT YOU SEE IN
THE VIDEO!



MATCH THE ADJECTIVES WITH THEIR
MEANING IN BAHASA INDONESIA!

CUTE

WILD

BIG

LONG

FAST

DANGEROUS

SHORT

SAFE

TAME

SLOW

UGLY

SMALL



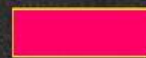
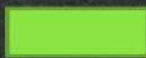
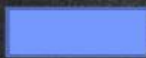
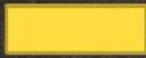
HEAVY

STRONG

LONG



DRAG AND DROP THE ADJECTIVES
THAT SUITE TO THE ANIMALS!



SMALL

SLOW

FAST



LISTEN TO THE SOUND OF THE ANIMALS!

6

PLAY MP3

WRITE 3 ANIMALS YOU HEAR!



IT IS A WILD ANIMAL. IT LIVES IN JUNGLE.
IT IS BIG. IT HAS LONG NOSE.
IT HAS FOUR LEGS. IT HAS FOUR WIDE EARS.
IT EATS LEAVES AND NUTS.
IT CAN RUN FAST TOO.

IT IS A/AN

A. LION

C. GIRAFFE

B. TIGER

D. ELEPHANT



IT IS A WILD ANIMAL.

IT LIVES IN NILE RIVER MOSTLY.

IT IS HEAVY. IT HAS BIG WIDE MOUTH.

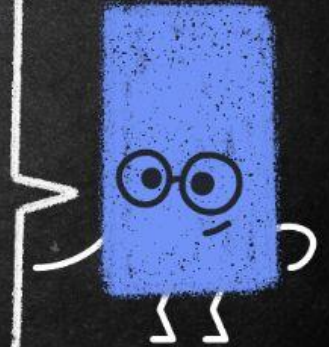
IT HAS FOUR LEGS. IT LIKES TO PLAY IN WATER.

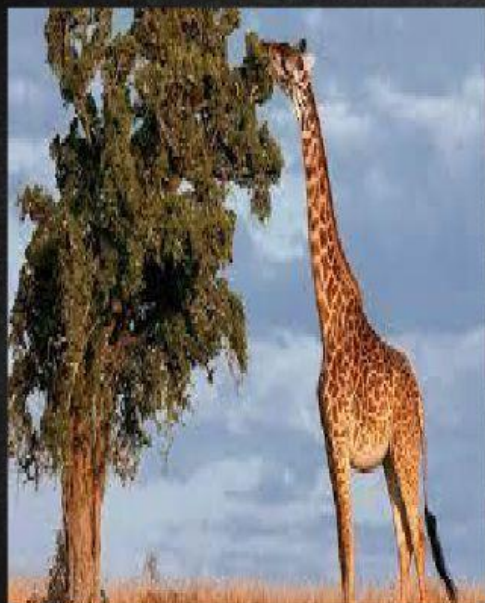
IT EATS GRASS.

IT CAN RUN ON LAND.

IT CAN SWIM ON WATER.

IT IS A/AN





CHOOSE ADJECTIVES TO
DESCRIBE THE ANIMAL!

☐ SMALL

☐ SHORT

☐ TALL

☐ BIG

☐ TAME

☐ WILD

