



Female Reproductive System

1. Label the diagram of the female reproductive system using the key words in the box below.

oviduct

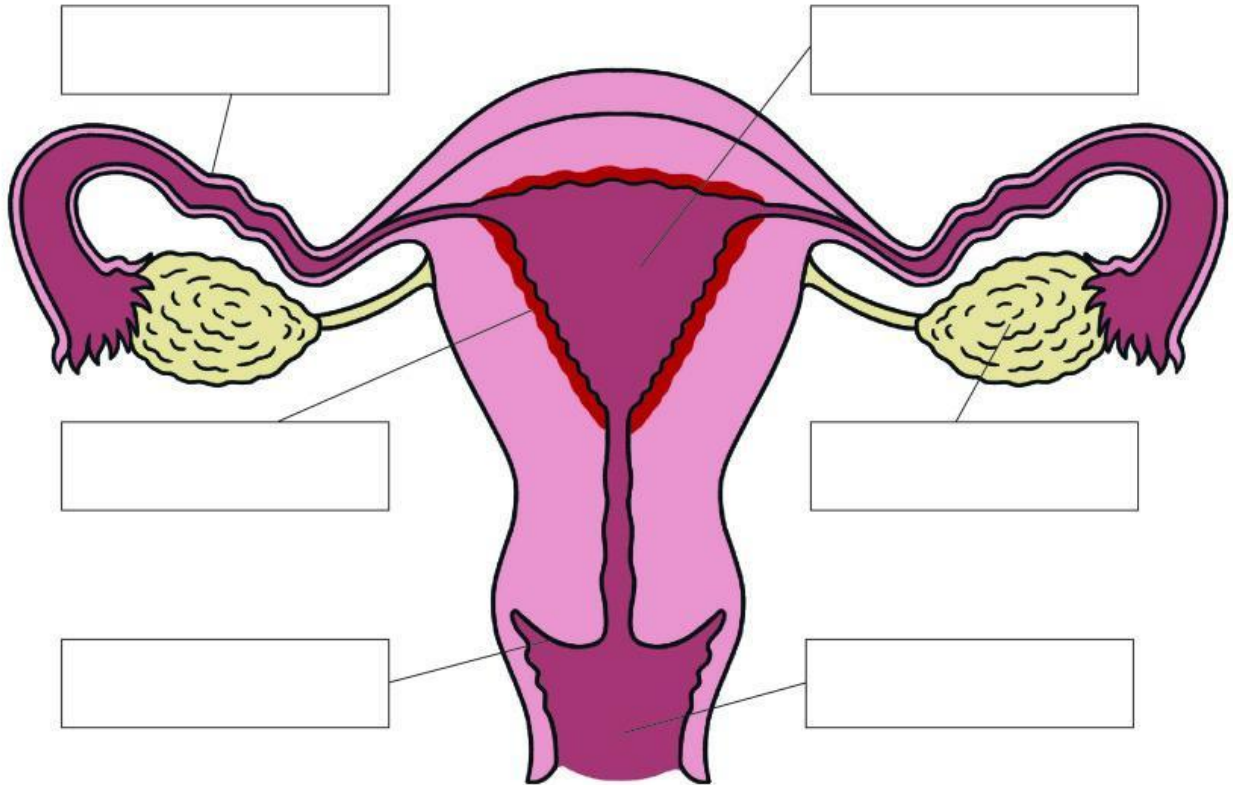
ovary

uterus

uterus lining

cervix

vagina



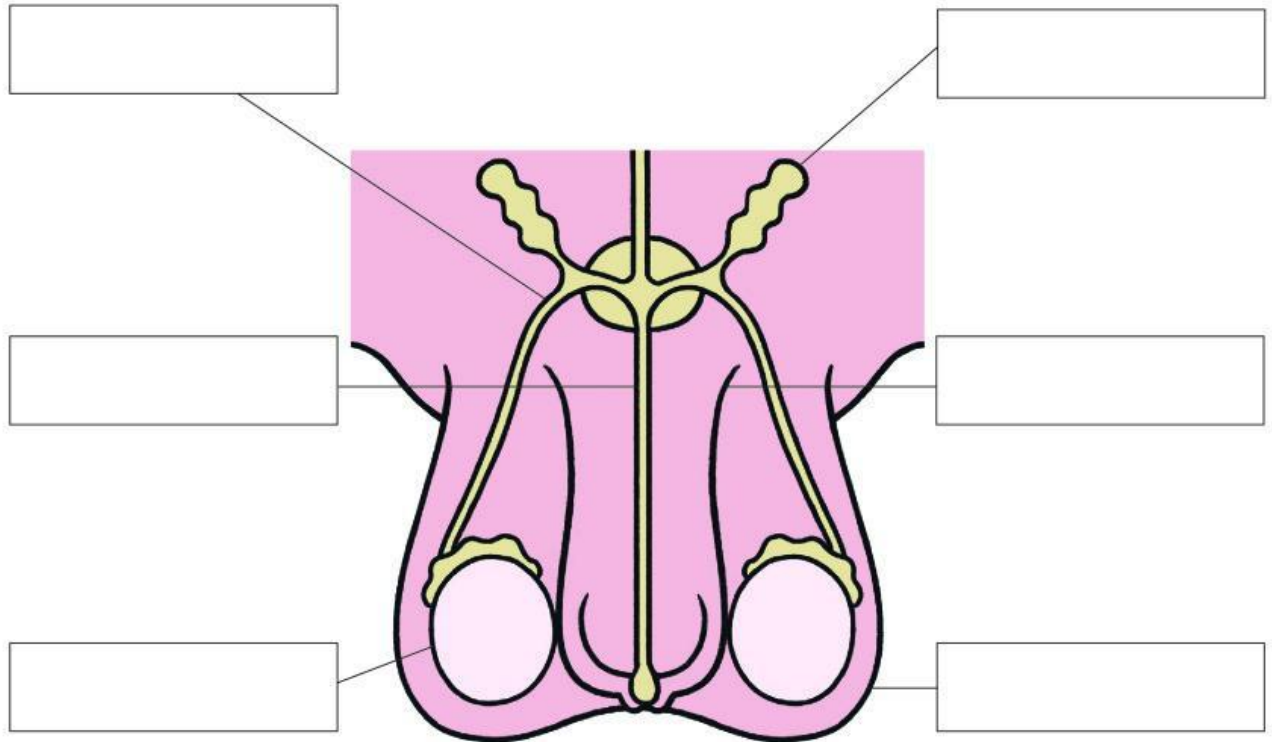
2. Complete the table to show the function of each part of the female reproductive system.

Part	Function
	A muscular tube that leads from the cervix to the outside of the body.
	A ring of muscle at the lower end of the uterus. This keeps the baby in place during pregnancy.
	Contains hundreds of undeveloped egg cells. Every month, an egg cell matures and is released.
	Where the baby develops during pregnancy.
	Carries egg cells from the ovaries to the uterus.
	A blood-rich layer of tissue in which an embryo implants. This tissue is lost each month during menstruation.

Male Reproductive System

1. Label the diagram of the male reproductive system using the key words in the box below.

penis	testis	urethra	scrotum	gland	sperm duct
-------	--------	---------	---------	-------	------------



2. Complete the table to show the function of each part of the male reproductive system.

Part	Function
	Allows urine and semen to pass out of the body.
	Produces sperm cells and releases the male sex hormone testosterone.
	A tube that carries urine and semen. It has a ring of muscle to keep these fluids separate.
	A bag of skin that contains the testes.
	Produces fluids that mix with sperm cells to make semen.
	Carries sperm cells from the testes to the urethra.