



## PENIEL INTEGRATED CHRISTIAN ACADEMY OF RIZAL, INC.

"If any of you lack wisdom, let him ask of God, that giveth to all men liberally, and upbraideth not; and it shall be given him." James 1:5 KJV

### SECOND QUARTER EXAMINATION

NAME:		DATE:
SUBJECT: MAPEH	LEVEL: 6	SCORE: /65

**General Directions: Read each statement carefully before answering. Avoid unnecessary erasures.**

### MUSIC

**I. Direction: TRUE OR FALSE.** Read the statements carefully and tell whether the statement is TRUE or FALSE. And identify the correct answer you will receive 2 points in each question.

1. RHYTHMIC PATTERNS is a combination of notes and rests with long and short durations of different time value. In creating a rhythmic pattern, you must be familiar with beat, meter, duration, measure, and bar lines.

ANSWER: \_\_\_\_\_

2. DURATION is the regular pulse heard or felt in a musical composition.

ANSWER: \_\_\_\_\_

3. BEAT is the length of time of a note or rest.

ANSWER: \_\_\_\_\_

4. REST is the time of sound.

ANSWER: \_\_\_\_\_

5. METER is the grouping of notes and rests in beats. Meter maybe 2,3, or 4 beats.

ANSWER: \_\_\_\_\_

6. BAR LINES separate the notes or rests into measures.

ANSWER: \_\_\_\_\_

7. DOUBLE BAR LINES Indicate the end of the rhythmic pattern.

ANSWER: \_\_\_\_\_

8-9. TIME SIGNATURE is a fraction-like number found at the beginning of a musical piece.

ANSWER: \_\_\_\_\_



10. The time signature of a piece of music is that FRACTION LIKE pair of numbers found at the beginning of a piece of sheet music:

ANSWER: \_\_\_\_\_

**II. Directions: IDENTIFICATION. Identify the rhythm syllable of each corresponding musical symbol and the component of rhythmic pattern from the image provided. Encircle the letter of the correct answer.**



1. a. Sh-h-h-h      b. Sh-h      c. Sh



2. a. Sh-h-h-h      b. Sh-h      c. Sh



3. a. Ta-ah-ah-ah      b. Ta-ah      c. Ta



4. a. Ta-ah-ah-ah      b. Ti-ti      c. Ta



5. a. Sh (short)      b. Ta-ah-ah-ah      c. Sh-h



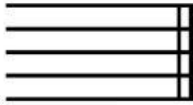
6. a. Ta-ah      b. Sh      c. Ta-ah-ah-ah



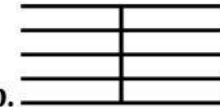
7. a. Ta      b. Sh      c. Ta-ah-ah-ah



8. a. Sh (short) b. Ta-ah-ah-ah c. Sh-h



9. a. Duration b. Beat c. Double bar lines



10. a. Bar lines b. Beat c. Double bar lines

## ARTS

**I. Direction: TRUE OR FALSE. Write TRUE if the statement is correct and FALSE if it is incorrect.**

- \_\_\_\_\_ 1. Personal logo is a personal graphic symbol that represents a personal brand service.
- \_\_\_\_\_ 2. Keep in mind that the character doesn't have to be well- proportioned.
- \_\_\_\_\_ 3. Some cartoon characters look silly, clumsy, and funny. They are called goofy characters.
- \_\_\_\_\_ 4. In making a rough sketch of a cartoon character, draw the basic shapes of the figure then gradually add details and feature.
- \_\_\_\_\_ 5. In creating a personal logo, you need to research in the internet for logos that catch your attention.
- \_\_\_\_\_ 6. Having big shoulders can also exude the quality of the clumsiness and silliness of the character.
- \_\_\_\_\_ 7. You can copy someone else's entire concept of a personal logo.
- \_\_\_\_\_ 8. The size of the body parts of your cartoon character doesn't need to complement one another.
- \_\_\_\_\_ 9. You can use a thinner or bigger head for your character to look funny or goofy.



- \_\_\_\_\_10. The round shape helps give your character a dynamic look and makes it more interesting.
- \_\_\_\_\_11. The use of a big or long nose for human characters, and big snout for animals can also make the cartoon look funny.
- \_\_\_\_\_12. Brainstorm and list down your options to make creating an appropriate and effective personal logo easier.
- \_\_\_\_\_13. When creating a personal logo, include your company name in the logo.
- \_\_\_\_\_14. Use a hand down illusion or your own penmanship to give your logo that unique touch that is only yours.
- \_\_\_\_\_15. Having a big teeth can make a goofy character more effective in portraying his or her role.

## PHYSICAL EDUCATION

**Direction: MULTIPLE CHOICE. Box the letter of the correct answer.**

1. It means to cross one foot over the other.
  - a. Close step
  - b. Cross step
  - c. Lateral
  - d. Curtsy
2. It is a step with a point in the rear, bending the body slightly forward.
  - a. Close step
  - b. Cross step
  - c. Lateral
  - d. Curtsy
3. It is a step and close towards the other foot.
  - a. Inside foot
  - b. Outside foot
  - c. Close step
  - d. Point
4. It refers to the foot nearest the partner.
  - a. Inside foot
  - b. Outside foot
  - c. Close step
  - d. Point



5. It means to touch toes on the floor.
  - a. Inside foot
  - b. Outside foot
  - c. Close step
  - d. Point
  
6. It means to touch the heel or toe on the floor.
  - a. Lateral
  - b. Place
  - c. Outside foot
  - d. Inside foot
  
7. It can be formed by placing both arms on one side at shoulder level.
  - a. Lateral
  - b. Place
  - c. Outside foot
  - d. Inside foot
  
8. It is the foot away from the partner.
  - a. Lateral
  - b. Place
  - c. Outside foot
  - d. Inside foot
  
9. The following are ways to reduce the risks of having injuries when dancing EXCEPT \_\_\_\_\_.
  - a. Warm up completely before you start the dance.
  - b. Immediately copy others when they dance if you are a beginner.
  - c. Drink plenty of water before, during, and after dancing.
  - d. Wear fitted clothes appropriate to your style of dancing.
  
10. The following are ways to reduce the risks of having injuries when dancing EXCEPT \_\_\_\_\_.
  - a. Take sufficient rests between sessions.
  - b. Concentrate and maintain correct posture.
  - c. Push yourself too much, especially if you are a beginner.
  - d. Consult your doctor about your medical condition.

## HEALTH

**I. Directions: MULTIPLE CHOICE. Identify the kind of waste defined on each item. Encircle the letter of the correct answer from the options provided.**



1. These are organic wastes from gardening or landscaping such as soil, grass cuttings, leaves, and tree branches.

- a. Dumped wastes
- b. Industrial wastes
- c. Business wastes
- d. Garden wastes

2. These are waste materials from medical or veterinary sources.

- a. Chemical wastes
- b. Pharmaceutical wastes
- c. Healthcare wastes
- d. Hazardous wastes

3. This type of waste includes all animal and human tissues, organs, body parts, fetuses, blood, and other bodily fluids.

- a. Chemical wastes
- b. Pharmaceutical wastes
- c. Healthcare wastes
- d. Pathological wastes

4. This type of waste includes discarded solid, liquid, and gaseous chemicals.

- a. Chemical wastes
- b. Pharmaceutical wastes
- c. Healthcare wastes
- d. Pathological wastes

5. These are any expired, unused, and contaminated pharmaceutical products, drugs, vaccines, and others.

- a. Chemical wastes
- b. Pharmaceutical wastes
- c. Healthcare wastes
- d. Pathological wastes

**II. Directions: TRUE OR FALSE. Write TRUE if the statement is correct and FALSE if the statement is incorrect.**

- \_\_\_\_\_ 1. One good characteristic of a good physical environment is clean and neat.
- \_\_\_\_\_ 2. The people treat each other warmly.
- \_\_\_\_\_ 3. The support system among the members of the community is evident.
- \_\_\_\_\_ 4. All members are happy and contented.
- \_\_\_\_\_ 5. The environment is safe and secured.

**III. Direction: Essay. Explain your answer on the question below in 3-5 sentences. (5 points)**

11-15. As a student, how do you show your support in promoting and maintaining a healthy school and community environment?

MUSIC: \_\_\_\_/20

ARTS: \_\_\_\_/15

P.E.: \_\_\_\_/10

HEALTH: \_\_\_\_/15

Total Score: \_\_\_\_/60

