

PART 2

Directions: You will hear a question or statement and three responses spoken in English. They will not be printed in your test book and will be spoken only one time. Select the best response to the question or statement and mark the letter (A), (B) or (C) on your answer sheet.

- | | |
|--|--|
| 7. Mark your answer on your answer sheet. | 20. Mark your answer on your answer sheet. |
| 8. Mark your answer on your answer sheet. | 21. Mark your answer on your answer sheet. |
| 9. Mark your answer on your answer sheet. | 22. Mark your answer on your answer sheet. |
| 10. Mark your answer on your answer sheet. | 23. Mark your answer on your answer sheet. |
| 11. Mark your answer on your answer sheet. | 24. Mark your answer on your answer sheet. |
| 12. Mark your answer on your answer sheet. | 25. Mark your answer on your answer sheet. |
| 13. Mark your answer on your answer sheet. | 26. Mark your answer on your answer sheet. |
| 14. Mark your answer on your answer sheet. | 27. Mark your answer on your answer sheet. |
| 15. Mark your answer on your answer sheet. | 28. Mark your answer on your answer sheet. |
| 16. Mark your answer on your answer sheet. | 29. Mark your answer on your answer sheet. |
| 17. Mark your answer on your answer sheet. | 30. Mark your answer on your answer sheet. |
| 18. Mark your answer on your answer sheet. | 31. Mark your answer on your answer sheet. |
| 19. Mark your answer on your answer sheet. | |

PART 3

Directions: You will hear some conversations between two or more people. You will be asked to answer three questions about what the speakers say in each conversation. Select the best response to each question and mark the letter (A), (B), (C) or (D) on your answer sheet. The conversations will be not printed in your test book and will be spoken only one time.

- | | |
|--|---|
| 32. What kind of business is the man calling?
(A) An amusement park
(B) A concert venue
(C) A restaurant
(D) A movie theater | 38. What problem is the woman having?
(A) She lost her parking permit.
(B) She cannot access a building.
(C) Her ID card has expired.
(D) Her handbag has been stolen. |
| 33. What problem does the man mention?
(A) An employee was disrespectful.
(B) A price is too high.
(C) A scheduling conflict has occurred.
(D) An order quantity is incorrect. | 39. What does the man imply when he says, "I just got here five minutes ago"?
(A) He is sorry for arriving late.
(B) He is unable to answer the question.
(C) He has successfully solved a problem.
(D) He will ask a colleague for assistance. |
| 34. What does the woman offer the man as an apology?
(A) A seat upgrade
(B) A free meal
(C) A price reduction
(D) A gift bag | 40. What does the man ask the woman to do?
(A) Return tomorrow morning
(B) Provide a phone number
(C) Submit a report
(D) Contact her supervisor |
| <hr/> | |
| 35. What project are the speakers discussing?
(A) Purchasing a building
(B) Hiring new employees
(C) Preparing for an event
(D) Cleaning some rooms | 41. What does the man want the woman to do?
(A) Type a letter.
(B) Buy him a sweater.
(C) Have lunch with him.
(D) Work this evening. |
| 36. What will happen tomorrow?
(A) An inspection will be carried out.
(B) Some equipment will be installed.
(C) A presentation will be given.
(D) Some clients will arrive. | 42. What is the woman doing now?
(A) Eating lunch.
(B) Leaving for the golf course.
(C) Making copies.
(D) Sending e-mail. |
| 37. What will the woman ask her work crew to do?
(A) Test devices
(B) Attend training
(C) Work overtime
(D) Meet with technicians | 43. Where is the man going?
(A) To a restaurant.
(B) To his office.
(C) To the post office.
(D) To the photocopy store |
| <hr/> | |

44. When will the phones be installed?
(A) Monday before noon.
(B) Monday afternoon.
(C) Wednesday before noon.
(D) Wednesday afternoon.

45. Why weren't the phones installed last week?
(A) The equipment was out of order.
(B) They couldn't get an appointment.
(C) The order was placed too late.
(D) They didn't bring the right kind of phone.

46. How long have they been waiting for the phones?
(A) Under a week.
(B) One week.
(C) One month.
(D) More than a month.
-

47. How many dozen pens is the man ordering?
(A) Two.
(B) Four.
(C) Six.
(D) Twelve.

48. What colors does he want?
(A) Green and purple.
(B) Green and red.
(C) Red, black, and blue.
(D) Red, black, and purple.

49. How will he pay for the pens?
(A) He will pay by check.
(B) He will pay with cash.
(C) The woman will send him a bill.
(D) The woman will charge it to his account.
-

50. Where does this conversation take place?
(A) At the dinner table.
(B) In a grocery store.
(C) In a bookstore.
(D) At a bakery.

51. What does the man want the woman to do?
(A) Cook a meal.
(B) Stop coughing.
(C) Eat some more.
(D) Sing a song.

52. What does the woman want to do?
(A) Read a book.
(B) Bake a cake.
(C) Drink coffee.
(D) Pick up her mail.
-

53. Who is giving advice?
(A) A travel agent.
(B) A physician.
(C) A teacher.
(D) A golfer.

54. What is the woman's problem?
(A) She lost her job.
(B) She works too much.
(C) She never takes a walk.
(D) She can't decide on a place for a vacation.

55. What will the woman do?
(A) Go to the health club.
(B) Learn to play golf.
(C) Take a vacation.
(D) Hire someone to help her.
-

56. What don't the speakers like?

- (A) Spring.
- (B) The heat.
- (C) The rain.
- (D) Standing.

57. How is the weather today?

- (A) Sunny.
- (B) Cool.
- (C) Humid.
- (D) Icy.

58. When does this conversation take place?

- (A) May.
- (B) September.
- (C) November.
- (D) December.

59. What is the woman looking for?

- (A) Her raincoat.
- (B) Her boots and umbrella.
- (C) Her bus ticket.
- (D) Her watch.

60. What is the weather like?

- (A) Hot.
- (B) Cold.
- (C) Rainy.
- (D) Misty.

61. When will the bus leave?

- (A) In 15 minutes.
- (B) In 20 minutes.
- (C) In 29 minutes.
- (D) In 50 minutes.

Local Restaurants - Private Dining Rooms	
Restaurant	Seating Capacity
Four Kings	15
Antonidas	25
Willow	40
Garibaldi's	55

62. What information about the meal did the woman receive yesterday?

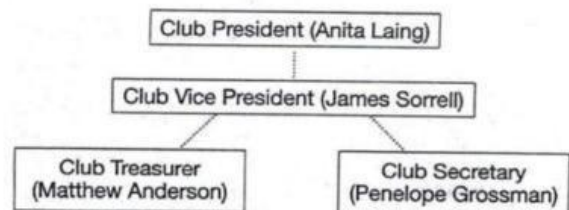
- (A) The event budget
- (B) The guest list
- (C) The menu options.
- (D) The reservation time

63. Look at the graphic. Which restaurant do the speakers choose?

- (A) Four Kings
- (B) Antonidas
- (C) Willow
- (D) Garibaldi's

64. What does the man say he will take care of?

- (A) Organizing transportation
- (B) Preparing a speech
- (C) Making a payment
- (D) Notifying employees



65. What type of club do the speakers most likely belong to?

- (A) A tennis club
- (B) A bowling club
- (C) A badminton club
- (D) A rock climbing club

66. Look at the graphic. Which position is being discussed?

- (A) Club President
- (B) Club Vice President
- (C) Club Treasurer
- (D) Club Secretary

67. What will the man do next?

- (A) Change a schedule
 - (B) Make an announcement
 - (C) Visit headquarters
 - (D) Create a poster
-

TriCore Fitness Center
Additional Services

Fitness assessment	\$5
Yoga class	\$8
Meal planning	\$15
Private trainer	\$25

68. Look at the graphic. How much will the woman pay for a service?
- (A) \$5
 - (B) \$8.
 - (C) \$15
 - (D) \$25
69. What does the man say about the evening?
- (A) The facility is usually crowded.
 - (B) The parking area is poorly lit.
 - (C) There are more lockers available.
 - (D) Complimentary drink is provided.
70. What does the man say the woman will need to show?
- (A) A certificate
 - (B) A form of identification
 - (C) A medical report
 - (D) A receipt
-