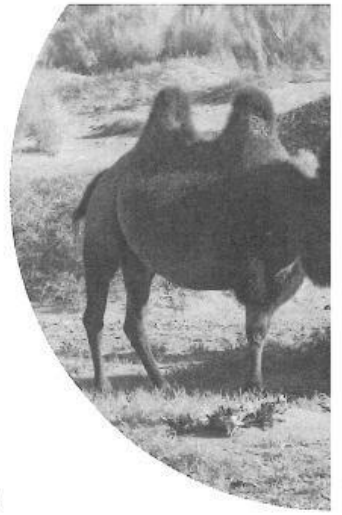


# 3

## The desert



### > 3.1 Deserts around the world

1 Use the text on page 44 of your Learner's Book to answer the following questions.

a What is the largest desert in the world?

---

b Where does the saxual plant store water?

---

c Is it easy to grow food in the desert?

---

d Which plants have thick waxy skin and sharp spines?

---

### Challenge



2 Do you think it's easier to live in a hot desert like the Sahara or a cold desert like Antarctica? Why?

I think...

---

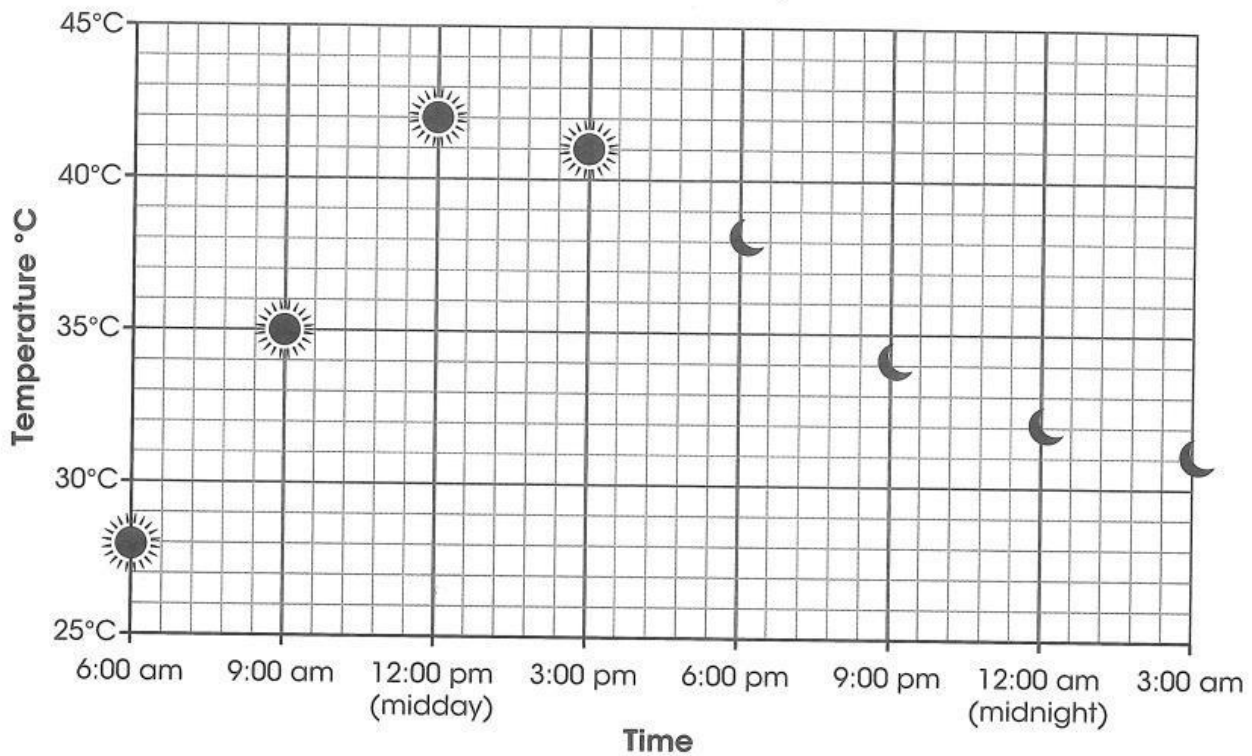
---



- 3 This chart shows the temperature in Kuwait City. Use the chart to complete the sentences.

Kuwait City is a city in the desert.

**am** = morning      **pm** = afternoon and evening



lower      lowest      highest

- a The temperature was highest at midday.
- b The temperature was \_\_\_\_\_ at 6:00 am.
- c The temperature was 35°C at 9:00 am. It was \_\_\_\_\_ at 3:00 am.