

NAME: ..... DATE: .....

**1.- COMPLETE the sentence using the words below.**

SENSITIVITY – REPRODUCTION – LIFE

All living things carry out three ..... processes: nutrition, .....  
and .....

**2.- Read the statements and select TRUE or FALSE.**

- Sensitivity is the process through which living things detect and respond to changes in their environment. TRUE / FALSE
- Animals detect information from their environment through their skeletal system. TRUE / FALSE

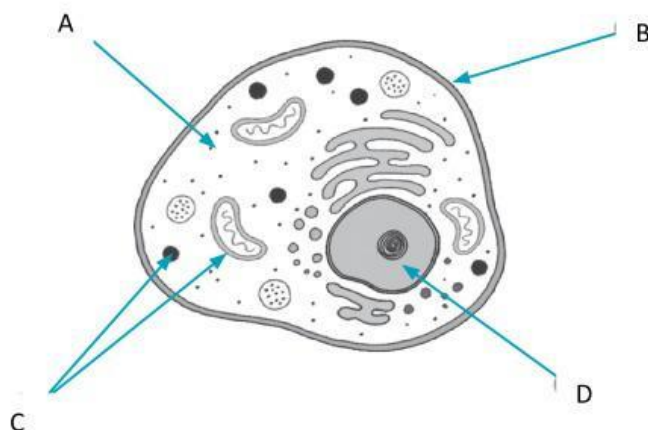
**3.- How do we classify living things by number of cells? MATCH.**

MULTICELLULAR •

• one cell

UNICELLULAR •

• more than one cell

**4.- Label the picture using these words: CYTOPLASM, ORGANELLES, CELL MEMBRANE, NUCLEUS.**

A \_\_\_\_\_

B \_\_\_\_\_

C \_\_\_\_\_

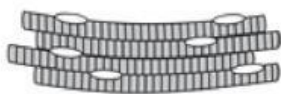
D \_\_\_\_\_

**5.- Drag and drop the following TYPES OF CELLS:**

**INTESTINAL CELL**



**BLOOD CELL**



**MUSCLE CELL**



**6.- Read the text below and SELECT the CORRECT words.**

Plant cells are usually SMALLER / BIGGER than animal cells and they have a REGULAR / IRREGULAR SHAPE. They have a rigid cell CYTOPLASM / WALL around the membrane. Plant cells also have special organelles called CHLOROPLASTS / NUCLEUS, which contain a green substance called chlorophyll to carry out photosynthesis.

**7.- Number the levels of organisation of the human body, from the most simple to the most complex (1 to 5).**

☐ SYSTEMS   ☐ CELLS   ☐ ORGANS   ☐ TISSUES   ☐ ORGANISM

**8.- Write the NAME OF THE KINGDOM that the living things in the photos belong to.**

PLANTS – ANIMALS – BACTERIA – FUNGI – PROTOCTISTS



**9.- Identify the KINGDOM described.**

- They make their own food but cannot move about. ....
- They are the simplest of all living things. ....
- They include yeast. ....

**10.- Tick the TRUE sentences.**

- Animals and plants are multicellular.
- Fungi cannot move about.
- Protozoa can be unicellular or multicellular.
- Bacteria are the smallest and simplest of all living things.