

B. Key Words

1. Write the words under the correct picture.

• hair

• eyes

• mouth

• legs

• long

• short



1)



2)



3)



4)



5)



6)



Step 2 Let's Listen



A. Listening Practice 1

CD1

Track 18

đã dùng

1. Listen and choose the best answer.

1) What does Kelly's monster look like?

a.



b.



c.



d.



2) What does John's monster look like?

a. It has purple hair, three blue mouths and six brown legs.

b. It has purple hair, two pink mouths and six black legs.

c. It has purple hair, two red mouths and six black legs.

d. It has purple hair, two yellow mouths and six black legs.

3) What does the teacher think of their monsters?

a. ugly

b. sad

c. funny

d. scary

B. Listening Practice 2

CD1

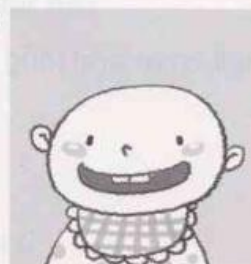
Track 19

1. Listen and complete the picture by drawing the missing parts.

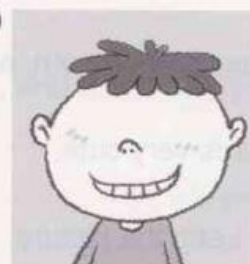
1)



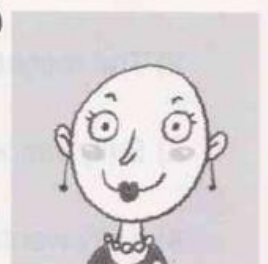
2)



3)



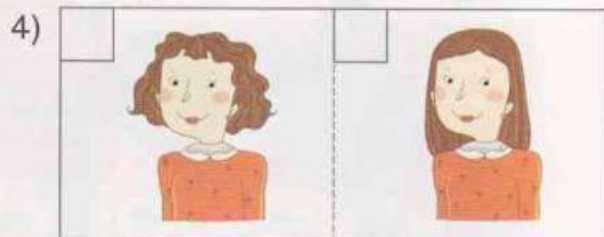
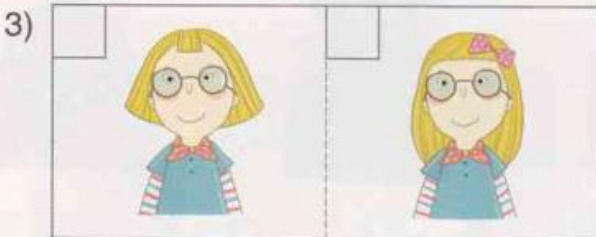
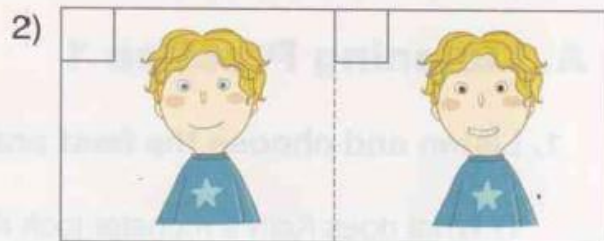
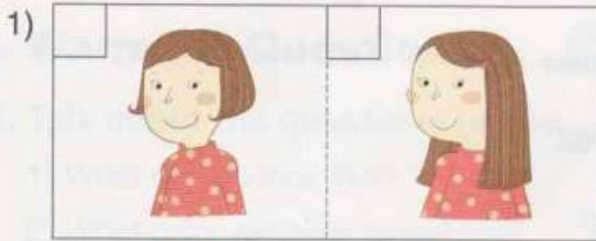
4)



C. Listening Practice 3

cd1
Track 20

1. Listen and check the correct picture.



2. Listen again and circle the word you hear from each sentence.

- | | | | |
|----|----------|-------|----------|
| 1) | short | curly | long |
| 2) | green | brown | blue |
| 3) | short | long | straight |
| 4) | straight | curly | long |

D. Listening Practice 4

cd1
Track 21

1. Listen and circle true or false.

1) They are looking at a family album.

True | False

2) The monster has a big mouth, a small nose and long hair.

True | False

3) Sally's monster is very cute.

True | False

4) Kelly wants to keep the picture.

True | False



Step 4 Let's Listen and Write



1. Listen to the first dialog again and fill in the blanks.

CD1

Track 18

Mr. Wilson: What does your _____, Kelly?

Kelly : My monster has _____ and _____

Mr. Wilson: _____ about _____, John?

John : My monster has _____, _____, and _____

Mr. Wilson: They sound _____ !