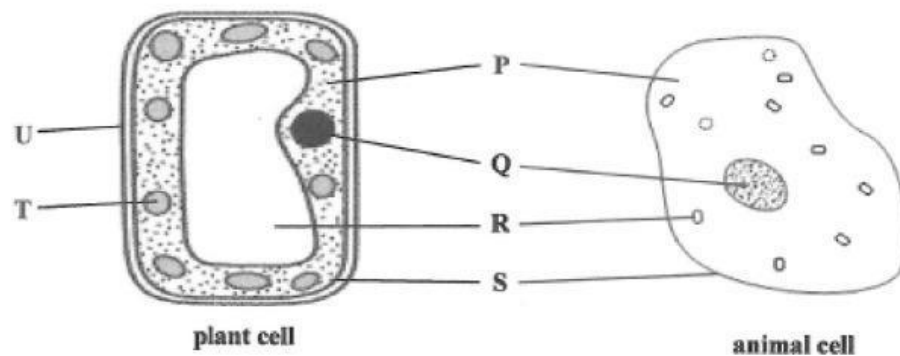


1. Study the diagrams of various cells and then answer the questions which follow.



- (a) (i) Give the name of the two structures labelled **T** and **U** that are found in the plant cell but not in the animal cell.

**T** \_\_\_\_\_

**U** \_\_\_\_\_

[2]

- (ii) State the function of structures **T** and **U**.

Function of **T** \_\_\_\_\_

\_\_\_\_\_

Function of **U** \_\_\_\_\_

\_\_\_\_\_

[2]

- (iii) Explain why **R** is larger in the plant cell than in the animal cell.

\_\_\_\_\_

\_\_\_\_\_

[1]

- (b) The diagrams show examples of specialised plant cells.



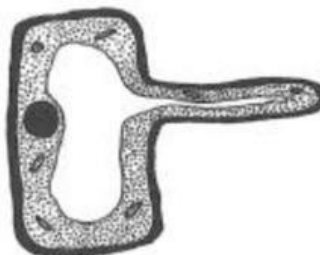
Guard cell



Palisade cell



Phloem cell



Root hair cell



Xylem cell

Identify the cell from the diagram that best fits each function.

- (i) Absorbs minerals by increasing the surface area \_\_\_\_\_
- (ii) Transports water and mineral salts from roots to leaves \_\_\_\_\_
- (iii) Allows dissolved sugars to move from one cell to another \_\_\_\_\_
- (iv) Allows gas exchange and controls water loss within the leaf \_\_\_\_\_
- (v) Absorbs light so that photosynthesis can take place \_\_\_\_\_

[5]

TOTAL MARKS [10]