

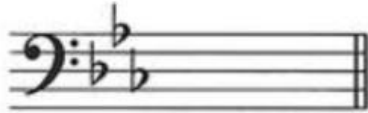
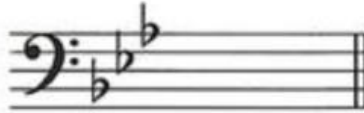
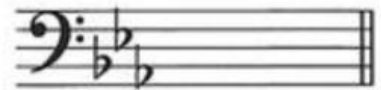
B minor

a

☐☐☐

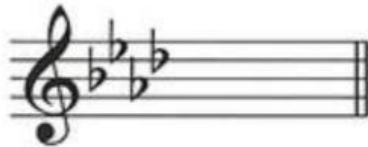
C minor

b

☐☐☐

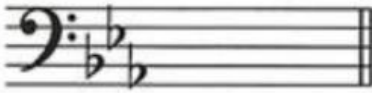
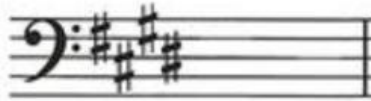
F# minor

c

☐☐☐

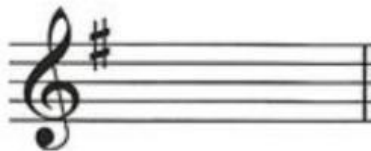
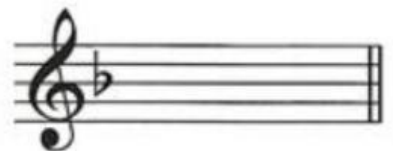
C# minor

d

☐☐☐

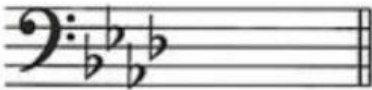
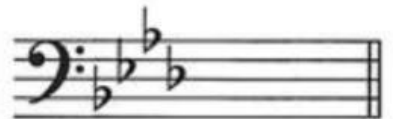
G minor

e

☐☐☐

F minor

f

☐☐☐

- | | | | |
|----------|---|------|-------|
| a | G minor is the relative minor of B \flat major. | TRUE | FALSE |
| b | F \sharp minor has two sharps in its key signature. | TRUE | FALSE |
| c | F major and F minor have the same key signature. | TRUE | FALSE |
| d | E major is the relative major of C \sharp minor. | TRUE | FALSE |
| e | The tonic of a minor key is the 5th degree of its relative major. | TRUE | FALSE |