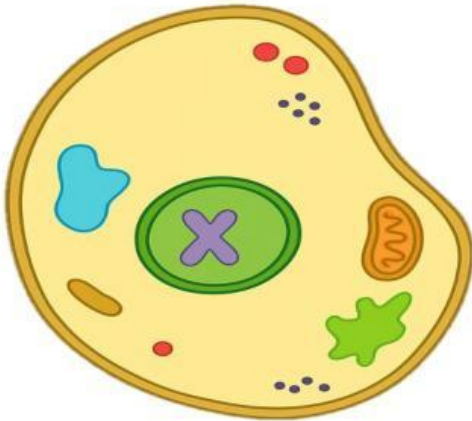


# THE ORGANELLES OF AN ANIMAL CELL (THE PARTS OF A CELL)

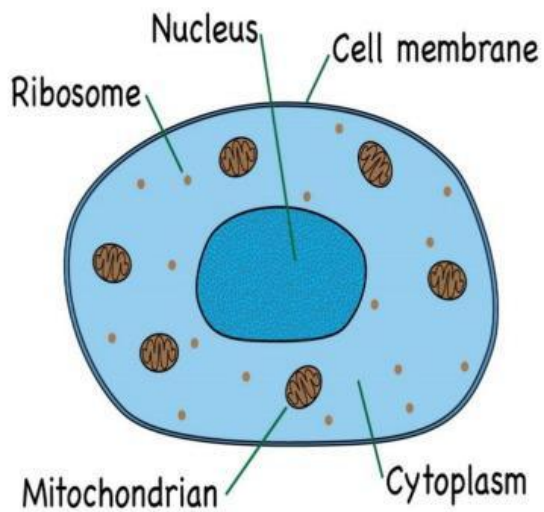
## LESSON 1

# The Organelles of A Cell



An organelle is a tiny part inside a cell that has its own special job to help the cell work properly. Think of it as a little “cell organ” with a specific job.

# PARTS OF A CELL

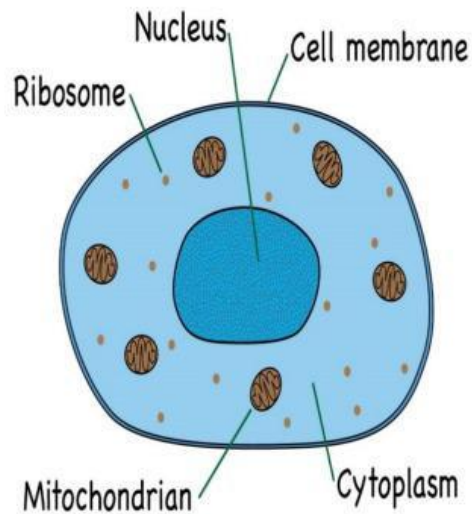


## The Nucleus

The **nucleus** is called the brain of the cell. It is found in the middle of the cell and controls all cell activities.

Some activities the nucleus does is: Control how the cell grows and what it does when it is in trouble.

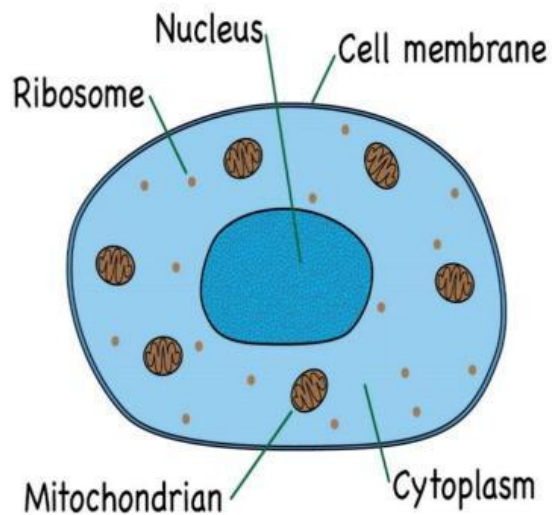
# PARTS OF A CELL



## The Cell Membrane

The cell membrane is the part of the cell that controls what enters and leaves a cell.

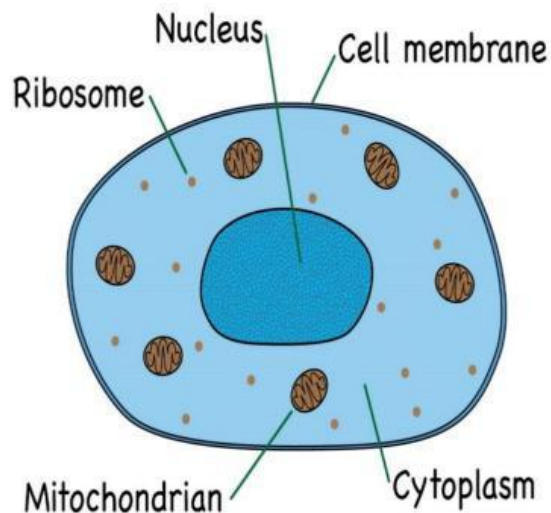
# PARTS OF A CELL



## The Cytoplasm

The **cytoplasm** is a jellylike substance that other parts of the cell will float in.

# PARTS OF A CELL

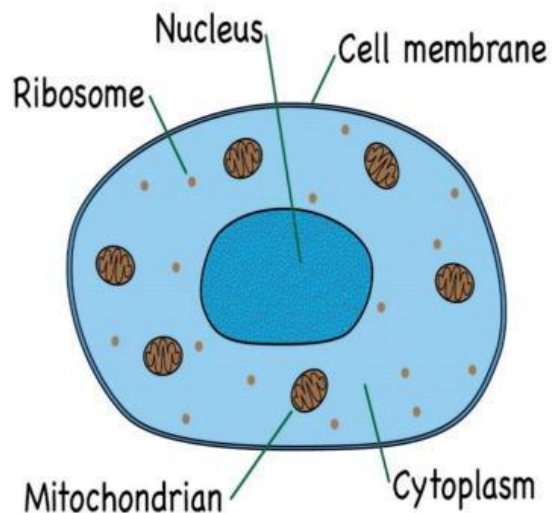


## The Ribosome

The main job of ribosomes is to build proteins. Proteins are like the cell's LEGO bricks—they help cells grow, repair themselves, and do all the jobs they need to do.



# PARTS OF A CELL



## The Mitochondrion

This is the **powerhouse** of the cell! It's like a **power plant**. It takes food and turns it into energy for the cell to use.

The plural word is mitochondria

**NOW WATCH A SIMPLE  
VIDEO ON CELLS**

BASIC PARTS OF A CELL

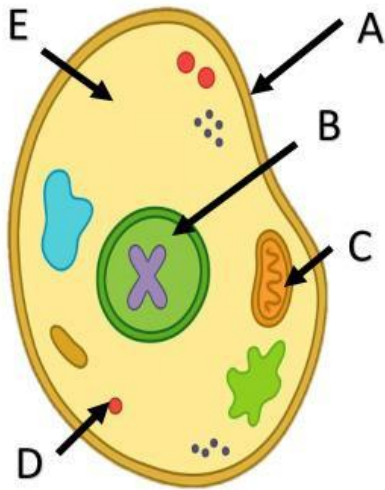
 **LIVEWORKSHEETS**



# **LABEL THE PARTS OF AN ANIMAL CELL**

Use the words below

Ribosome – Chromosome – Nucleus – Mitochondrion – Cell Membrane



A -

B -

C -

D -

E -