

**Solve It!**

Check the correct clock.

- (a) Wyatt worked in the garden for 25 minutes. He finished gardening at 5:00 p.m. What time did Wyatt start gardening?



- (b) Riley started playing the guitar at midday. She played the guitar for 18 minutes. What time did Riley stop playing the guitar?



- (c) Jordan started fishing at 4 o'clock. He caught his first fish 46 minutes later. What time did Jordan catch his first fish?



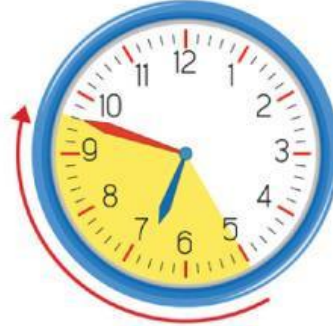
- (d) Chelsea watched a 30-minute television show. She finished watching the show at 8:15 p.m. What time did the show start?



**Let's Practice**

1. Fill in the blanks.

(a) How many minutes are there from 6:25 a.m. to 6:48 a.m.?



23 minutes

(b) How many minutes are there from 1:20 p.m. to 1:48 p.m.?



28 minutes

(c) How many minutes are there from 8:55 a.m. to 9:10 a.m.?



15 minutes

(d) How many minutes are there from 12:35 a.m. to 12:56 a.m.?



21 minutes

(e) How many minutes are there from 11:05 p.m. to 11:23 p.m.?



18 minutes

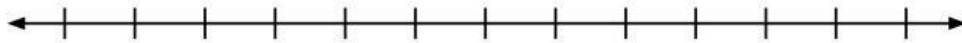
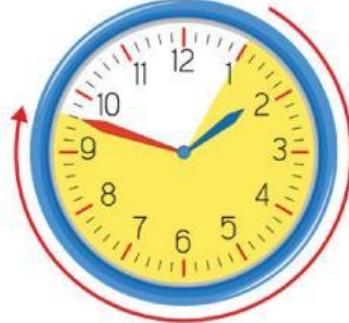
(f) How many minutes are there from 10:10 a.m. to 10:36 a.m.?



26 minutes

2. Fill in the blanks. Use the time line to count on.

(a) How many minutes are there from 1:05 p.m. to 1:48 p.m.?



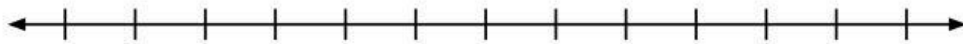
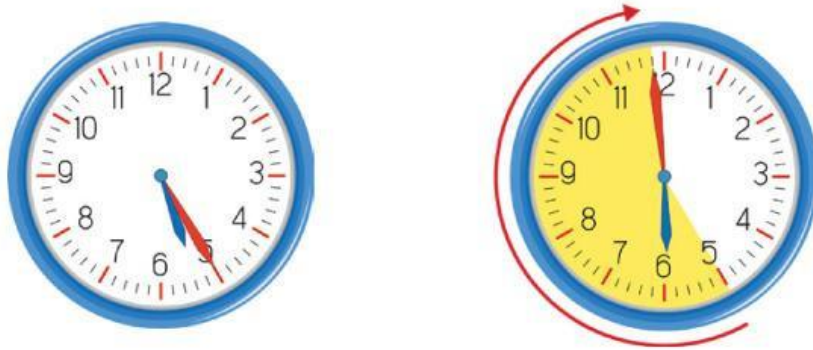
43 minutes

(b) How many minutes are there from 3:15 a.m. to 3:56 a.m.?



41 minutes

(c) How many minutes are there from 5:25 p.m. to 5:59 p.m.?



34 minutes

3. How many minutes are there between the times?
Fill in the blanks.

(a) 3:45 a.m. and 3:52 a.m. **7**

(b) 2:45 p.m. and 12:59 p.m. **14**

(c) 1:05 a.m. and 1:43 a.m. **38**

(d) 4:20 a.m. and 4:42 a.m. **22**

4. Fill in the blanks.

(a) What time is it 14 minutes after 2:30 p.m.? **2:44 p.m.**

(b) What time is it 41 minutes after 8:10 p.m.? **8:51 p.m.**

(c) What time is it 19 minutes after 9:05 p.m.? **9:24 p.m.**

(d) What time is it 38 minutes after 11:10 p.m.? **11:48 p.m.**

5. Fill in the blanks.

- (a) Riley leaves her home at 7:25 a.m.
She arrives at school at 7:52 a.m.
How long did it take Riley to get to school?



It took Riley **27** minutes to get to school.

- (b) Science class starts at 2:10 p.m. and finishes at 2:55 p.m.
How long is the science class?



The science class is **45** minutes long.

- (c) Ethan started jogging at 12:25 p.m.
He jogged for 34 minutes.
What time did Ethan finish jogging?



Ethan finished jogging at **12:59 p.m.**

- (d) Chelsea goes into her garden at 5:05 p.m.
She plays with her ducks for 52 minutes, then goes inside.
What time does Chelsea go inside?



Chelsea goes inside at **5:57 p.m.**