

# Multiple Choice Questions?



Choose the correct answer from the given ones :

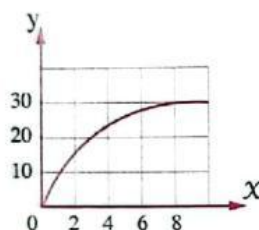
1 Which of the following represents a proportion ?

- (a) The price of 3 kg of bananas is 54 LE , and the price of 5 kg of bananas is 80 LE
- (b) 10 goals out of 12 attempts , and 12 goals out of 18 attempts.
- (c) Reading 3 books in 2 months , and reading 9 books in 6 months.
- (d) 144 pulses in 2 minutes , and 210 pulses in 3 minutes.

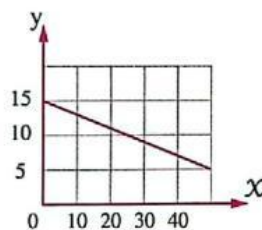
2 Magdy can run 75 meters in 25 seconds. If he maintained his speed , which proportion you can use to find the time (X) he needs to run 300 meters ?

- (a)  $\frac{75}{25} = \frac{X}{300}$
- (b)  $\frac{75}{25} = \frac{300}{X}$
- (c)  $\frac{25}{X} = \frac{300}{75}$
- (d)  $\frac{75}{X} = \frac{300}{25}$

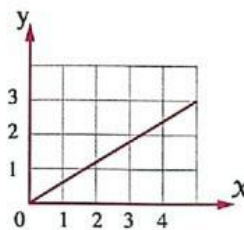
3 Which of the following graphs represents a proportion ?



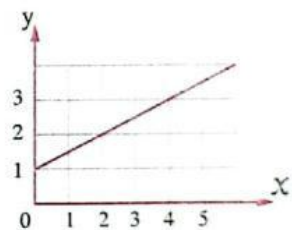
(a)



(b)



(c)



(d)

4 Team X loses against team Y in basketball with a ratio of 3 : 4. Which of the following could be the score of the game ?

- (a) 10 goals for team X and 12 goals for team Y
- (b) 4 goals for team X and 16 goals for team Y
- (c) 16 goals for team X and 12 goals for team Y
- (d) 30 goals for team X and 40 goals for team Y

5 Which of the following ratios is equal to  $\frac{16}{64}$  ?

- (a)  $\frac{1}{4}$
- (b)  $\frac{4}{8}$
- (c)  $\frac{14}{48}$
- (d)  $\frac{64}{16}$

6 If  $\frac{35}{21} = \frac{X}{3}$  , then what is the value of X ?

- (a) 3
- (b) 5
- (c) 7
- (d) 9

- 7 Walid travels 320 km in 2.5 hours. How much time is needed to travel 64 km if he maintains the same speed ?

(a) 5 hours                      (b)  $\frac{1}{2}$  hour                      (c)  $\frac{1}{4}$  hour                      (d) 2 hours

- 8 Two pieces of cheese contain 230 calories. How many calories are in 5 pieces of the same type of cheese ?

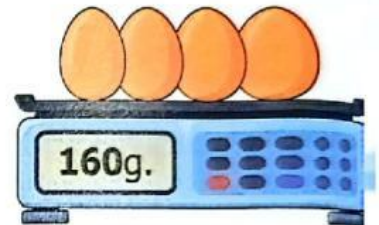
(a) 500                      (b) 550                      (c) 575                      (d) 615

- 9 Which of the following pairs of ratios does not represent a proportion ?

(a)  $\frac{1}{8}$  ,  $\frac{4}{32}$                       (b)  $\frac{3}{2}$  ,  $\frac{9}{4}$                       (c)  $\frac{1}{5}$  ,  $\frac{16}{80}$                       (d)  $\frac{9}{18}$  ,  $\frac{21}{42}$

- 10 The opposite figure shows the mass of 4 eggs. If the eggs are of equal mass, what is the mass of 5 eggs ?

(a) 40 grams                      (b) 165 grams  
(c) 250 grams                      (d) 200 grams



- 11 Ahmed needs to buy tuna cans. If 3 cans of tuna costs 126 LE , then how much will he spend to buy 5 cans ?

(a) 42 LE                      (b) 84 LE                      (c) 126 LE                      (d) 210 LE

- 12 In a family party , if the ratio between number of children and number of adults is 2 : 5 , then which of the following can be the number of children and adults ?

(a) 64 children and 160 adults                      (b) 46 children and 192 adults  
(c) 20 children and 51 adults                      (d) 8 children and 30 adults

- 13 If  $\frac{2}{5} = \frac{x}{15}$  , then what is the value of  $4 + x$  ?

(a) 6                      (b) 8                      (c) 10                      (d) 12

- 14 **Creative thinking :**

If 15 % of  $x$  equals 20 % of  $y$  , then which of the following is equal to  $x : y$  ?

(a) 5 : 4                      (b) 3 : 2                      (c) 4 : 3                      (d) 3 : 4