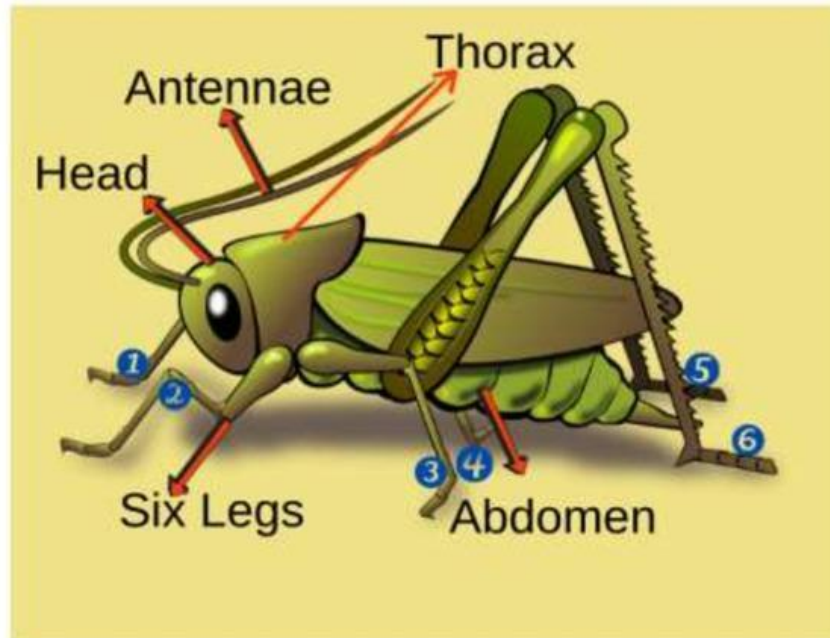


DIAGRAM DESCRIPTION

The diagram below shows the anatomy of a grasshopper.

Instructions: Complete the passage by choosing the correct word (A, B, C, or D) for each blank.



The grasshopper's body is divided into three main sections: the 1 _____, the thorax, and the abdomen. On the head, there are two large compound 2 _____, which allow the insect to detect movement, and a pair of 3 _____ that help it sense its surroundings.

The thorax forms the middle section of the body and is responsible for locomotion. Attached to it are two pairs of 4 _____, as well as three pairs of 5 _____, giving the grasshopper excellent jumping ability. These legs are strong and flexible, allowing the insect to escape from predators quickly.

The abdomen makes up the final part of the body. It is segmented and contains vital 6 _____ organs. Small openings called spiracles are found here, allowing the insect to 7 _____. Finally, the long abdomen assists in reproduction and in producing the insect's distinctive 8 _____.

1.	A) antennae	B) thorax	✓ head	D) tail
2.	A) ears	B) eyes	C) claws	D) toes
3.	A) nostrils	B) wings	C) antennae	D) tails
4.	A) claws	B) wings	C) legs	D) spines
5.	A) legs	B) tails	C) antennae	D) teeth
6.	A) digestive	B) musical	C) visual	D) playful
7.	A) breathe	B) jump	C) eat	D) see
8.	A) smell	B) sound	C) color	D) claw