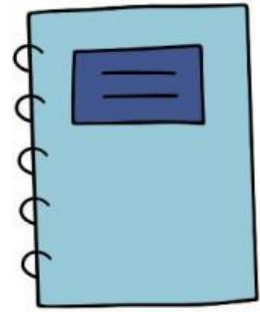


# PREPOSITIONS OF TIME



1 Complete the sentences with IN, ON, or AT.

- My birthday is \_\_\_ July.
- We have class \_\_\_ Monday morning.
- She usually wakes up \_\_\_ 6:30 a.m.
- They go skiing \_\_\_ winter.
- He was born \_\_\_ 2002.
- Let's meet \_\_\_ Friday afternoon.
- The concert starts \_\_\_ 8:00 p.m.
- The flowers bloom \_\_\_ spring.
- I visited London \_\_\_ Christmas.
- The meeting is \_\_\_ the morning.

2 Choose the correct option.

- We play football (in / on / at) Sundays.
- The shop closes (in / on / at) midnight.
- She will graduate (in / on / at) 2026.
- They usually travel (in / on / at) summer.
- The movie starts (in / on / at) 9:15.

3 What has been your favorite part of this unit?

- My sister was born on 1998.

-----  
• I usually take a nap in the afternoon of Monday.

-----  
• We eat dinner in 7:00 p.m.

-----  
• The exam is at July.

-----  
• They met at Christmas Day.  
-----