



Name:

Class:

Mark: /20 =

END OF UNIT 6 TEST

1 Write down one word to match each of these descriptions. Choose your words from this list:

equator	hibernation	hemisphere	camouflage	sunrise
nocturnal	migration	summer	autumn	sunset

a Half of the Earth.

b The point when the Sun disappears below the horizon.

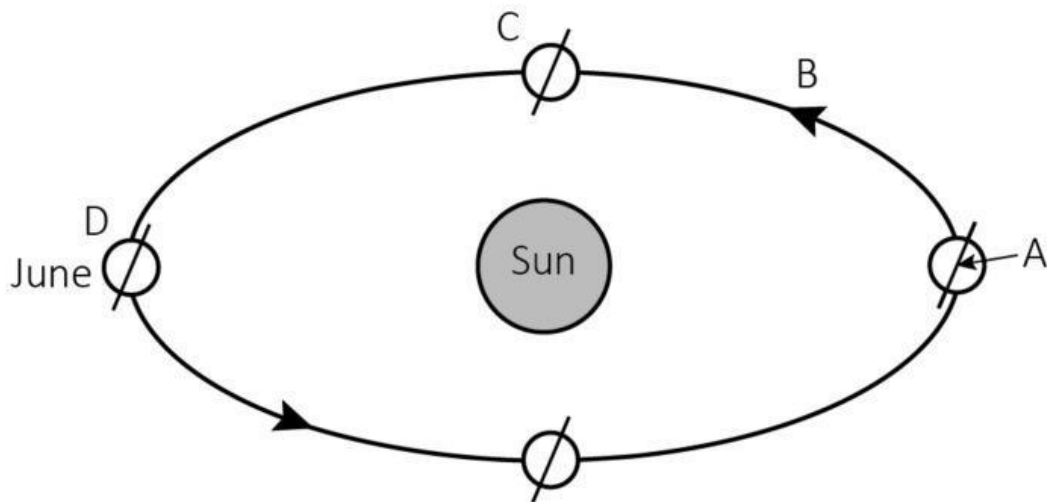
c A period during cold months when an animal goes into a dormant state.

d A colouring almost the same as the surroundings, so that an animal is difficult to see.

e An animal that is active at night.

f The season when leaves turn yellow, then red, then brown and then fall off the trees.

2



a Identify the imaginary line at A.

b Identify the line B.

c What shape is the line you named in question b?

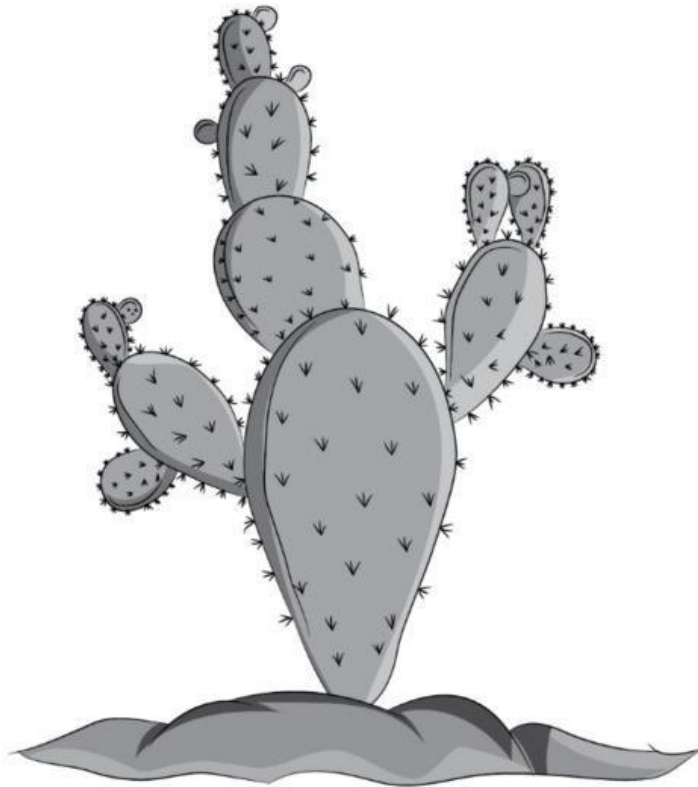
d When Earth is in position D, which hemisphere is having summer?

e Explain your answer to question d.

f During which month is the Earth in position C?

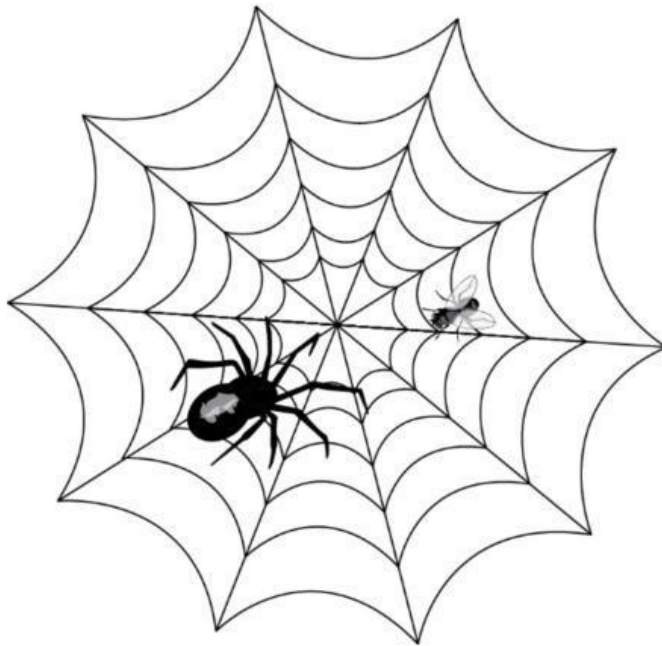
g How long is day and night everywhere on Earth in position C?

3



a Describe the environment that this plant is adapted to.

b Describe two ways in which the plant is adapted to this environment.



a Identify the predator.

b Identify the prey.

c Describe one adaptation the predator has.

d Describe one adaptation the prey has.

THE END