

LISTENING PLACEMENT TEST

Time: 40 minutes

Total Score: ____/30

LISTENING PART 1

Questions 1-8

- For questions 1-8 you will hear eight short recordings.
- For each question, mark **one** letter (A, B or C) for the correct answer.

Example:

Who is Emily going to write to?

- A the staff
 - B the supplier
 - C the clients
- The answer is A.

- You will hear the 8 recordings TWICE.

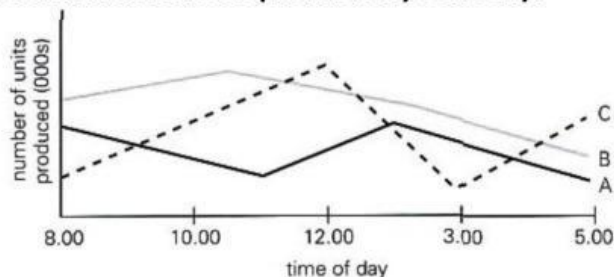
1. When will the meeting be?

- A 12 May
- B 14 May
- C 15 May

2. Which office suppliers are they going to use?

- A Office Network
- B Excel Products
- C A-Grade Service

3. Which line shows productivity correctly?



4. What is the correct length?

- A 420mm
- B 452mm
- C 540mm

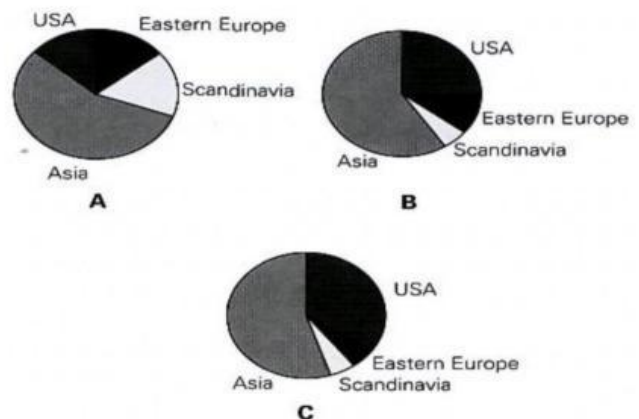
5. What does the woman want to do about the meeting?

- A cancel it
- B postpone it
- C bring it forward

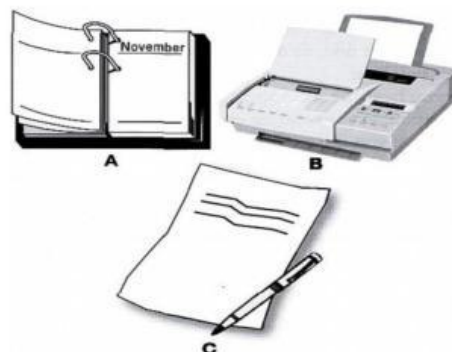
6. What time will Mr. Johnstone arrive?

14:45 16:50 21:10
A B C

7. Which part shows where the company's goods are made?



8. Which task is urgent?



LISTENING PART 2

Questions 9-15

- Look at the notes below. Some information is missing.
- You will hear an engineering manager giving a secretary some information about a quotation.
- For each question **9-15**, fill in the missing information in the numbered space using a **word**, **numbers** or **letters**.
- You will hear the conversation TWICE.

Stylex Engineering	
<u>Quotation for Service Contract</u>	
Customer name:	(9) <i>International</i>
Quotation reference:	(10)
Number of machines:	(11) <i>in packing department</i>
<u>Charges</u>	
Annual service:	(12) £ <i>1</i> (incl. tax)
Emergency work	
Call-out charge:	(13) £
New waiting time for call-out:	(14) <i>hours</i> (guaranteed)
Payment terms:	(15) <i>days</i>

LISTENING PART 3

Questions 16-22

- Look at the notes about the launch of a new clothing company.
- Some information is missing.
- You will hear part of a welcoming talk by the company's Managing Director.
- For each question **16-22**, fill in the missing information in the numbered space using **one** or **two** words.
- You will hear the talk TWICE.

- You have 10 seconds to read through the notes.
- Now listen, and fill in the missing information.

COMPANY LAUNCH EVENT

Notes

New company:

Name: (16) Clothing Ltd

Staff change:

David Shaw to become: (17)

New premises:

Location: close to (18)

Biggest area of expansion: (19)

Future staff facility: (20)

Future company plans:

Next new product range: (21) clothes

New market: (22)

LISTENING PART 4

Questions 23-30

- You will hear a radio interview with George Johnson, Managing Director of Media-X, an organization which invests in internet companies.
 - For each question **23-30**, mark one letter (A, B or C) for the correct answer.
 - You will hear the conversation TWICE.
 - You have 45 seconds to read through the questions.
 - Now listen, and mark A, B or C.
-
- | | |
|--|--|
| <p>23 The name Media-X was chosen for the company because</p> <ul style="list-style-type: none"> A. it presented a serious image. B. it was connected with technology. C. it seemed easy to remember. | <p>27 Approximately how many companies in total does George help each year?</p> <ul style="list-style-type: none"> A. 100 B. 200 C. 300 |
| <p>24 George Johnson started to invest in internet companies because the internet</p> <ul style="list-style-type: none"> A. already had considerable educational value B. was increasingly popular in Europe. C. was becoming easier to use. | <p>28 When choosing between proposals, George first considers</p> <ul style="list-style-type: none"> A. the experience of the directors. B. the need for the product or service. C. the financial background of the company. |
| <p>25 What was George's first job?</p> <ul style="list-style-type: none"> A. bank employee B. economics lecturer C. software programmer | <p>29 Media-X helps companies by providing advice on</p> <ul style="list-style-type: none"> A. market research. B. technical support. C. pricing strategy. |
| <p>26 George's father helps him by</p> <ul style="list-style-type: none"> A. advising him on investments B. providing him with suitable office space C. giving him financial support | <p>30 Which of these UK companies has expanded into other countries?</p> <ul style="list-style-type: none"> A. NetTrade.com B. TravelDeals.com C. OrderFree.com |

That's the end of Listening test.