

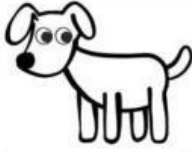


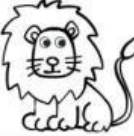
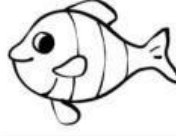













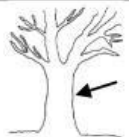



**PATHWAY TO MATH 2
PRACTICE TEST**

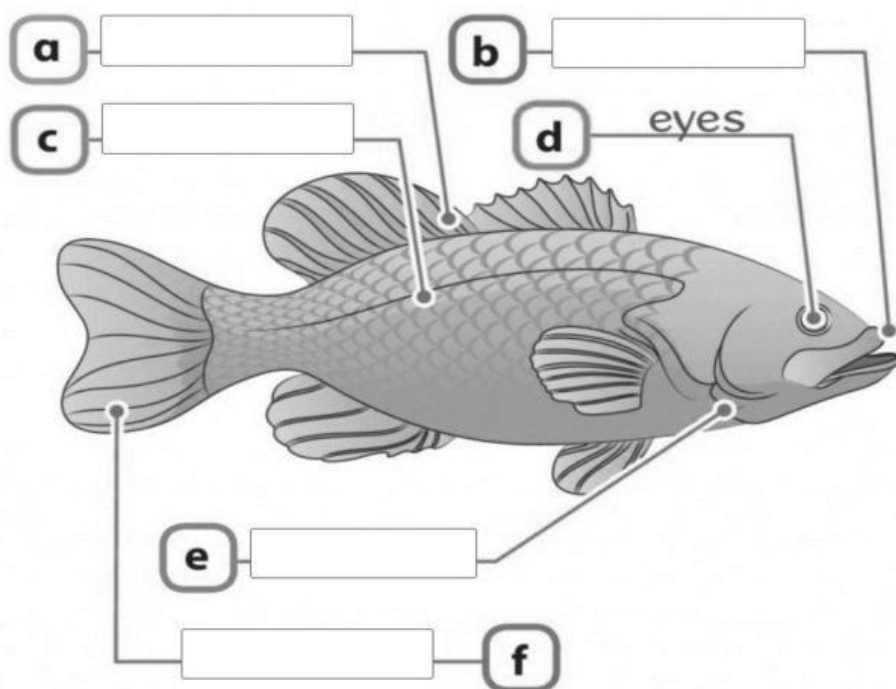
I. Look and write A (Aquatic animal/ plant), T (Terrestrial animal/ plant).

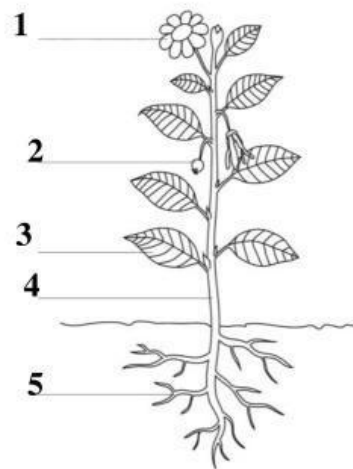
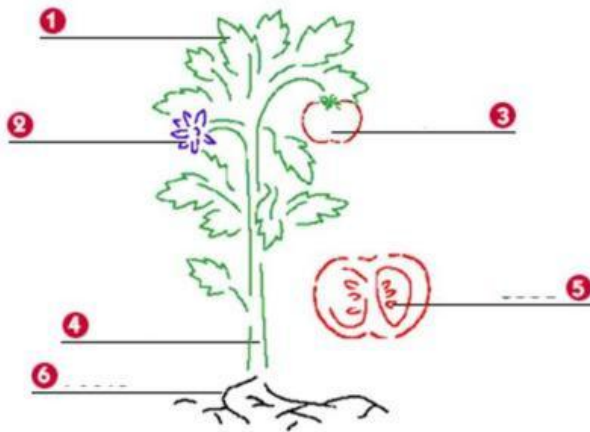
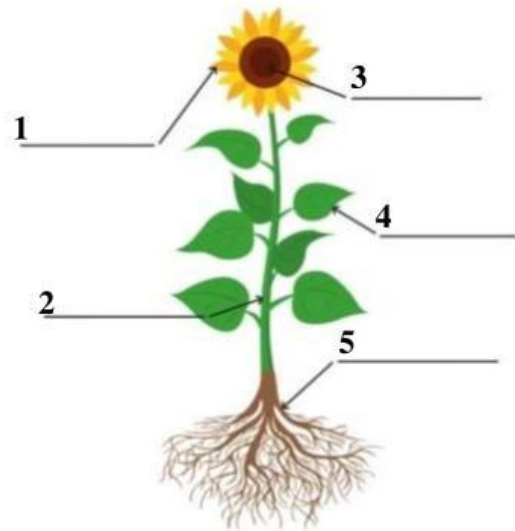
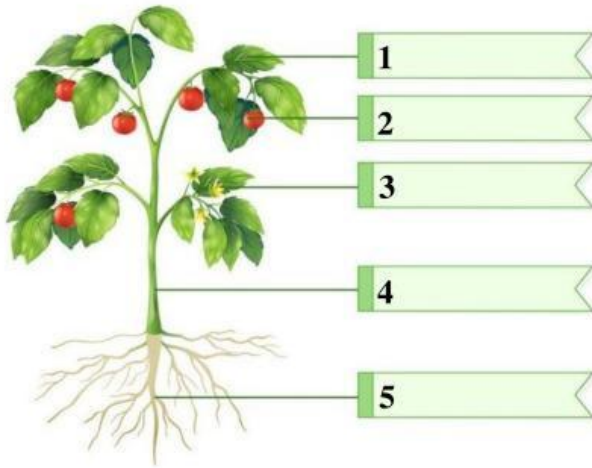
II. Look and write the parts of a tree/ plant.

III. Look and Fill in the blanks



IV. Look and Fill in the blanks



V. Read and fill in the blanks.

roots – terrestrial (x2) – aquatic (x2) – breathe –
swim – run – gills – see – walk – land – water- nose

1. Dolphins are _____ animals.
2. Tigers are _____ animals.
3. Fish live in water and they _____ through their _____.
4. Dogs live on land and they breathe through their mouth and _____.
5. Cats have good eyes so they can _____ in the dark.
6. A goldfish has a tail and fins to help them _____ in water.
7. Terrestrial animals _____ and _____ by their legs.
8. Aquatic plants live in _____.
9. Terrestrial plants live on _____.
10. Seaweeds are _____ plants.
11. Apple trees are _____ plants.
12. A water lily has long _____ that grows from the river bed.