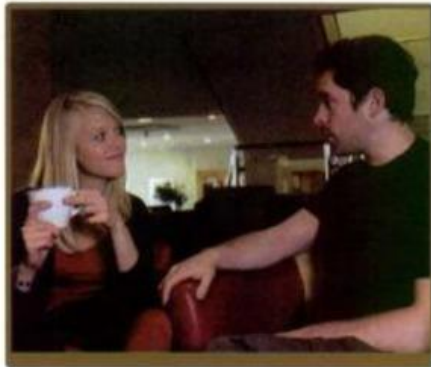


American English File ¹

Third Edition

1 A FREE MORNING



- a 7.19 Watch or listen to Rob and Jenny planning their free morning. What's the problem?



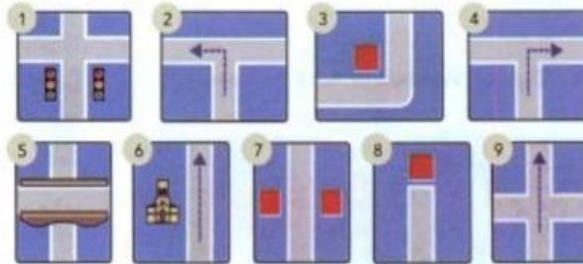
- b Watch or listen again. Complete the sentences with a word, a name, or a number.
- 1 Rob suggests that they go _____.
 - 2 He says that they can _____ bikes.
 - 3 _____ calls _____.
 - 4 Rob needs to interview an _____.
 - 5 Rob asks if he can do the interview on _____.
 - 6 Rob and Jenny arrange to meet at _____ o'clock outside the Tate Modern.

Glossary

(the) Tate Modern a famous art gallery in London

2 VOCABULARY directions

- a Match the phrases and pictures.



- | | |
|---|------------------------|
| on the <u>corner</u> /'kɔːnə/ | a bridge /brɪdʒ/ |
| at the traffic lights /'træfɪk laɪts/ | across (from) /ə'krɒs/ |
| go straight <u>ahead</u> /streɪt ə'hed/ | turn left /tɜːn left/ |
| go past the church /pɑːst/ | turn right /tɜːn raɪt/ |
| at the end of the street | |

- b 7.20 Listen and check.

- c Cover the phrases and look at the pictures. Say the phrases.

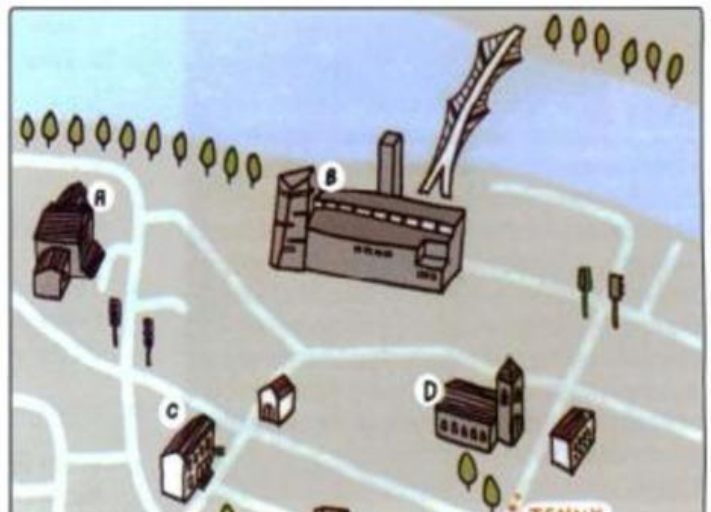
American and British English

American English
go straight ahead
across from

British English
go straight on
opposite

3 ASKING FOR DIRECTIONS

- a 7.21 Jenny is trying to find the Tate Modern. Watch or listen. Is it A, B, C, or D? How many people does she ask?





4 JENNY AND ROB GO SIGHTSEEING

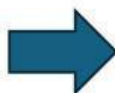
- a 7.23 Watch or listen to Rob and Jenny. Circle the correct option.

- 1 The Millennium / London Bridge is only for people.
- 2 It was the first new bridge over the Thames in 100 / 200 years.
- 3 Jenny doesn't like the theater. / Shakespeare.
- 4 Jenny can / can't meet Daniel for lunch.
- 5 There's a great gift shop / restaurant on the top floor of the Tate Modern.
- 6 The Tate Modern was a power / train station until 1981.



- b Watch or listen again. Complete the You hear phrases.

You say	You hear
Excuse me, please. Where's the Tate Modern?	1 _____, I don't live here.
Excuse me. Is the Tate Modern near here?	The Tate Modern? It's near here, but I don't know exactly 2 _____. Sorry.
Thank you.	
Excuse me. Can you tell me the way to the Tate Modern, please?	Yes, of course. Go straight on. Go 3 _____ the church. Then turn 4 _____ at the traffic lights. And it's at the end of the street.
Sorry, could you say that again, please?	Yes, go straight on. ...You can't 5 _____ it!
Thank you.	



b. ANSWERS

1. _____
2. _____
3. _____
4. _____
5. _____