



ASKING FOR DIRECTIONS



Scan to review worksheet

Expemo code:
1FN9-81L4-BF7

1

Vocabulary

Write the words below each picture.

a bus stop

a cinema (UK)/a movie theatre (US)

a shopping centre (UK)/mall (US)

a town square

a car park (UK)/a parking lot (US)

a mosque

a supermarket

a train station

a church

a museum

a theatre

traffic lights



1. _____



2. _____



3. _____



4. _____



5. _____



6. _____



7. _____



8. _____



9. _____



10. _____



11. _____



12. _____

What is there in your town? Make sentences with 'There is/are/isn't/aren't ...'



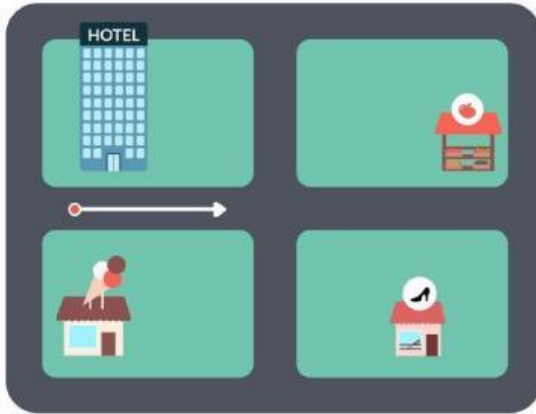
2 Directions

Match the words and pictures. In pairs, cover the words and test your partner.

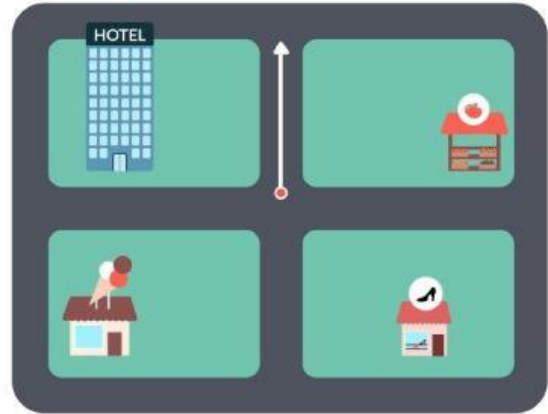
at the traffic lights
on the corner

go past the hotel
turn left

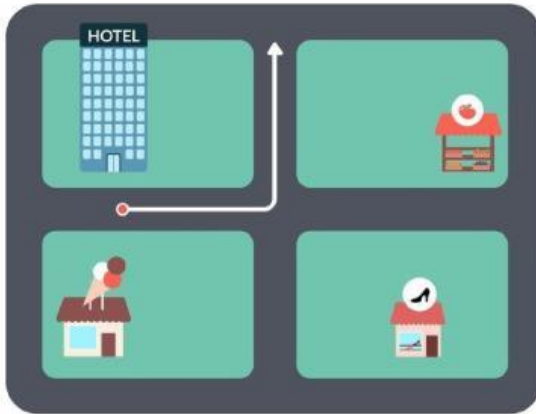
go straight on
turn right



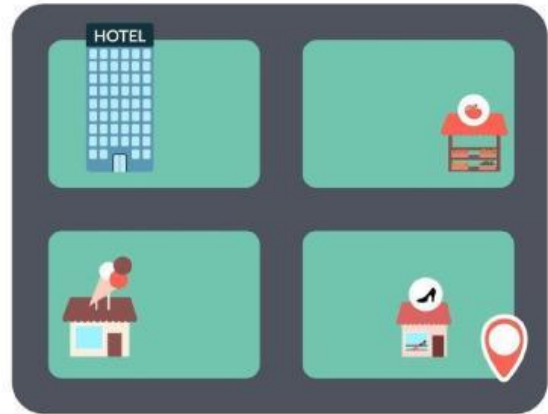
1. _____



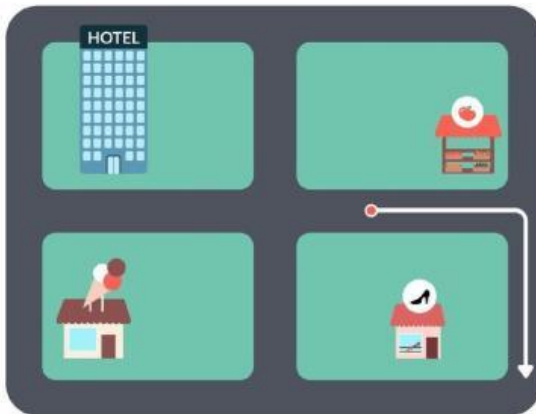
2. _____



3. _____



4. _____



5. _____



6. _____



3 Listening

Claire is in a new town. She is lost, and her phone is out of battery. Listen to the dialogues and write 'museum', 'bank' and 'supermarket' on the map or next to the letters below. Claire's starting position on each map is marked with a person.





ASKING FOR DIRECTIONS

Audio



- a. _____
 b. _____
 c. _____

Now listen to the dialogues again or watch the videos to check your answers.



4

Asking for directions

Listen again and complete the dialogues below.



Dialogue: -1-

Claire: Excuse me. Is there a bank _____¹?

Passer-by: Yes. There's a bank on the corner.

Claire: Thank you.

Passer-by: You're welcome.

Dialogue: -2-

Claire: Excuse me. Is there a supermarket _____²?

Passer-by: Yes. It's on Chapel Street.

Claire: How do I get there?

Passer-by: Go _____³. Go past the movie theater. Turn left at the traffic lights. It's _____⁴.

Dialogue: -3-

Claire: Excuse me, I'm looking for the museum.

Passer-by: Go straight ahead and _____⁵ at the end of this street. It's on the right.

Claire: Is it far?

Passer-by: No, it's near. About 5 minutes on foot.

Claire: Thank you.

Dialogue: -4-

Claire: Excuse me, can you tell me the way to the town square?

Passer-by: I'm sorry, I'm not _____⁶.



5

Role play

In pairs, practice asking for and giving directions. Use the map below. Student A: ask for the hotel and cafe. Student B: ask for the parking lot and post office.

Student A: ask for the hotel and cafe.

Student B: ask for the parking lot and post office.

