

ACD Indicator for MetaTrader 4 Download - Free - [TF Lab]



The **ACD indicator**, developed by **Mark Fisher**, is a technical analysis tool in **MetaTrader 4** that is used to identify potential trends and measure the strength of market trends.

The **ACD system** is based on identifying the **market's Opening Range (OR)** and using it to determine key trading levels. The opening range is usually the first 30 minutes to one hour of trading.

After deciding on the **OR**, traders can identify points **A** and **C** derived from the **OR** and make trading decisions. These levels are above or below the **OR**, which the market must reach for a potential trend to break.

Indicator Table

Indicator Category	Price Action - Levels - Supply and Demand
Platforms	MetaTrader 4
Trading Skills	Intermediate
Indicator Types	Range - Breakout
Timeframe	5 minutes - 15 minutes - 30 minutes
Trading Style	Scalping - Day Trading
Trading Instruments	Forex – Stocks - Commodities

In the image below, the price chart of the **EURUSD** currency pair is shown in a 15-minute time frame. A buy signal is initially issued when the price moves above the **A up** level and stabilizes for 7 minutes, indicating the start of an **uptrend** and entry into a **buy trade**. A sell signal is also issued when the price breaks below the **A down** level and stabilizes below it for 7 minutes, indicating the start of a **downtrend** and entry into a **sell trade**.



Buy and Sell Signals of the ACD Indicator

Overview

The **ACD trading strategy** is a breakout strategy that performs best in volatile or strongly trending markets, such as crude oil (Brent) and stocks. If the price is above the **Pivots**, the trend is bullish; if it is below the **Pivots** and **MT4 levels indicator**, the trend is bearish. The **ACD strategy** is a technical tool used to measure the balance between **Supply and Demand** in the market. By analyzing the volume and price of trades, this indicator helps traders identify the trend's strength and suitable entry and exit points.

Bullish Signal Conditions of the Indicator (Bullish Setup)

In the image below, the price chart of **Gold (XAUUSD)** is shown in a 15 minute time frame. When the **A up** line is broken, it is recommended to wait for a while to ensure it is not a **Fake Breakout** and the price stabilizes above this line. Eventually, the price should stabilize on the **A up** level for 7 minutes, after which you can enter a **buy position**.

Take Profit and Stop Loss for Buy Trades of the ACD Indicator

After entering the trade, the best stop loss you can choose is below the **A down** line. The appropriate **Reward to Risk** ratio for this strategy is 1, which you can use to set your take profit.



Buy Signal of the ACD Indicator

Bearish Signal Conditions of the Indicator (Bearish Setup)

In the image below, the price chart of **Texas Oil (WTI)** is shown in a 30-minute time frame. When the **A down** line is broken, it is recommended to wait for a while to ensure it is not a **Fake Breakout** and the price stabilizes below this line. Eventually, the price should stabilize below the **A down** level for 7 minutes, after which you can enter a **sell position**.

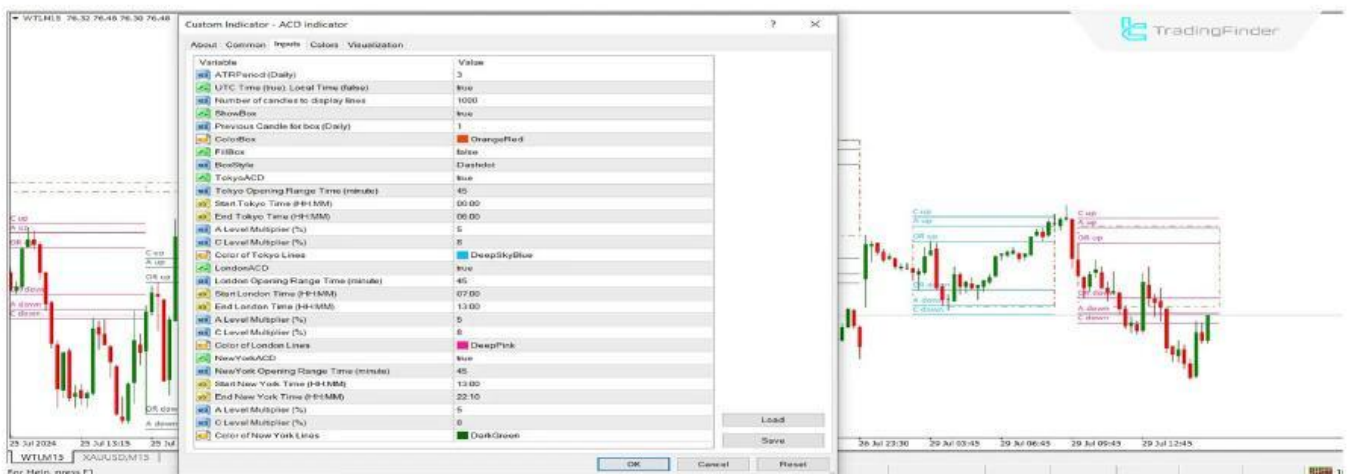
Take Profit and Stop Loss for Sell Trades of the ACD Indicator

After entering the trade, the best stop loss you can choose is above the **A up** line. The appropriate **Reward to Risk** ratio for this strategy is 1, which you can use to set your take profit.



Sell Signal of the ACD Indicator

ACD Indicator Settings



ACD Indicator Settings

- ⚡ **ATR Period (Daily):** Default value for calculations in the daily time frame is 3
- ⚡ **UTC Time (true) Local Time (false):** Set **TRUE** to consider UTC time
- ⚡ **Number of candles to display lines:** Considers 1000 candles back for calculations
- ⚡ **ShowBox:** Set to **True**
- ⚡ **Previous Candle for box (Daily):** Considers the previous daily candle for calculations
- ⚡ **ColorBox:** **OrangeRed** color displayed on the chart
- ⚡ **FillBox:** Set to **false** for a hollow box
- ⚡ **BoxStyle:** Set to **Dashdot**
- ⚡ **TokyoACD:** Set to **True**
- ⚡ **Tokyo Opening Range Time (minute):** Consider **High** and **Low** in the first 45 minutes of the

Tokyo session

- ⚡ **Start Tokyo Time (HH):** Start of the Tokyo session is at **00:00**
- ⚡ **End Tokyo Time (HH):** End of the Tokyo session is at **06:00**
- ⚡ **A Level Multiplier (%):** The percentage distance of the **A** lines is 5
- ⚡ **C Level Multiplier (%):** The percentage distance of the **C** lines is 8
- ⚡ **Color of Tokyo Lines:** Tokyo session color is **blue** or as desired
- ⚡ **LondonACD:** Set to **True**
- ⚡ **London Opening Range Time (minute):** Consider **High** and **Low** in the first 45 minutes of the

London session

- ⚡ **Start London Time (HH):** Start of the London session is at **07:00**
- ⚡ **End London Time (HH):** End of the London session is at **13:00**
- ⚡ **A Level Multiplier (%):** The percentage distance of the **A** lines is 5
- ⚡ **C Level Multiplier (%):** The percentage distance of the **C** lines is 8
- ⚡ **Color of London Lines:** London session color is **pink** or as desired
- ⚡ **NewYorkACD:** Set to **True**
- ⚡ **New York Opening Range Time (minute):** Consider **High** and **Low** in the first 45 minutes of the

New York session

- ⚡ **Start New York Time (HH):** Start of the New York session is at **13:00**
- ⚡ **End New York Time (HH):** End of the New York session is at **22:10**
- ⚡ **A Level Multiplier (%):** The percentage distance of the **A** lines is 5
- ⚡ **C Level Multiplier (%):** The percentage distance of the **C** lines is 8
- ⚡ **Color of New York Lines:** New York session color is **yellow** or as desired

Summary

The **ACD indicator**, an **indicator in MetaTrader 5**, can identify high-potential levels for trading as a strategy. It can also be used for different time frames and trading styles, helping determine market direction by comparing the current price to the **Opening Range (OR)**. Additionally, this indicator provides suitable entry and exit points for trades.

Sources:

1- ACD Indicator for MT4:

<https://tradingfinder.com/products/indicators/mt4/acd-free-download/>

2- ACD Indicator for MT5:

<https://tradingfinder.com/products/indicators/mt5/acd-free-download/>

3- ACD Indicator on YouTube:

<https://youtu.be/bKBZsxbYtI0>

4- All Indicators:

<https://tradingfinder.com/products/indicators/>



[Website](#)



[Indictor link](#)



[Youtube Channel](#)



[Instagram](#)