

92 Talking about animals

1 What do you know about animals?

Answer these questions:

- Which one of these is not a wild animal?
lion / elephant / goat / rhinoceros
- Which one of these is not a domestic animal?
cow / fox / sheep / pig
- Which one of these isn't usually kept as a pet?
dog / cat / rabbit / camel
- Which one of these is not carnivorous?
lion / bear / panda / crocodile
- Which one of these is not a predator?
tiger / gorilla / leopard / eagle
- Which one of these is not an endangered species?
penguin / dolphin / whale / panda

2 What animals do

Match the animals with the verbs and expressions:

- | | |
|------------|------------------------------------|
| 1. Birds | a. hunt in a pack, howl at night. |
| 2. Dogs | b. make honey, buzz, sting. |
| 3. Cats | c. roar. |
| 4. Spiders | d. hiss, slither along the ground. |
| 5. Wolves | e. bark, wag their tails. |
| 6. Bears | f. build nests, lay eggs. |
| 7. Lions | g. make webs to catch flies. |
| 8. Bees | h. hibernate during the winter. |
| 9. Snakes | i. purr, scratch. |

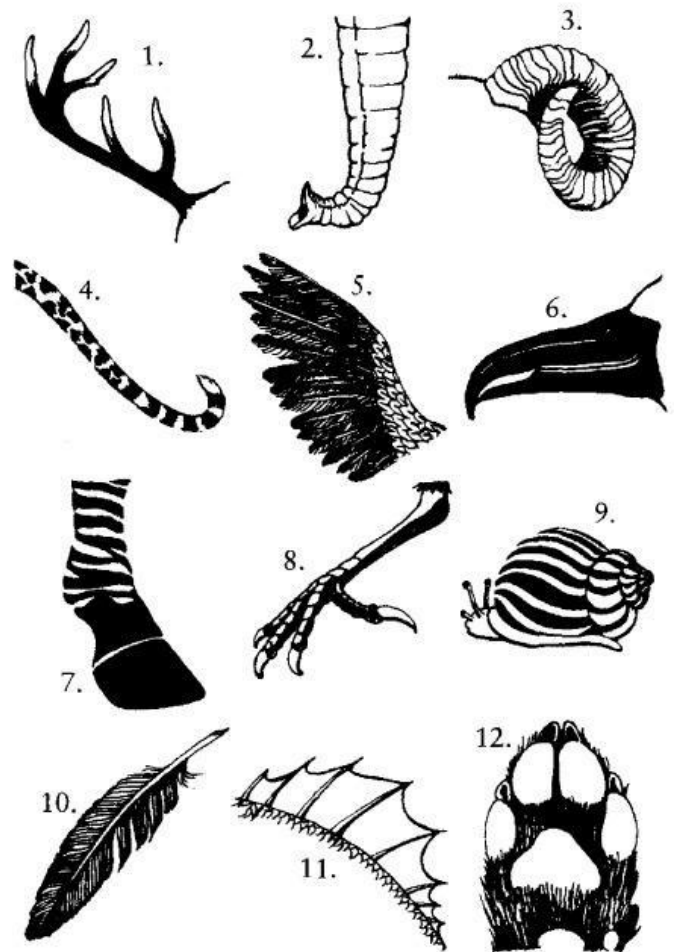
Now use the correct form of some of the verbs above in the following sentences:

- My dog his tail when he's happy.
He's a good guard dog. He always
. when somebody comes to the door.
- I got by a bee last week. It was really painful.
- I looked down and there was a huge snake
. towards me!
- That cat can be quite vicious sometimes. She
. me when I tried to pick her up just now.
- Some birds have their nests in the trees outside my bedroom window. They make a terrible noise.

3 Parts of animals

Match the words with the numbers in the pictures:

- | | | |
|-------|--------|---------|
| wing | beak | feather |
| tail | antler | paw |
| claw | hoof | shell |
| trunk | fin | horn |



4 Groups of animals

Match the words on the left with the animals on the right to make animal groups:

- | | |
|----------------|-------------------|
| 1. a herd of | a. fish |
| 2. a pack of | b. whales |
| 3. a swarm of | c. wolves |
| 4. a shoal of | d. birds or sheep |
| 5. a flock of | e. cattle |
| 6. a school of | f. bees |