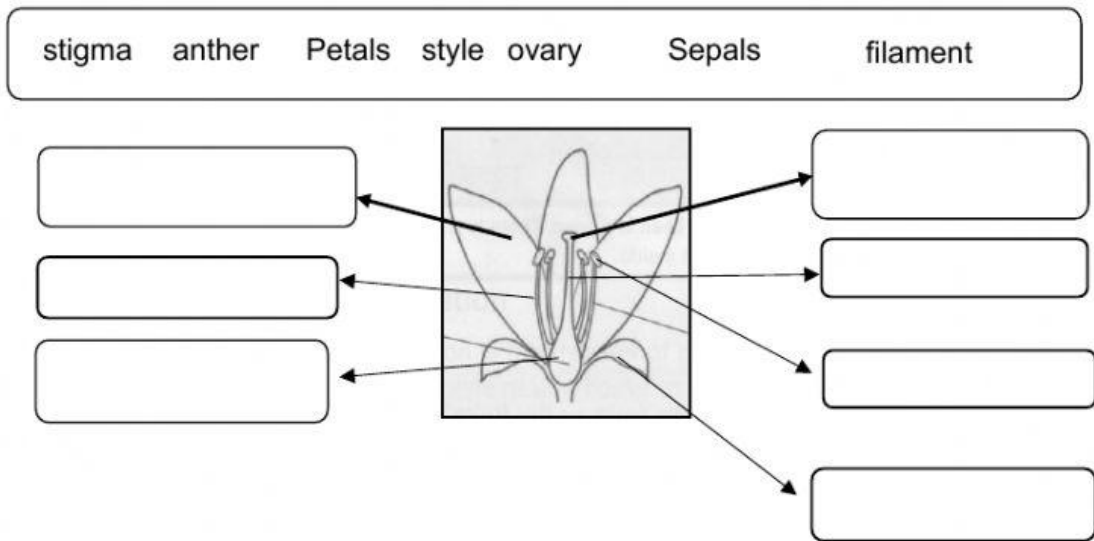


1. Complete the diagram and the text.



**FLOWERS:** Flowers have different parts. The \_\_\_\_\_ are small green leaves that form the \_\_\_\_\_. The \_\_\_\_\_ are coloured leaves which form the \_\_\_\_\_. The \_\_\_\_\_ are the male parts of the flower and produce \_\_\_\_\_. The \_\_\_\_\_ is the female part of the flower.