



Science

Stage 3

First Semester

Cambridge Primary Progression Test

Name

Class

Date

45 minutes

No additional materials are needed.

INSTRUCTIONS

- Answer **all** questions.
- Write your answer to each question in the space provided.
- You should show all your working on the question paper.

INFORMATION

- The total mark for this paper is **25**.
- The number of marks for each question or part question is shown in brackets [].

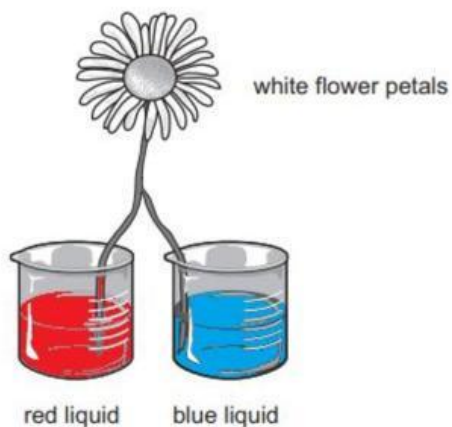
1. Ajay and Magda grow some plants in soil.

(a) What part of their plants takes up water?

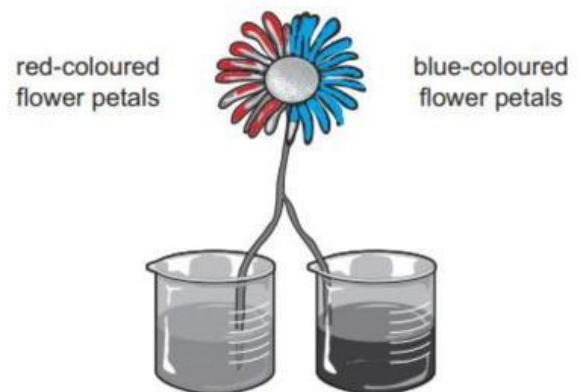
[1]

(b) They cut the flowers off and investigate the plants.

This is what they do.



After one day, this is what happens.



Finish this sentence.

The coloured liquids move up to the flower petals through

the

[1]

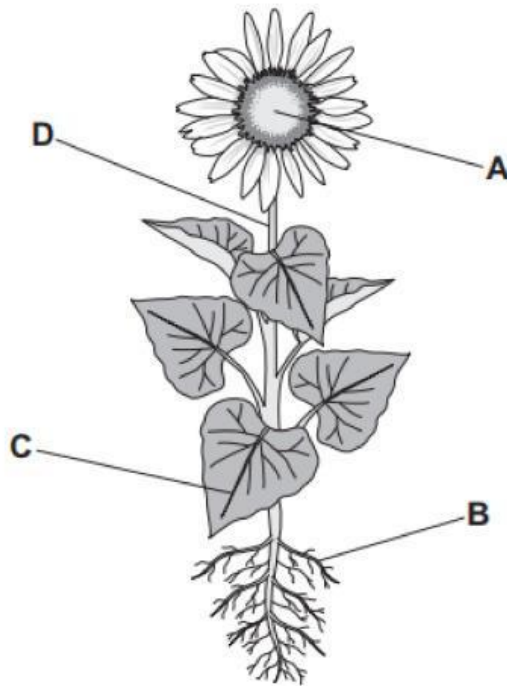
(c) Ajay and Magda repeat their investigation.

This time they only use yellow liquid.

Predict what will happen after one day.

[1]

2. (a) The picture shows a plant.



Draw a straight line from each **labelled part** to its **function**.

labelled part	function
A	makes food
B	makes seeds
C	takes in water
D	transports water

[2]

- (b) Plants need water to be healthy.

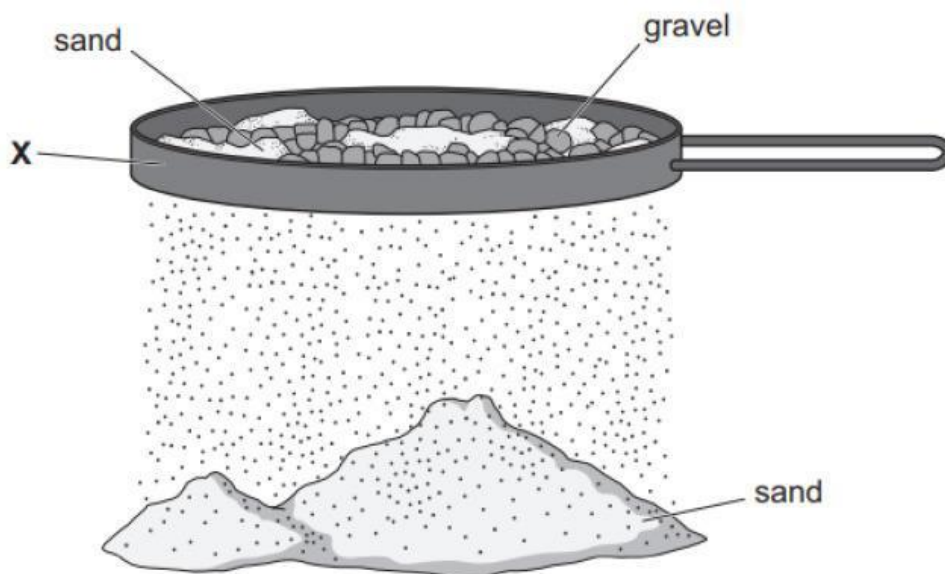
Write down **two other** conditions plants need to be healthy.

- 1
- 2

[2]

3. Oliver separates a mixture of sand and gravel.

The diagram shows the equipment he uses.



- (a) Circle the name of the piece of equipment labelled X.

evaporating dish

filter funnel

sieve

thermometer

[1]

- (b) Explain why **only** the sand passes through the piece of equipment labelled X.

.....

..... [2]

-
4. Sea water is a mixture of water, sand and salt.

Yuri can see the sand in the sea water, but he **cannot** see the salt.

Yuri wants to separate the mixture of sea water.

The diagram shows the equipment he uses.

(a) Label the diagram.

Choose words from the list.

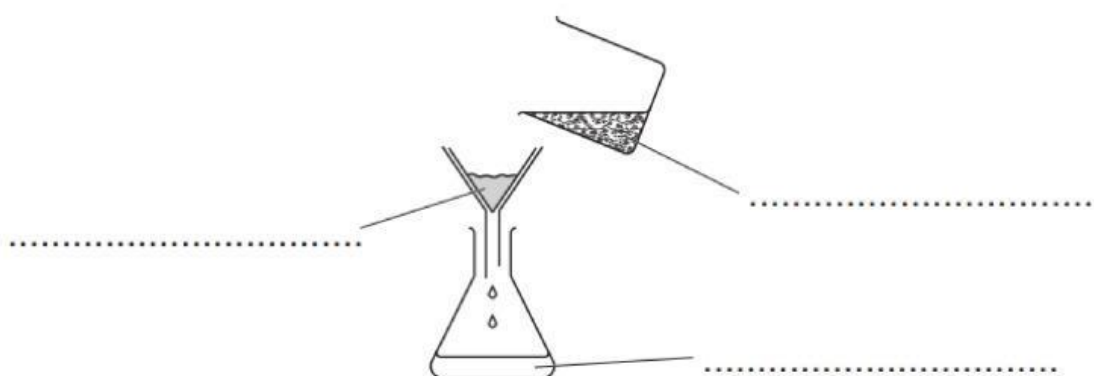
salt

water

sand

salt water

sea water



[3]

(b) Write down the name of this separation method.

..... [1]

(c) Complete the sentence about this separation method.

The sand is separated because it is in water. [1]

-
5. Lily has two mixtures, **A** and **B**.

Mixture **A** contains sand and big lumps of copper.

Mixture **B** contains steel powder and copper powder.

Write down the equipment Lily uses to separate each mixture.

Mixture **A**

Mixture **B** [2]

-
6. Mike and Oliver investigate how temperature affects how fast a substance dissolves.

Mike and Oliver:

- measure 50 ml of water at 20°C
- add a sugar cube to the water and start the stopclock
- record the time it takes for the sugar cube to completely dissolve
- repeat the experiment at different temperatures.

Here are their results.

temperature of water in °C	time taken for sugar cube to dissolve in seconds
20	300
30	250
40	200
50
60	100

- (a) Predict the time taken for the sugar cube to dissolve at 50°C.

Write down your answer in the table.

[1]

- (b) Write down the temperature that dissolves the sugar the fastest.

..... °C [1]

7. Safia has four identical healthy plants.



She

- puts the plants at different distances from the window
- gives them the same amount of water each day
- measures the height of the plants after six weeks.

Here are her results.

distance from the window in cm	final height in cm
10	25
20	22
30	19
40	18

Complete the sentences.

(a) The tallest plant is cm from the window. [1]

(b) This plant grows the tallest because it gets
..... [1]

8. These pictures show mixtures and methods of separating mixtures.

Draw a line from each **mixture** to the correct **method of separation**.

mixture



mixed nuts



peas in boiling water



sand and water



iron and copper powder

method of separation



colander



fingers



bar magnet



filter funnel

[2]

9. Jamila has pictures of different things.



~~stone~~



bone



scissors



~~bee~~



tree



plastic bottle

(a) Write down the name of each thing in the correct group.

Two have been done for you.

living	once alive	never lived
bee		stone

[1]

(b) Write down **one** life process that all living things do.

.....

[1]