

## Unit 8 test

### Vocabulary

#### 1 Read and write the letter.

1 Earth \_\_\_\_

3 moon \_\_\_\_

5 astronaut \_\_\_\_

2 rocket \_\_\_\_

4 telescope \_\_\_\_

6 universe \_\_\_\_



A



B



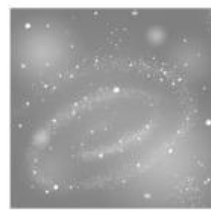
C



D



E



F

/ 6

#### 2 Choose words from the box to complete the sentences.

crew oxygen planet solar system space station

1 Jupiter is a \_\_\_\_\_.

2 The \_\_\_\_\_ are the team who fly a rocket.

3 You need \_\_\_\_\_ to breathe in space.

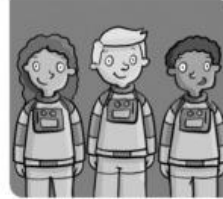
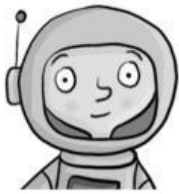
4 A \_\_\_\_\_ is a place of work for astronauts.

5 The sun is part of the \_\_\_\_\_.

/ 5

## Grammar

### 3 Read and choose A or B.



- 1 She ... an astronaut because she's wearing a space suit.  
A ☐ can't be                      B ☐ must be
- 2 That planet ... Earth because it has rings.  
A ☐ could be                      B ☐ can't be
- 3 When I'm older, I ... to space.  
A ☐ might travel                      B ☐ can't travel
- 4 Astronauts ... if there is no oxygen.  
A ☐ must breathe                      B ☐ can't breathe
- 5 We ... many more planets and stars in the future.  
A ☐ may discover                      B ☐ can't discover

/5

### 4 Read and circle the correct relative pronoun.

- 1 A crew is a group of astronauts **which** / **that** flies rockets into space.
- 2 A space station is a place **where** / **that** astronauts live and work in space.
- 3 Saturn is a planet **which** / **who** has rings.
- 4 Neil Armstrong was the first astronaut **who** / **which** landed on the moon.
- 5 An observatory is a place **where** / **that** scientists study space.

/5



### Reading

#### 5 Read and circle **T** (true) or **F** (false).

- Chris** Hi, Mum! We watched a film about space travel today. We saw a rocket launch. It orbited the Earth and we saw it fly into space before it landed. It was amazing!
- Mum** Where did it land? Did it land on another planet?
- Chris** First, it landed on a space station. After that, some of the crew went to the moon.
- Mum** Wow, that must be fun and interesting, too.
- Chris** Yes, but an astronaut's job is difficult. There's no gravity up there, so when the crew is in the space station, they fly around. Also, when there was a problem with an engine, they didn't come back to Earth. One of the astronauts had to repair it in space!

- |   |       |
|---|-------|
| 1 The rocket went around the Earth.               | T / F |
| 2 The rocket landed on the moon first.            | T / F |
| 3 All of the astronauts went to the moon.         | T / F |
| 4 Chris doesn't think an astronaut's job is easy. | T / F |
| 5 They returned to Earth to repair the engine.    | T / F |

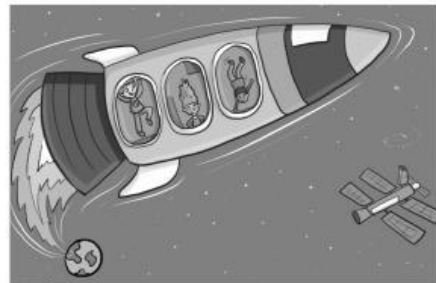
/ 5

### Writing

#### 6 Look, read and choose A, B or C.

##### Students in space

These are the three student astronauts <sup>1</sup> \_\_\_ will fly into space on Lunar 1 tomorrow. The rocket has got a new engine <sup>2</sup> \_\_\_ is very big. The engine needs a lot of fuel; it <sup>3</sup> \_\_\_ very strong and powerful to fly into space. The crew will launch the rocket into space, <sup>4</sup> \_\_\_ they will orbit the Earth three times to take photographs of our planet. They will then land on the space station. Because there is no gravity, it is difficult for the astronauts to eat on the space station. Lunar 1 is the first rocket <sup>5</sup> \_\_\_ will fly to Jupiter before the astronauts come back to Earth.

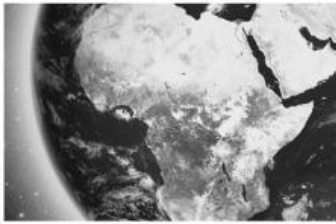


- |                                      |                                     |                                   |
|--------------------------------------|-------------------------------------|-----------------------------------|
| 1 A <input type="checkbox"/> which   | B <input type="checkbox"/> who      | C <input type="checkbox"/> where  |
| 2 A <input type="checkbox"/> who     | B <input type="checkbox"/> where    | C <input type="checkbox"/> that   |
| 3 A <input type="checkbox"/> must be | B <input type="checkbox"/> can't be | C <input type="checkbox"/> may be |
| 4 A <input type="checkbox"/> where   | B <input type="checkbox"/> who      | C <input type="checkbox"/> which  |
| 5 A <input type="checkbox"/> who     | B <input type="checkbox"/> that     | C <input type="checkbox"/> where  |

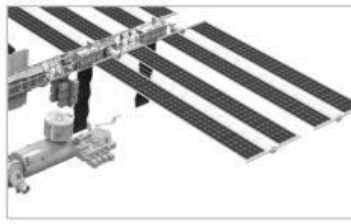
/ 5

### Listening

7 8 Listen and and circle *T* (true) or *F* (false).



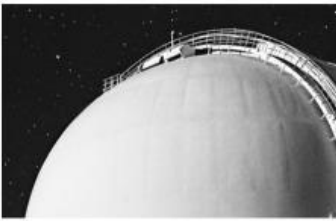
1 T/F



2 T/F



3 T/F



4 T/F



5 T/F

/5

### Speaking

8 Look, listen and answer the questions.



- What can you see in these pictures? Name three things.
- Do you think the crew is in space in picture 2? Why / why not?

/4

How do you feel about the test?



happy



OK



disappointed



The best thing about your test is

\_\_\_\_\_.

You can improve by

\_\_\_\_\_.

Test score

40