

LEVEL 2

Resource: Primary computing 2, ICT & Robotics

Q NO. 1: Circle T for True answer or F for False answer:

- | | |
|---|-------|
| 1. An algorithm is a set of instructions. | T / F |
| 2. Instructions (steps) must be in correct order inside the algorithm. | T / F |
| 3. Test means to check something. | T / F |
| 4. When an algorithm is precise, it includes all the information that people need to follow it. | T / F |
| 5. Split tasks into smaller parts to make it easier to follow. | T / F |
| 6. ScratchJr is used to draw | T / F |

Q NO.2: Find the bug in the algorithm

- Getting dressed algorithm:
 1. Put on your trousers.
 2. Put on your T-shirt.
 3. Put on your shoes.
 4. Put on your socks.
- Brush your teeth algorithm:
 1. Go to the washroom.
 2. Brush your teeth.
 3. Put toothpaste

4. Wash your mouth

• Make a sandwich algorithm:

1. Spread the cheese

2. Put the slice of bread

3. Put some cucumber

4. Put another slice of bread

Q NO. 3: Put the correct word in the correct place :

Forgetting- instructions - Bug - Wrong order-Precise algorithm -Debugging

1. _____ is a mistake in the algorithm.

2. _____ is the process of finding and fixing bugs

3. Splitting the algorithm into smaller steps can help us to make _____.

4. _____ a set of words or pictures that tell you what to do or how to make something.

5. Two of the most common bugs in algorithms are:

A) _____ to include instructions

B) Putting instructions in the _____

Q NO. 4: Put hardware and software in the correct place.



1.Mouse



2.Paint program



3.Keyboard



4.Controller

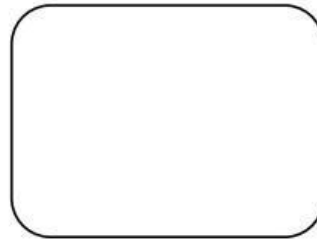


5.Games

Hardware



Software

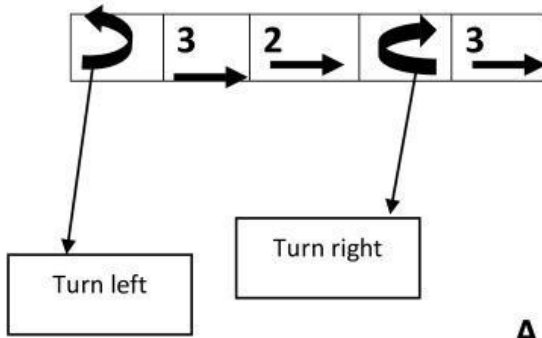


Q NO. 5: Determine the address of the shapes:

The	●	Is on
The	★	Is on
The	▲	Is on
The	⬠	Is on
The	♥	Is on

	1	2	3	4	5	6
A						⬠
B			▲			
C	♥					
D					★	
E						
F		●				

Q NO. 6: Determine the Cat's position after executing the following commands:



	1	2	3	4	5	6
A						
B						
C						
D						
E						
F						
G						

Cat's position