

Potrafię wskazać drogę i o nią zapytać.

Is it far?



Tourist: Er ... Excuse me ... I'm looking for the Science Museum.
Amy: The Science Museum? Yes, it's ...
Tom: Hey, I know where it is, it's in Green Street.
Tourist: Where's Green Street? Is it far?
Tom: No, it isn't. Go straight on, then turn right ...
Amy: You mean turn left, Tom.
Tom: Oh yes, turn left. Go past the cinema and the museum is on the left. It's opposite the park.
Amy: But it's on the right, Tom.
Tom: What's on the right?
Amy: The museum, Tom. You don't know your left from your right!



1 **2.58** Listen and read. Where does the tourist want to go?

2 **2.59** Listen and repeat.

Speaking Directions

Asking for directions

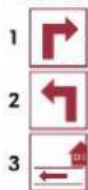
Excuse me. Where's North Street?
 I'm looking for a library.
 How can I get to the Science Museum?
 Is it far?

Giving directions

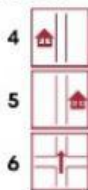
It's in/on Green Street.
 Go straight on.
 Go past the cinema.
 Turn left. / Turn right.
 It's on the left. / It's on the right.

3 Look at the pictures and give directions.

Nagraj swoje odpowiedzi.



1 Turn right.



4

5

6

4 **2.60** Choose the correct answers. Write them in your notebook. Then listen and check. Find the library on the map in Exercise 5. Is it A, B or C?

Boy: Excuse me. I'm looking ¹ for / to the library.

Girl: There's a library ² in / at North Street.

Boy: Where's North Street? Is it far?

Girl: No, it isn't. Go straight ³ on / in, past the hotel. Then ⁴ go / turn right. The library is ⁵ in / on the left, opposite the bank.

Boy: Thanks!

1 for

5 **2.61** Listen and follow the directions. Find the stadium and the supermarket on the map.

