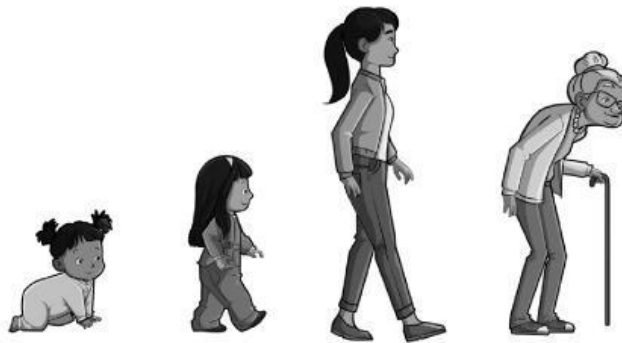




Name ..... Class .....

Total marks  /14

1 Draw a line from the word to the correct person in the picture.



toddler

[1]

2 How many children are in the photograph? How many adults are there?  
Write the numbers in the table.



Number of children	Number of adults

[2]



3 Draw a line between each animal and the life process it is showing. One is done for you.

move

breathe

grow



eat

drink

reproduce

[2]

4



Tick the hygiene action we should always do after coughing, sneezing or blowing our nose.

[1]

Circle the hygiene action we should always do to protect our teeth and keep them clean.

[1]



5 Draw a line between each adult parent and its offspring.



[2]

6 This family are exercising in the photograph.

Which food group should they eat in their diet to give them energy to exercise? Tick the correct box.

Bread and cereals

Meat and fish

Fruit and vegetables



[1]

What will happen if they do not use up all of the energy from the food they eat? Tick the correct box.

Lose weight

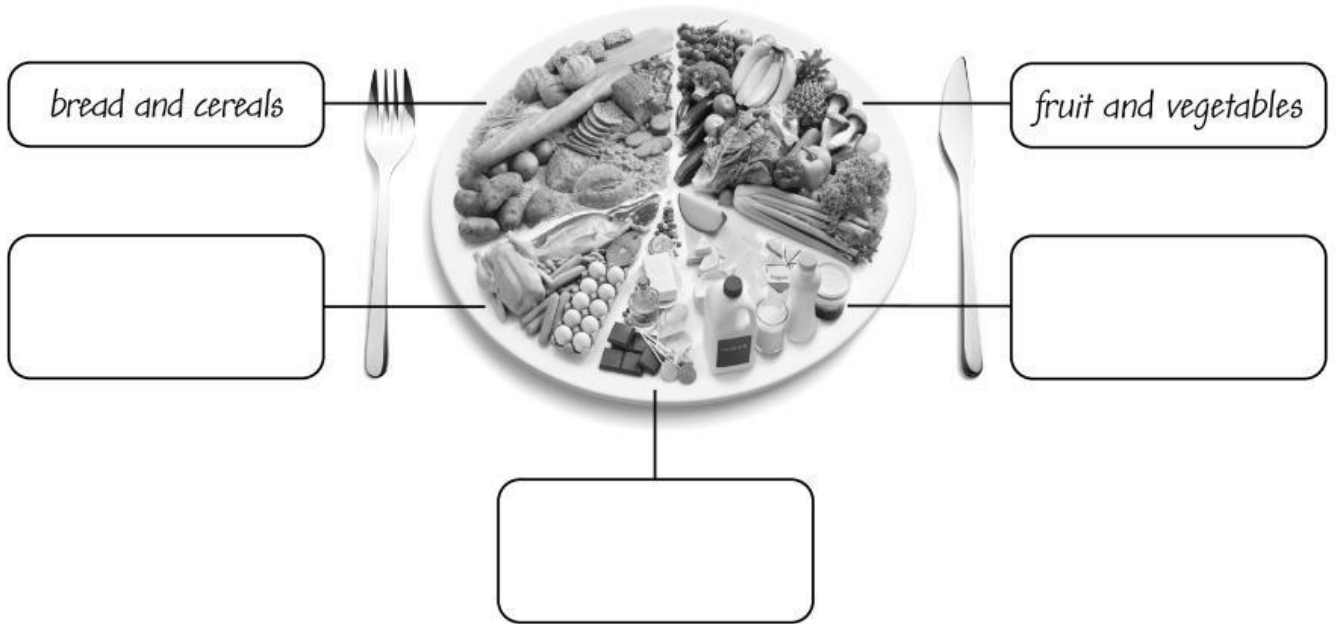
Gain weight

Stay the same

[1]



7 Look at the food on the plate. Two of the food types are labelled. Write in the other three labels in the correct boxes.



protein      milk and dairy      fats and sugars

[3]