

1-CHOOSE THE CORRECT ANSWER

1. Plants...
 - a) Are herbivores
 - b) Carry out photosynthesis
 - c) Are viviparous
2. Multicellular living things include...
 - a) Bacteria
 - b) Protozoa
 - c) Animals and plants
3. Plant cells have...
 - a) A rigid cell wall and chloroplasts
 - b) An irregular shape
 - c) An elastic wall
4. The levels of organisations are:
 - a) Cell, tissue, organ, system, organism
 - b) Cell, organ, tissue, system, organism
 - c) Cell, tissue, organ, organism, system
5. Fungi
 - a) Make their own food
 - b) Can move about
 - c) Are unicellular or multicellular

2-CIRCLE THE CORRECT WORD

- a) Living things need **energy / sunlight** to carry out movement.
- b) **Herbivores / Omnivores** eat both plants and other animals.
- c) **Plants / Carnivores** make their own food.
- d) Plants carry out **movement / photosynthesis** to make food.

3-COMplete the text about the process of sensitivity. Use these words.

sense organs - detect - plants - environment - respond - movement

Sensitivity is the process by which living things _____. and respond to changes in their _____.

Animals detect information through their _____ and they respond with _____. _____ cannot move about but they detect and _____ to changes.

4-MATCH

- | | |
|--|----------------------------|
| 1-Cells are.... | ...of more than one cell |
| 2-We can only see cells... | ...through a microscope |
| 3-Multicellular living things are made up... | ... of just one cell |
| 4-Unicellular living things are made up... | ...the basic units of life |

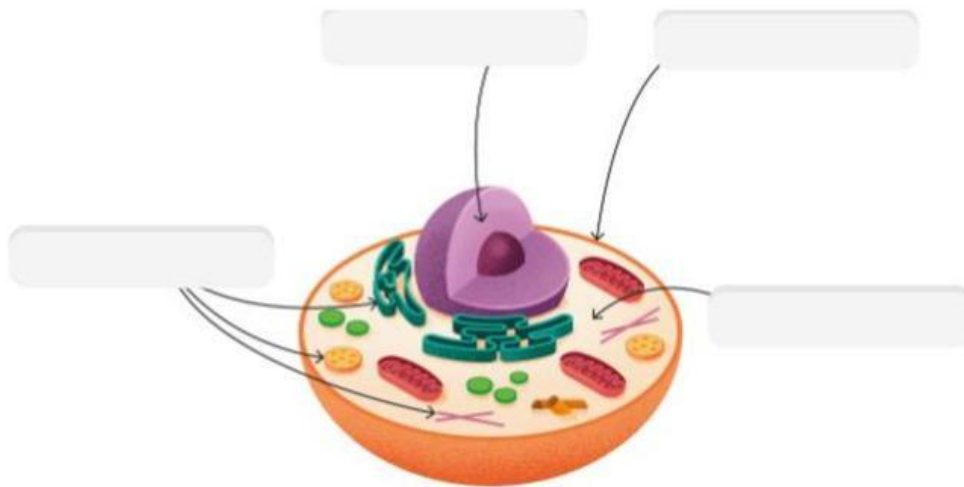
5- READ AND WRITE THE PART OF THE CELL

cytoplasm - nucleus - organelles - cell membrane

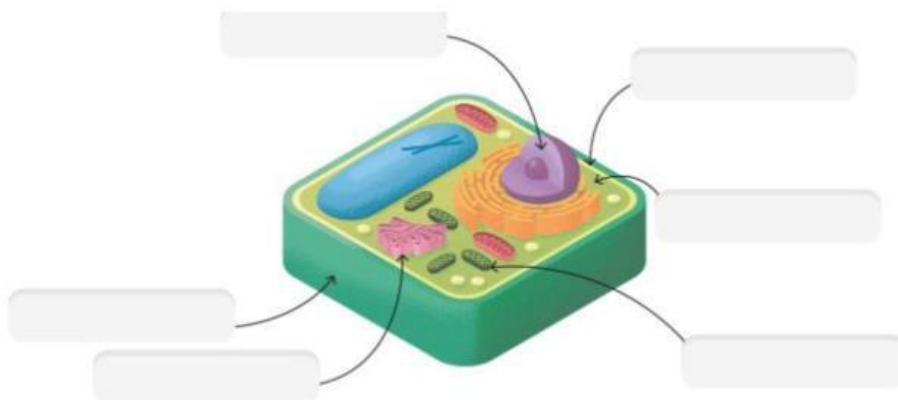
- a. Internal part which controls what happens in the cell. --> _____
- b. Liquid part between the nucleus and the membrane. --> _____
- c. Thin, permeable skin that separates the interior of the cell from the outside. --> _____
- d. They are situated in the cytoplasm. --> _____

6-WRITE THE PARTS

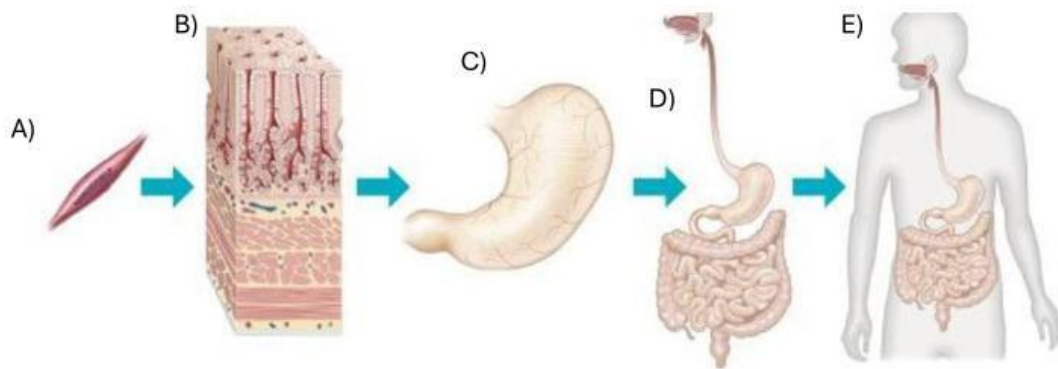
ANIMAL CELLS



PLANT CELLS



7-LABEL THE LEVELS OF ORGANISATIONS



A-

B-

C-

D-

E-

8-IDENTIFY THE 5 KINGDOMS

